

DUBAI DESIGN DISTRICT



 MERAAS



A LEADING MASTER DEVELOPER

From Bluewaters Residences to the BVLGARI Residences, Meraas creates exclusive, design-led, limited-edition homes in landmark locations, merging innovation with artistry to shape refined living experiences. Every project is defined by its unique setting where elegance, tranquillity, and community life flow together.



THE EPICENTRE OF DESIGN, FASHION AND ART

Home to a global collective of leading names in design, art, and fashion, Dubai Design District (d3) is a vibrant hub tailored to inspire bold ideas, drive innovation, and connect visionaries. Across beautifully crafted spaces and modern offices, it fosters collaboration and creativity, bringing together forward-thinking individuals.





A COMMUNITY WHERE CREATIVITY LIVES

Expanding the existing d3, the new masterplan introduces a fully-integrated mixed-use district that brings together creative enterprise, lifestyle living, culture, and nature in one cohesive urban environment.

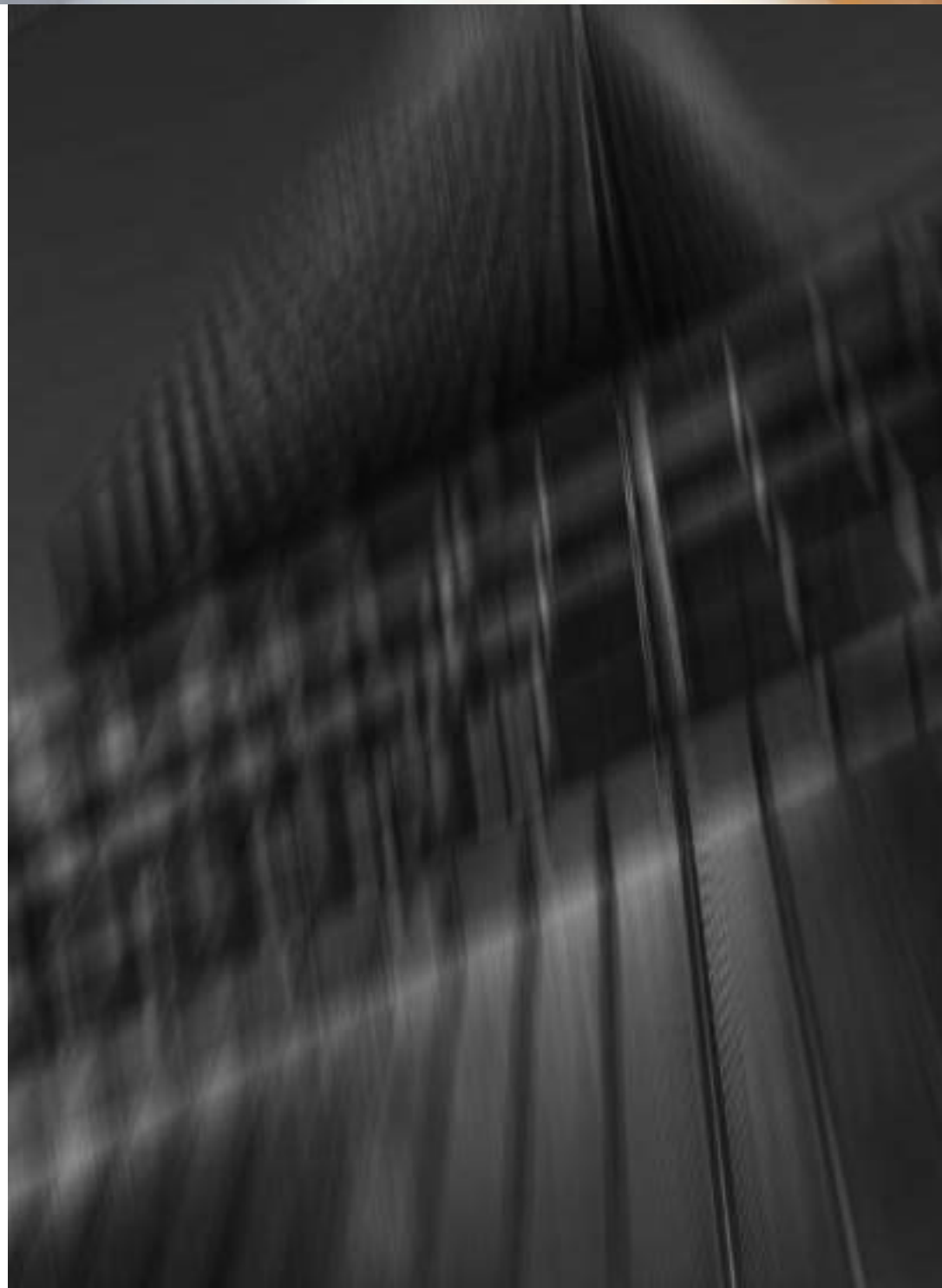
SEE DIFFERENTLY

The Dubai Design District masterplan is envisioned as the region's first and largest design-led district, built around creativity, community, and a highly curated public realm. Designed with human needs at its core, it fosters a thriving ecosystem for living, working, and cultural exchange in a visually striking, connected, and future-ready environment.

Spanning approximately 18 million sq. ft., the masterplan balances urban density with generous open spaces, waterfront experiences, and a strong emphasis on walkability and liveability.







A MASTERPIECE OF URBAN LIVING

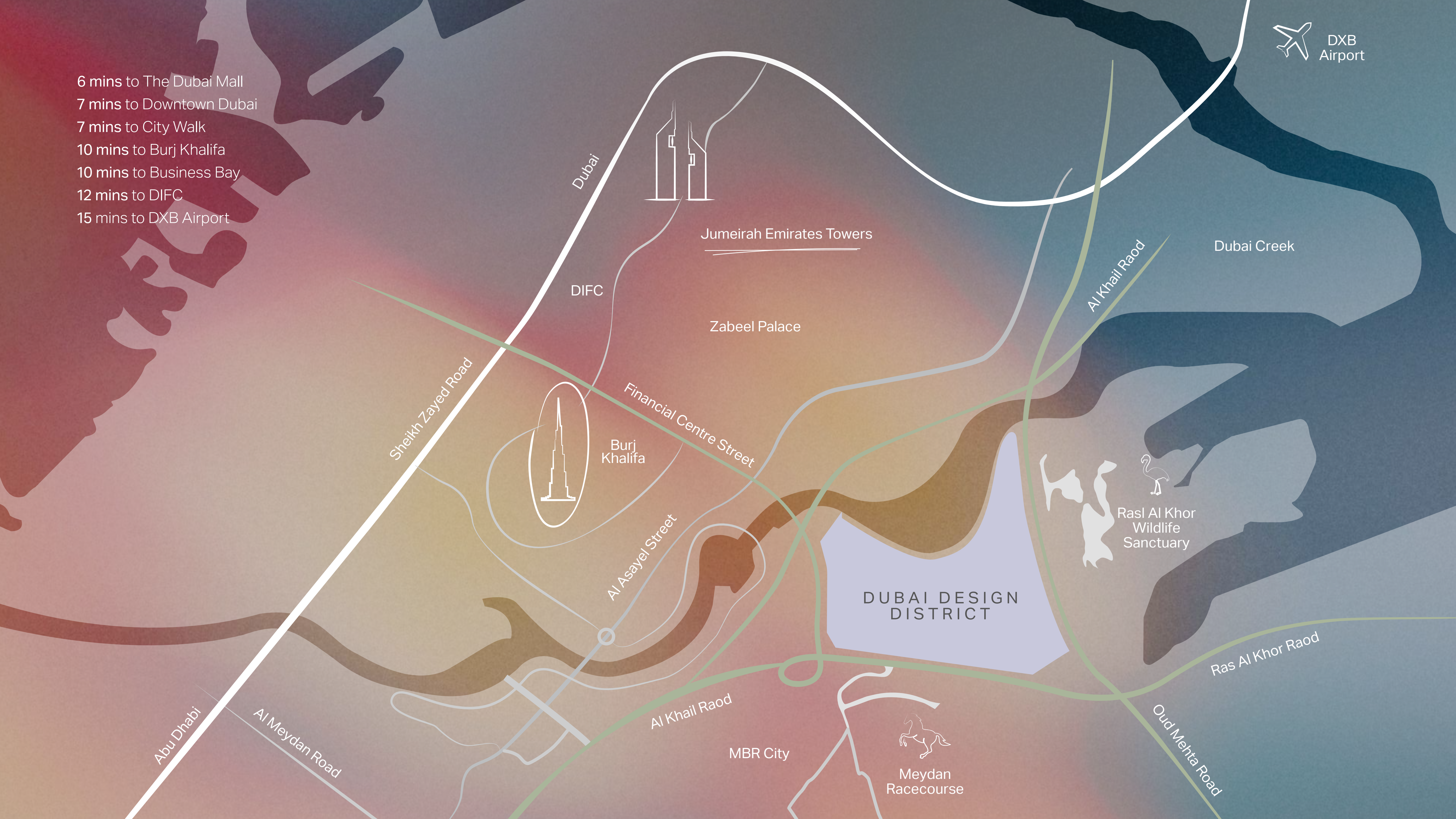
Strategically located near Dubai Creek and adjacent to Business Bay and Downtown Dubai, Dubai Design District sits at the crossroads of the city's past, present, and future. It connects residents to the heart of the city while offering unrivalled prestige and accessibility.

With a rich mix of living, working, and cultural spaces, it boasts stunning waterfront views, walkable streets, and curated experiences that transform the everyday into the spectacular. Designed as an urban oasis, it balances creative energy with openness, well-being, and a strong connection to nature.



DXB Airport

- 6 mins to The Dubai Mall
- 7 mins to Downtown Dubai
- 7 mins to City Walk
- 10 mins to Burj Khalifa
- 10 mins to Business Bay
- 12 mins to DIFC
- 15 mins to DXB Airport



Dubai



Jumeirah Emirates Towers

DIFC

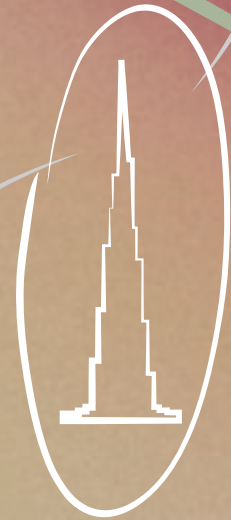
Zabeel Palace

Dubai Creek

Al Khail Raod

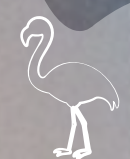
Sheikh Zayed Road

Financial Centre Street



Burj Khalifa

Ras Al Khor Wildlife Sanctuary



DUBAI DESIGN DISTRICT

Al Asayel Street

Ras Al Khor Raod

Abu Dhabi

Al Meydan Road

Al Khail Raod

MBR City



Meydan Racecourse

Oud Mehta Road



THE DESIGN LINE

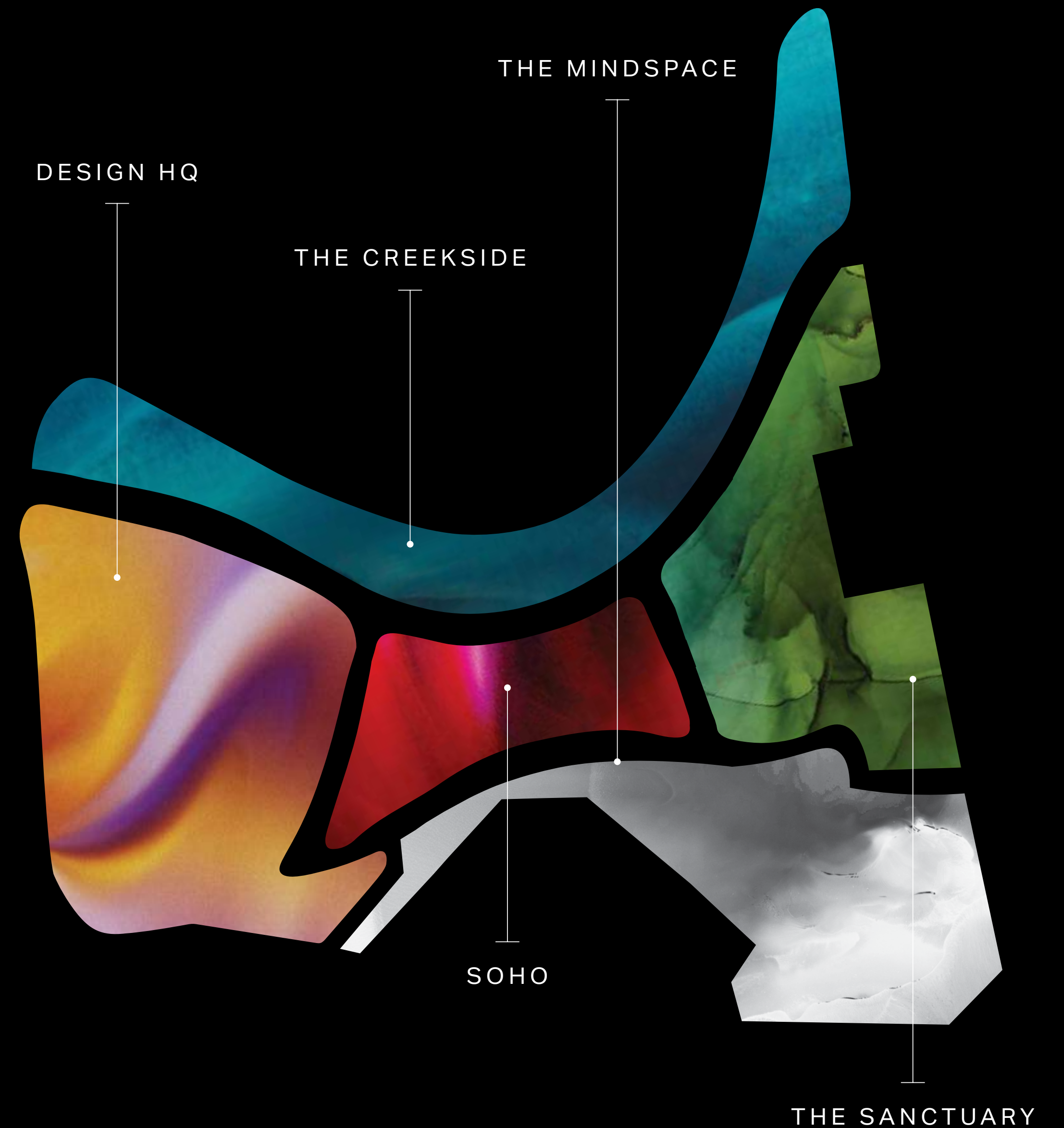
At the heart of Dubai Design District, the Design Line is the signature public-realm spine that forms the backbone of the masterplan. The first of its kind in Dubai, this six-kilometre pedestrian-first route connects the entire district through a continuous, car-free journey, offering a safe and scenic experience shaped by lush landscapes, inspiring architecture, and cultural expression.

Activated by public art, community events, and dedicated facilities, the Design Line functions both as a destination and a catalyst for economic vitality, bold design, and a thriving creative community. It connects the five distinct areas, each with its own lifestyle, rhythm, and urban character, while uniting them within one cohesive masterplan grounded in collaboration and sustainable living.

FIVE DISTINCTIVE AREAS

Dubai Design District's five unique areas offer exceptional places to live, work, and explore.

Combining residential, commercial, hospitality, and creative spaces, the masterplan creates a walkable lifestyle where premium waterfront homes and vibrant creative clusters are linked by promenades filled with art, culture, and curated experiences.



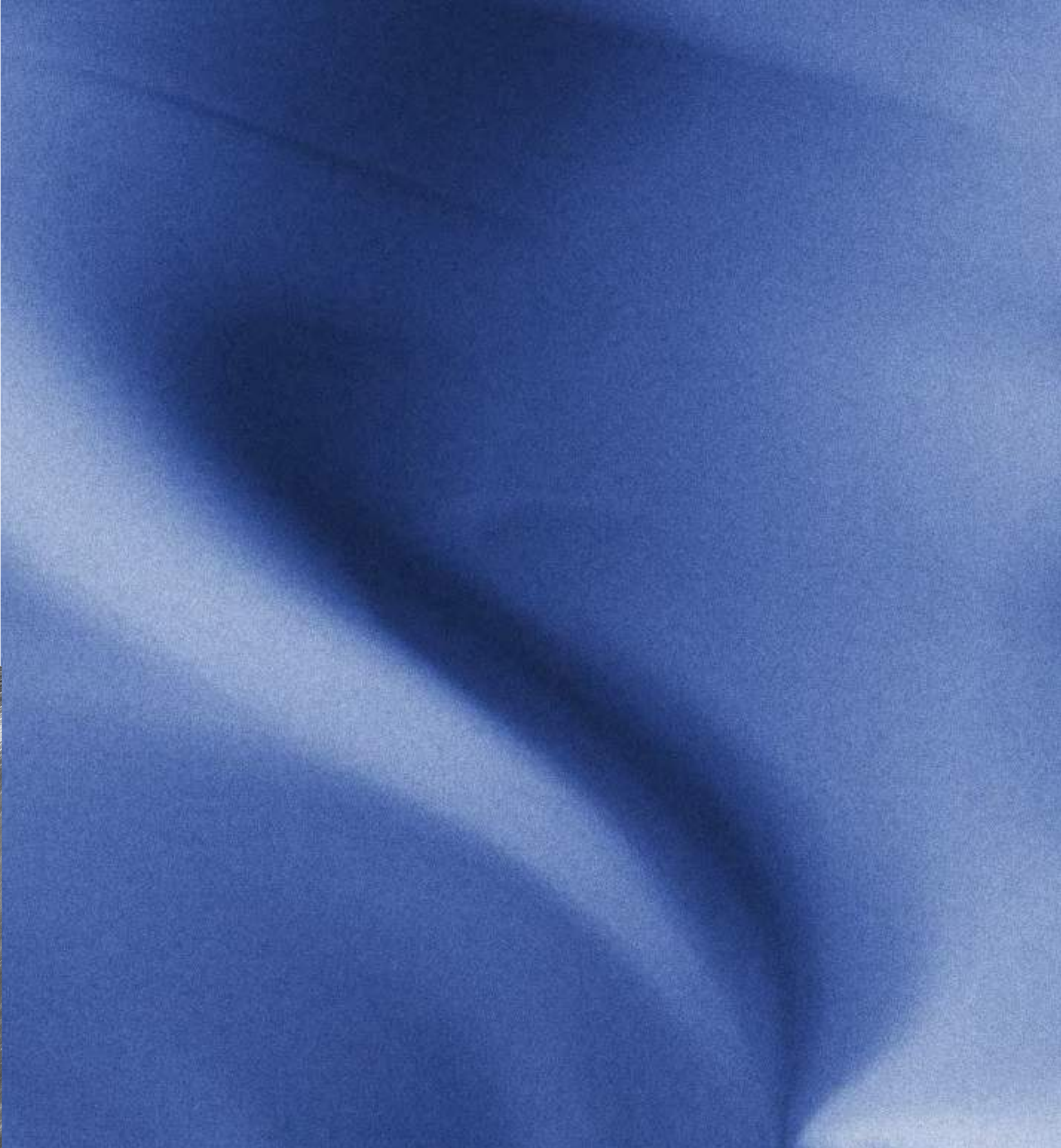
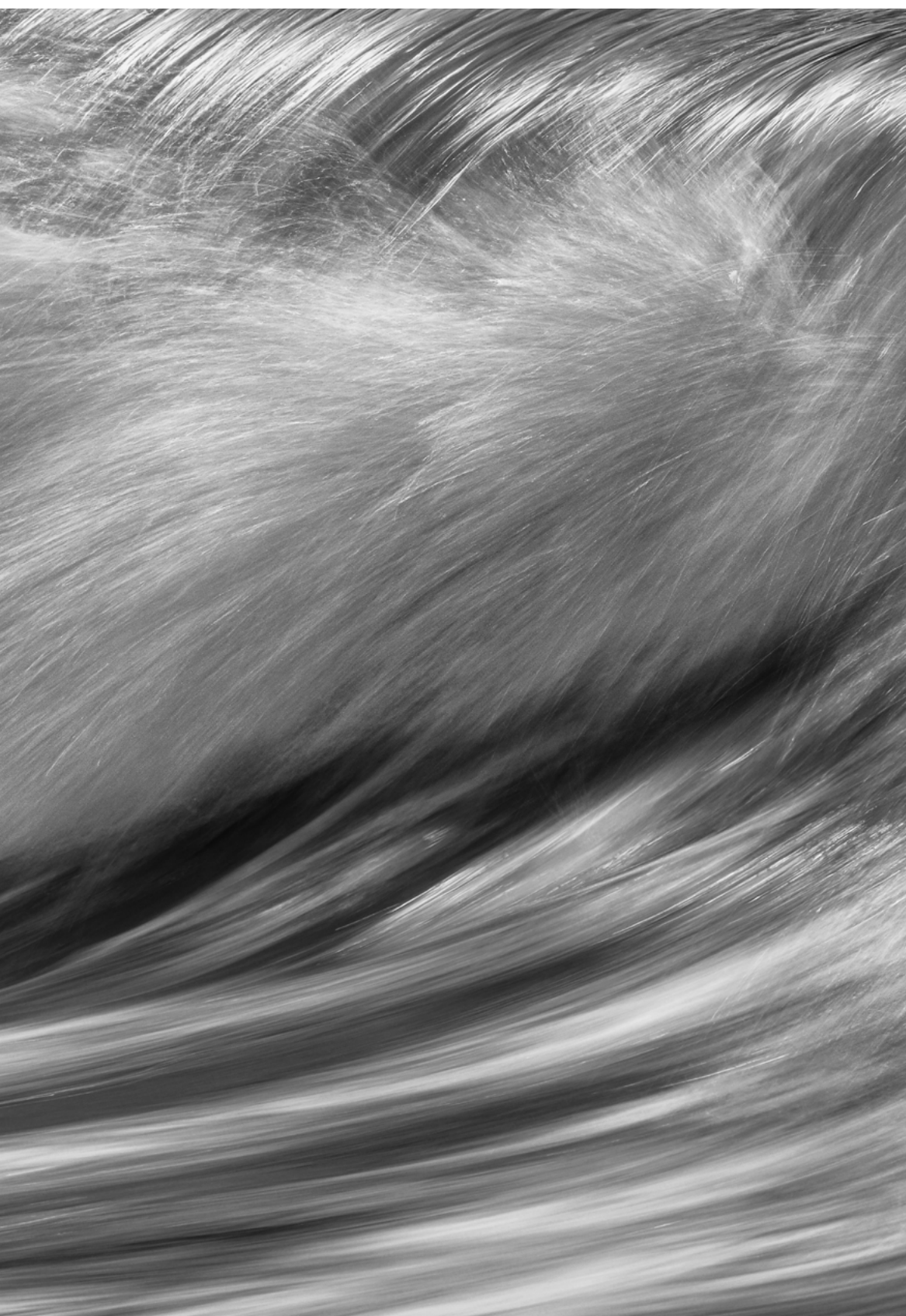
THE CREEKSIDE



The Creekside is defined by elegance,
shaped by water, and alive with possibility.

Along its picturesque edge lies a wealth
of exclusive waterfront residences, each
offering a rare blend of privacy, prestige,
and proximity to the beating heart of
Dubai Design District.





AT ITS CORE

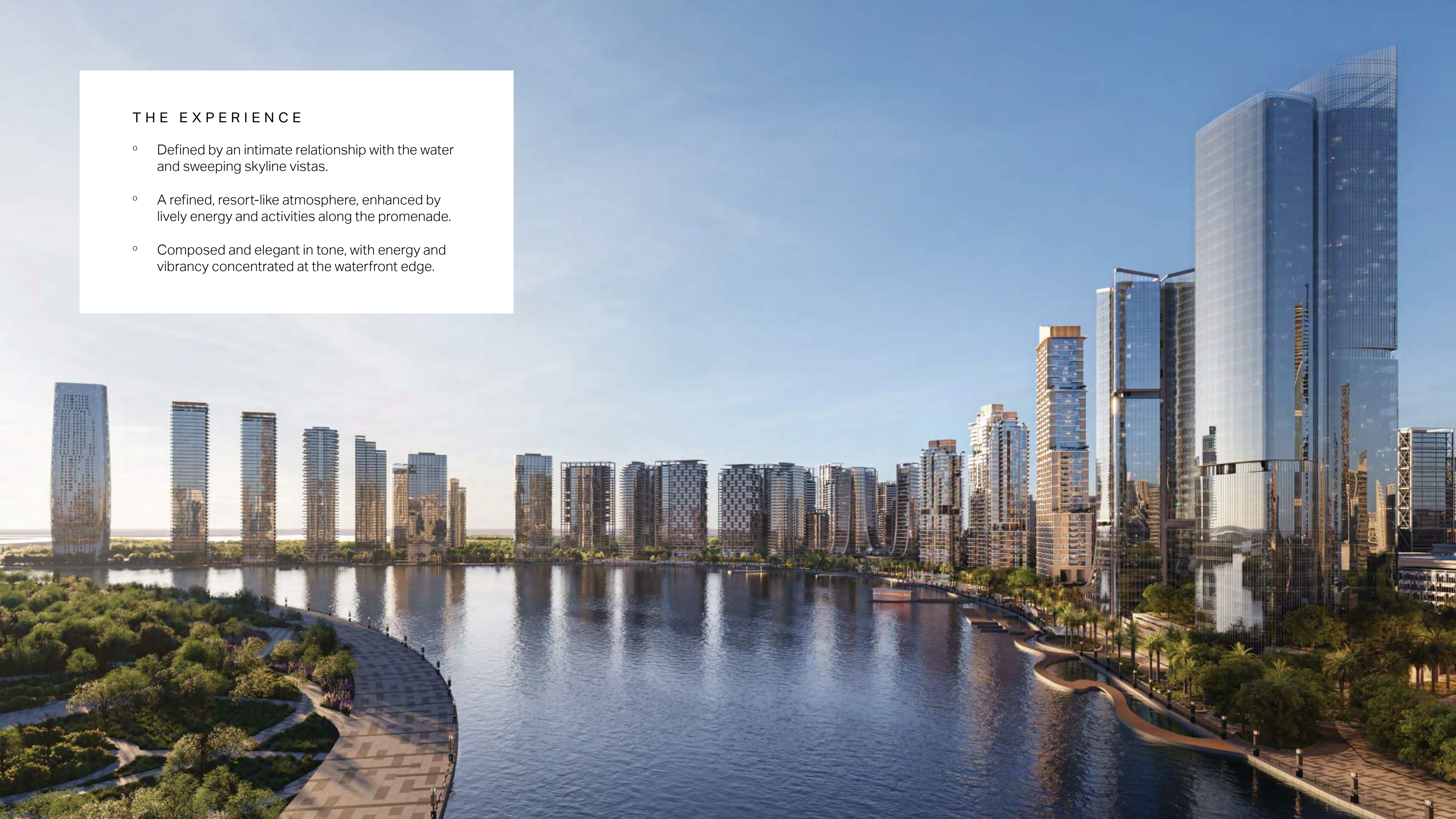
Flagship waterfront, premier residential address of Dubai Design District.

DESIGNED FOR

Those seeking true luxury waterfront living, panoramic views, lifestyle-led value, and a highly curated sense of place.

THE EXPERIENCE

- Defined by an intimate relationship with the water and sweeping skyline vistas.
- A refined, resort-like atmosphere, enhanced by lively energy and activities along the promenade.
- Composed and elegant in tone, with energy and vibrancy concentrated at the waterfront edge.





25-50 M WIDE ACTIVATED WATERFRONT PROMENADE



WHAT SETS IT APART

- Seamless connection to Dubai Creek and the ease of future marine mobility.
- A limited collection of waterfront homes that offers a greater sense of privacy, exclusivity, and calm.
- Carefully positioned residences designed to capture sunset and skyline views, and the tranquility of the surrounding mangroves.

RESIDENTIAL
50%

OPEN SPACE
34%

OFFICES
9%

HOSPITALITY
7%

A M E N I T I E S



URBAN INLAND BEACH



BOARDWALK



DESIGN LINE CASCADE



MARINA



CENTRAL PROMENADE



FITNESS AREAS



PLAY AREAS

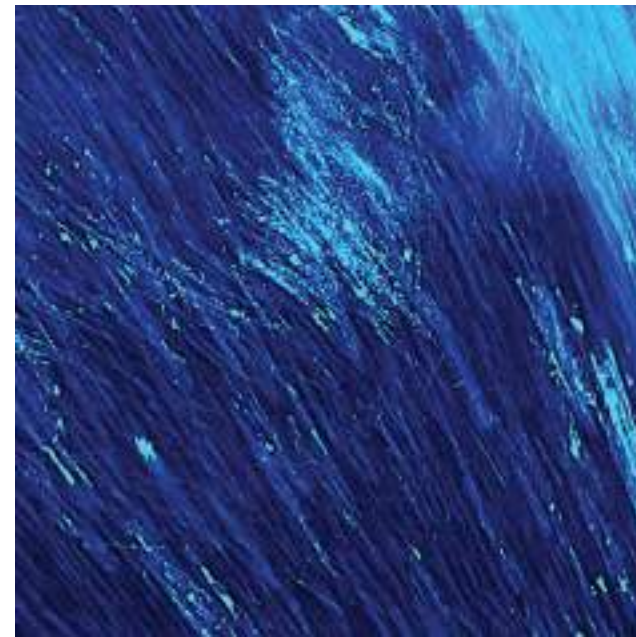


AMPHITHEATRE

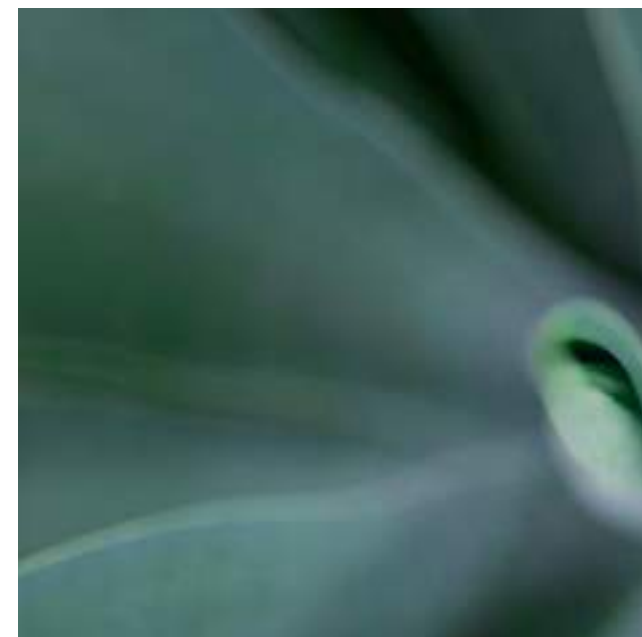


JETTY LOOK-OUT

AMENITIES



SPLASH PAD



GARDEN SIKKA



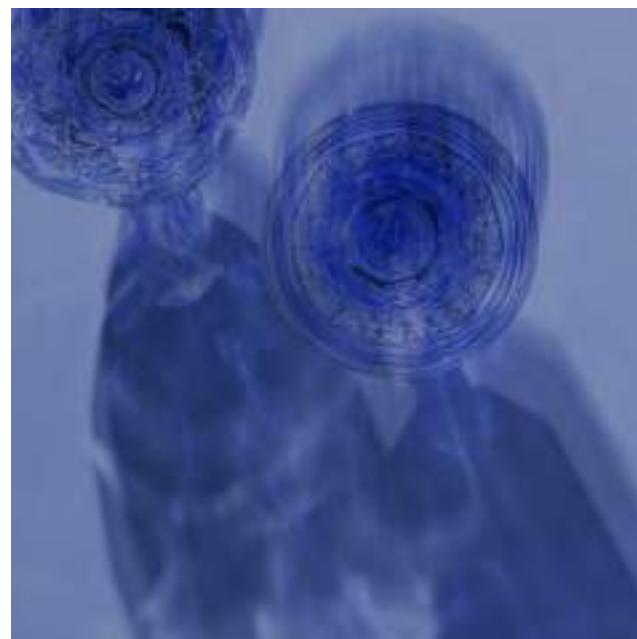
SPORTS CLUB



MARINE FERRY STATION



PROMENADE
ENTRANCE PLAZA



F&B



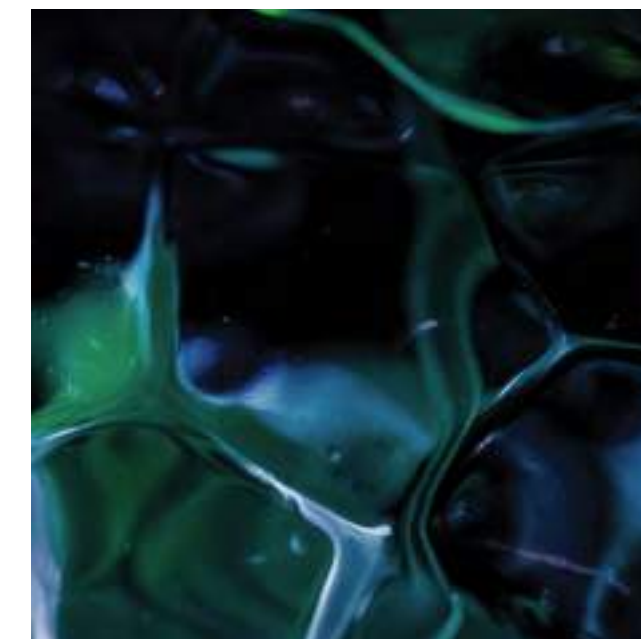
CURATED LANDSCAPES



WATER FEATURE
PROJECTIONS

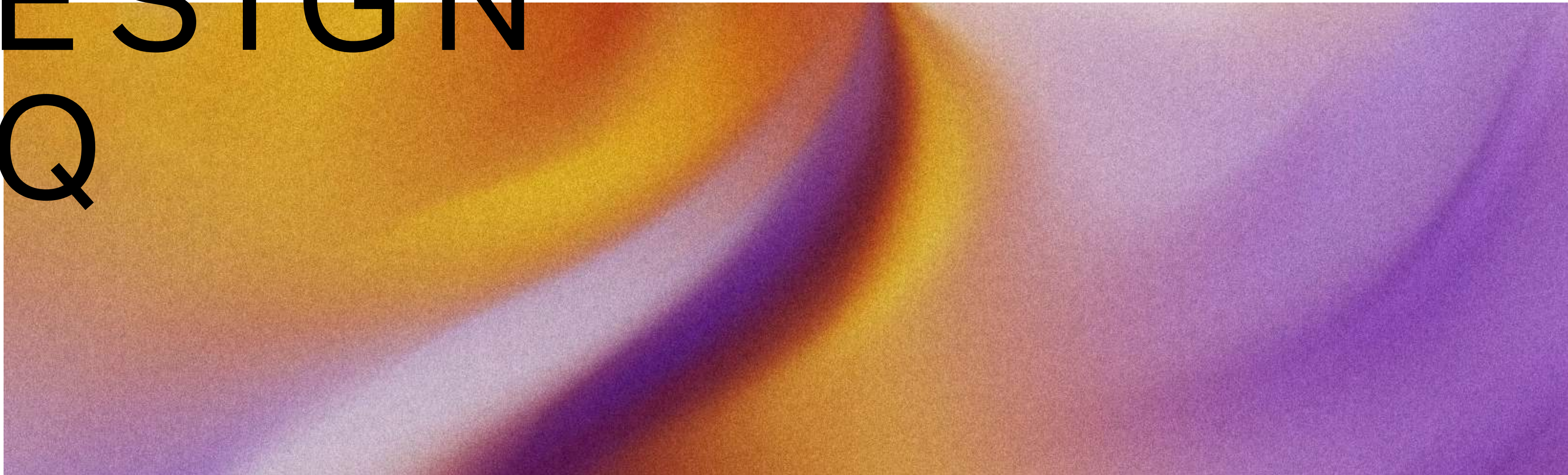


FOOD TRUCKS



ACTIVITY LAWNS

DESIGN
HQ



OFFICES
50%

RESIDENTIAL
32%

OPEN SPACE
10%

FACILITIES
8%

Design HQ builds on the spirit of the original d3, evolving it into a design-forward urban centre where fashion, art, and creativity shape both work and daily life.

AT ITS CORE

The creative anchor of the masterplan, building on the legacy of the original d3 and shaping a design-led urban neighbourhood.

DESIGNED FOR

Design studios, fashion houses, creative offices, and residents drawn to an energetic district where culture, work, and daily life naturally connect.





THE EXPERIENCE

- Energetic and urban, with a creative edge shaped by fashion, art, and design.
- Lively streets shaped by cafés, retail, and welcoming social spaces.
- A natural evolution of the original d3 identity, building on its established creative spirit.

WHAT SETS IT APART

- The most concentrated creative cluster within the district, home to studios, ateliers, and design-led workplaces.
- An area where creativity drives daily life, supporting a thriving mix of culture, commerce, and community.
- Defined by a dynamic rhythm of making, connection, and inspiration throughout the day.



A M E N I T I E S



SCULPTURE PARK



SCULPTURAL LAWNS



TREE-LINED LANDSCAPES



URBAN FITNESS STATION



ART & SCULPTURAL
FEATURES



POCKET ACTIVITY AREA



INTEGRATED SEATING

AMENITIES



F&B



CENTRAL
WATER FEATURE



MOSQUE PLAZA



LANDSCAPE PLANTERS



DESIGN LINE CASCADE



HOTEL PLAZA

S O H O





SOHO is the social heart of Dubai Design District, a lively urban neighbourhood where culture, entertainment, and everyday life come together in a setting defined by energy, creativity, and movement.

AT ITS CORE

Social and cultural heart of the masterplan.

DESIGNED FOR

Residents, creatives, and visitors drawn to an active urban atmosphere where culture, social life, and everyday experiences naturally intersect.



THE EXPERIENCE

- Lively and urban, yet intimate in scale, with a welcoming, people-focused atmosphere.
- Shaped by active laneways, cafés, dining spots, and cultural venues that invite discovery.
- Alive from day to night, with a steady rhythm of movement, social interaction, and street



WHAT SETS IT APART

- Home to the district's key cultural and entertainment destinations.
- A vibrant meeting point of living, dining, retail, and public space.
- The most urban expression of the masterplan, defined by its energy, density of experiences, and sense of place.



A M E N I T I E S



SIGNATURE URBAN PLAZA



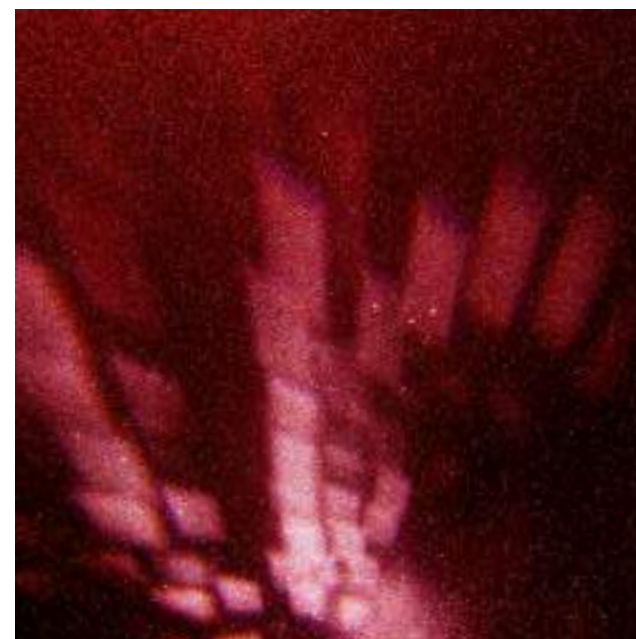
INTERACTIVE ART & SCULPTURE



POCKET ACTIVITY SPACES



DESIGN LINE STEPS



DESIGN LINE-PODIUM CONNECTION



ACTIVATED PEDESTRIAN STREET



AMPHITHEATRE & STAGE

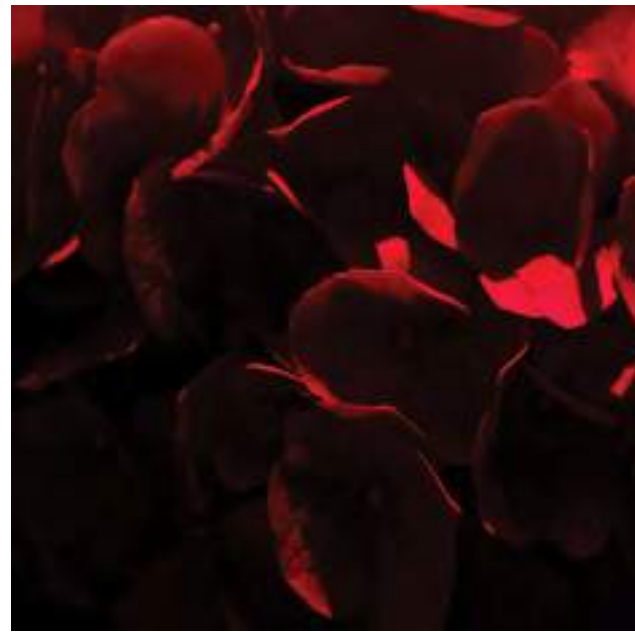


CASCADING LANDSCAPES

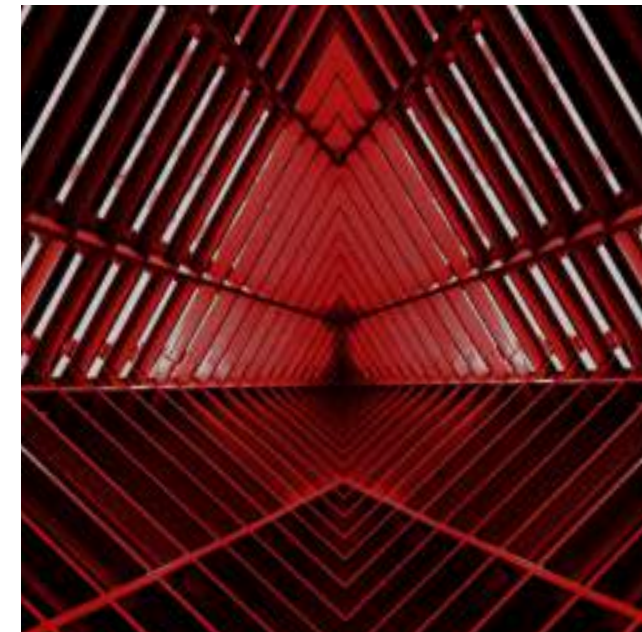


WATER WALL FEATURE

AMENITIES



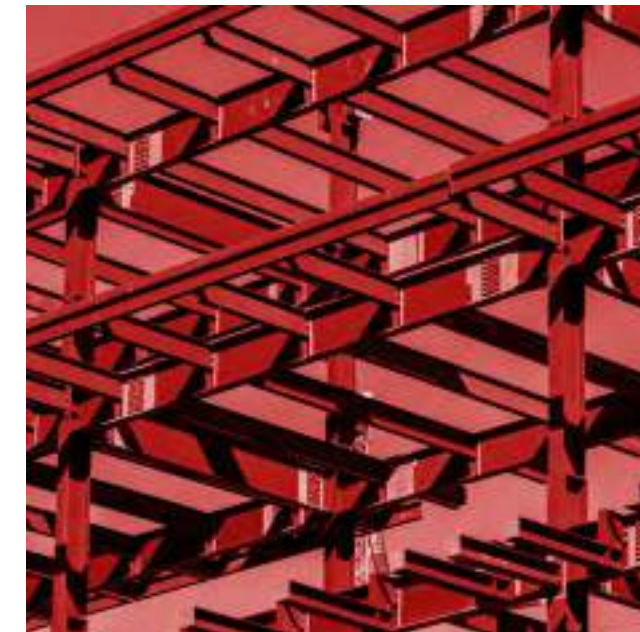
MULTI-USE CENTRAL LAWN



MULTI-USE PAVILION



STEPPED SEATING



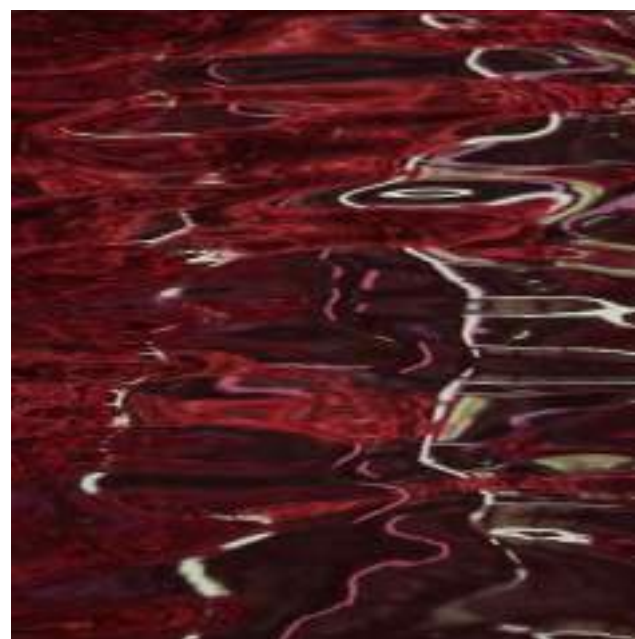
RETAIL PAVILIONS



SCULPTED LAWNS



F&B



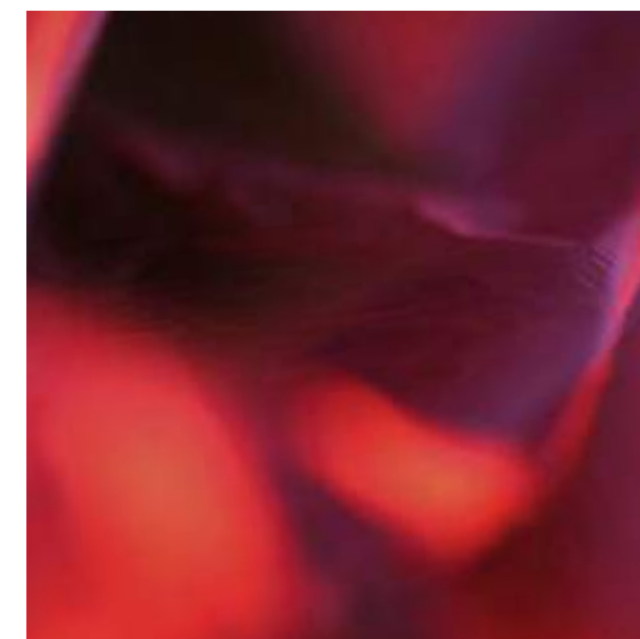
INTERACTIVE PLAY
FEATURES



TREE-LINED LANDSCAPES



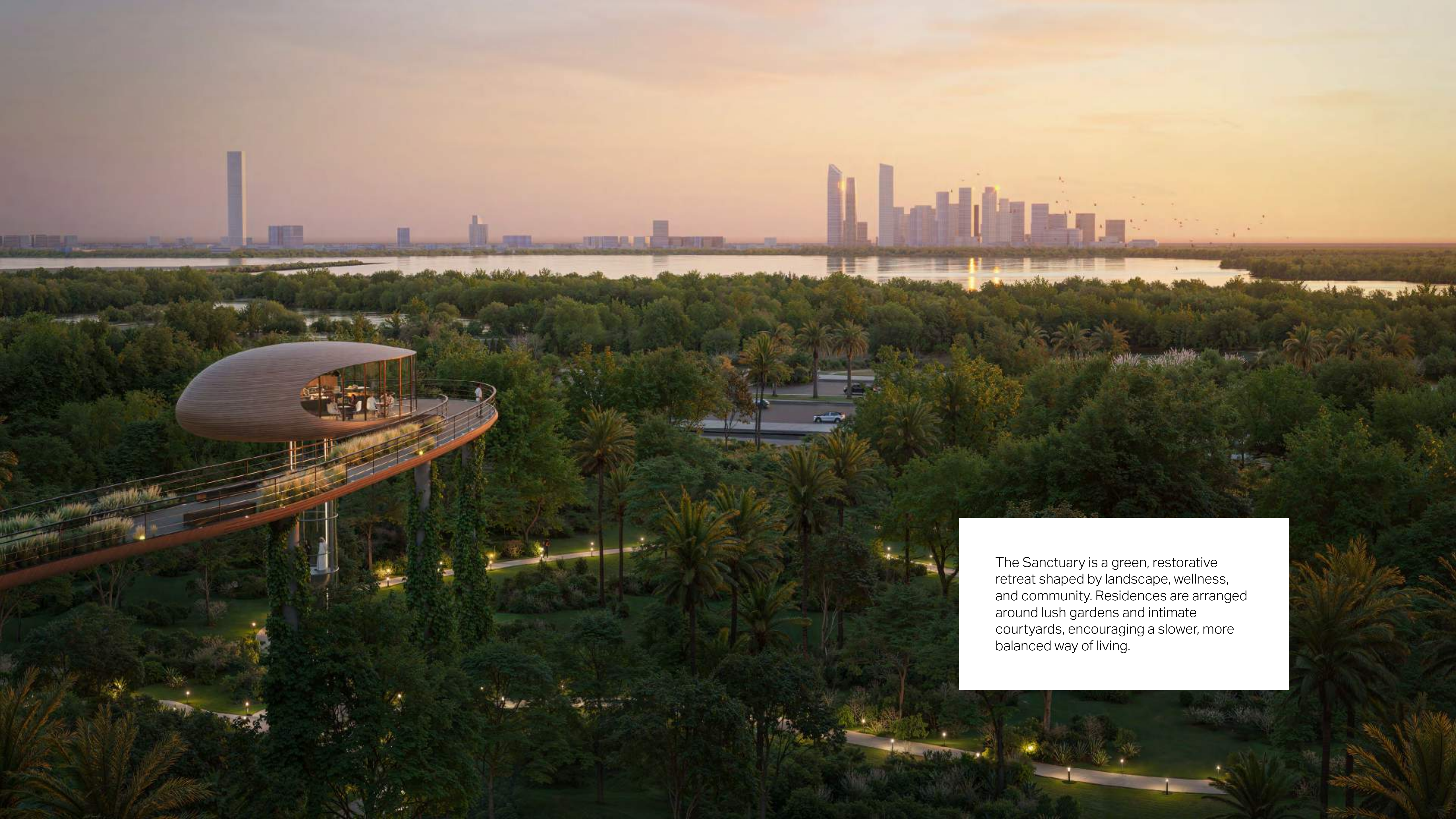
LEARNING PODS



DESIGN LINE LOOK-OUT
PAVILION

THE SANCTUARY





The Sanctuary is a green, restorative retreat shaped by landscape, wellness, and community. Residences are arranged around lush gardens and intimate courtyards, encouraging a slower, more balanced way of living.



THE EXPERIENCE

- Peaceful and green, with a deeply restorative atmosphere.
- Shaped by generous landscapes, open spaces, and a slower, more mindful rhythm of movement.
- Centred around shared parks, play areas, and sports facilities that support an active, family-focused lifestyle.

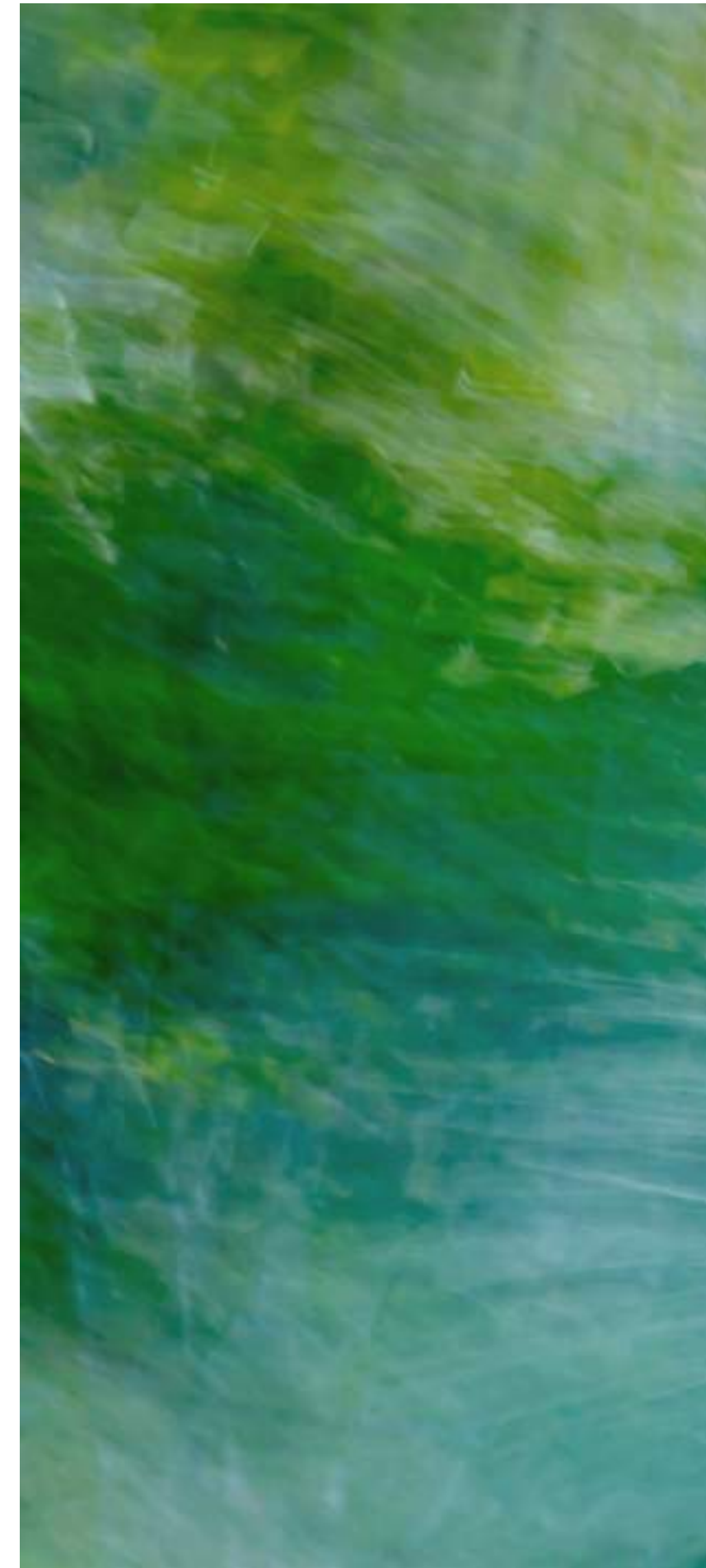
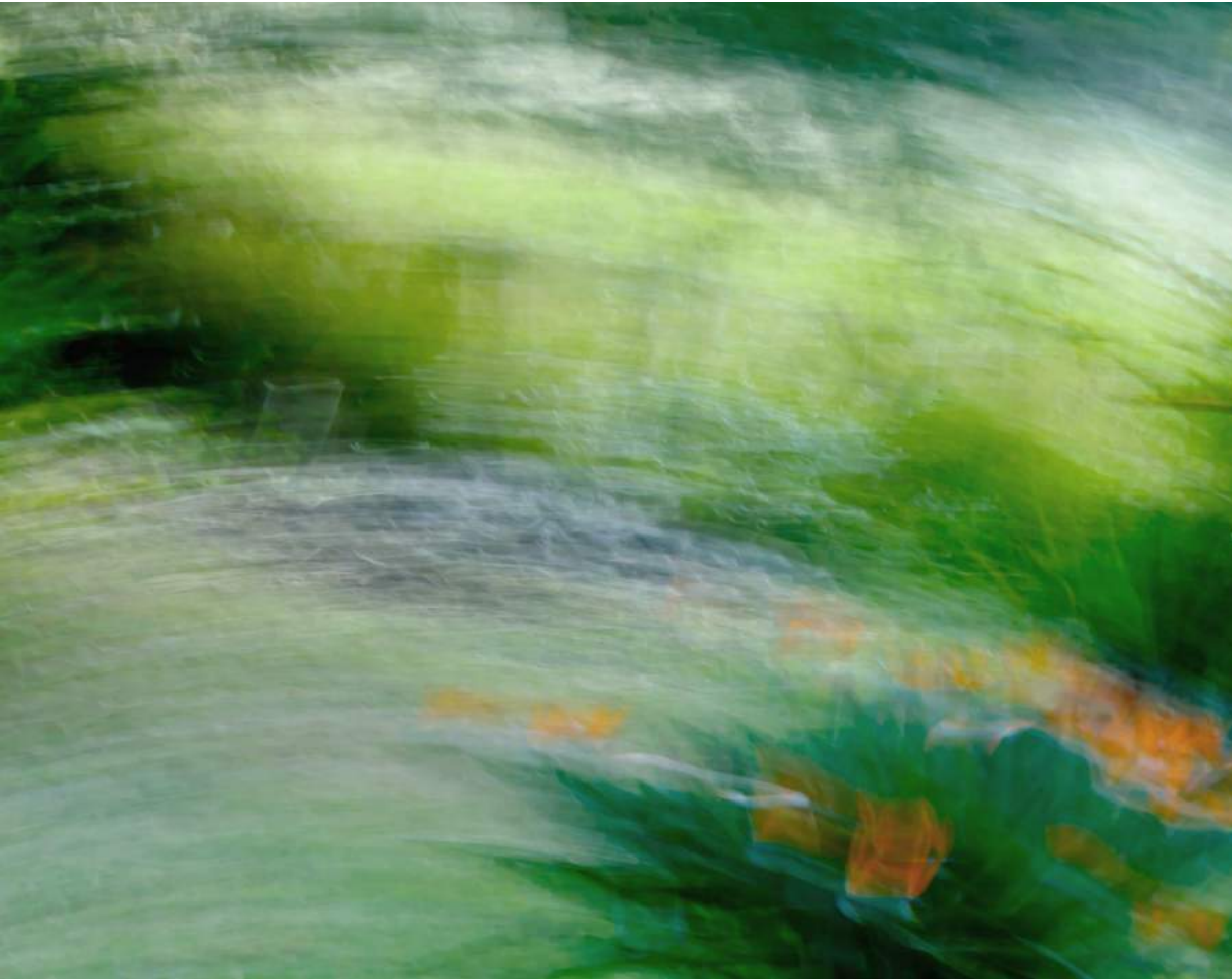
AT ITS CORE

Wellness, family- and nature-led residential area.

DESIGNED FOR

Residents seeking a calmer pace of living, with a strong connection to greenery, outdoor space, and community.





WHAT SETS IT APART

- Open views across the Ras Al Khor Wildlife Sanctuary.
- A strong focus on outdoor living, well-being, and family-oriented activity.
- A tranquil contrast to the livelier energy of Soho and Design HQ, offering a more peaceful way of living.

RESIDENTIAL
78%

OPEN SPACE
17%

FACILITIES
5%

A M E N I T I E S



MULTI-PURPOSE COURT



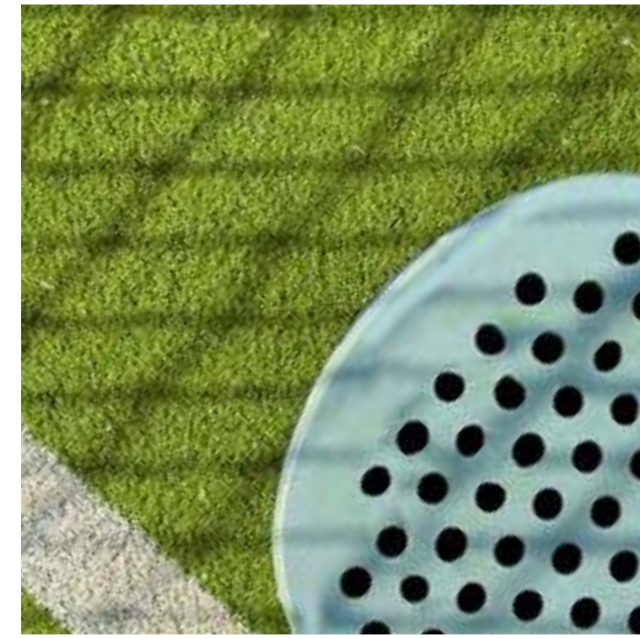
ADVENTURE PARK & PLAY AREAS



TABLE TENNIS COURT



ACTIVITY & SPORTS LAWN



PADDLE TENNIS COURT



URBAN FITNESS & SKATE PARK



INTEGRATED SEATING & RECREATION AREAS



MOSQUE PLAZA WITH WATER FEATURE



MOSQUE GARDENS & OPEN LAWN

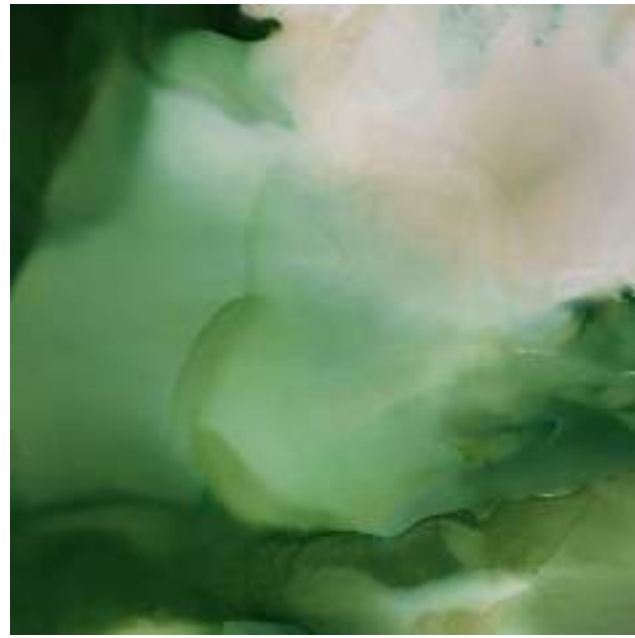


PUBLIC ART & SCULPTURAL WATER FEATURE

AMENITIES



ICONIC RETAIL PAVILION



PUMP TRACK LOOP



WETLAND & NATURE-
THEMED PLAY



STEPPED SEATING &
GALLERY SPACES



LOOK-OUT TOWER &
VIEWING PODS



F&B



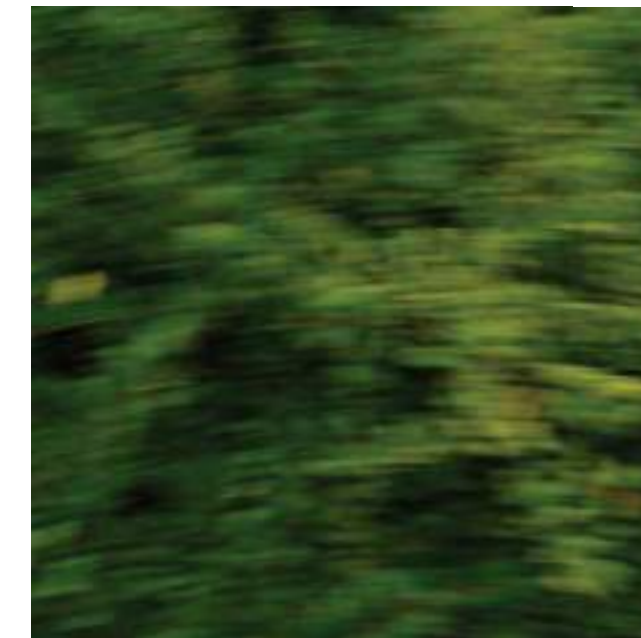
NATURE TRAIL & NATURAL
LANDSCAPES



CANOPY WALK / DESIGN LINE
WALKWAY



WATER-SENSITIVE
LANDSCAPE DESIGN



ACTIVATED UNDERCROFT
PLAY FEATURE

THE MINDSPACE





The Mindspace offers an environment shaped for those who thrive on curiosity, creation, and collaboration.

AT ITS CORE

A district dedicated to creative production, experimentation, and learning.

DESIGNED FOR

Artists, designers, makers, educators, and innovators drawn to an environment that encourages exploration and creative exchange.

THE EXPERIENCE

- Raw and flexible, with a strong sense of creative freedom.
- Purpose-built for making, prototyping, and hands-on experimentation, with art installations and exhibition spaces woven into everyday life.
- Celebrates process, craft, and originality.



FACILITIES
32%

INDUSTRIAL
31%

OFFICES
24%

UTILITIES
7%

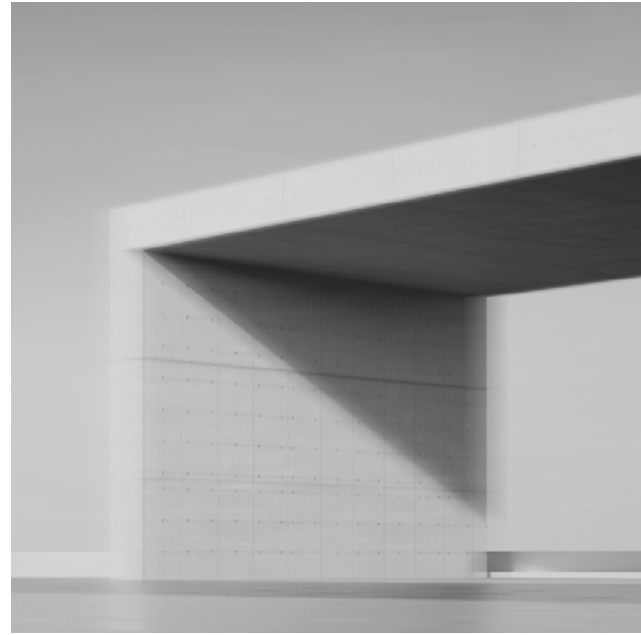
OPEN SPACE
6%



WHAT SETS IT APART

- Large-format, highly adaptable spaces.
- A focus on process, creation, and collaboration.
- Functions as Dubai Design District's ideas hub, continually feeding new thinking and creative energy into the wider district.

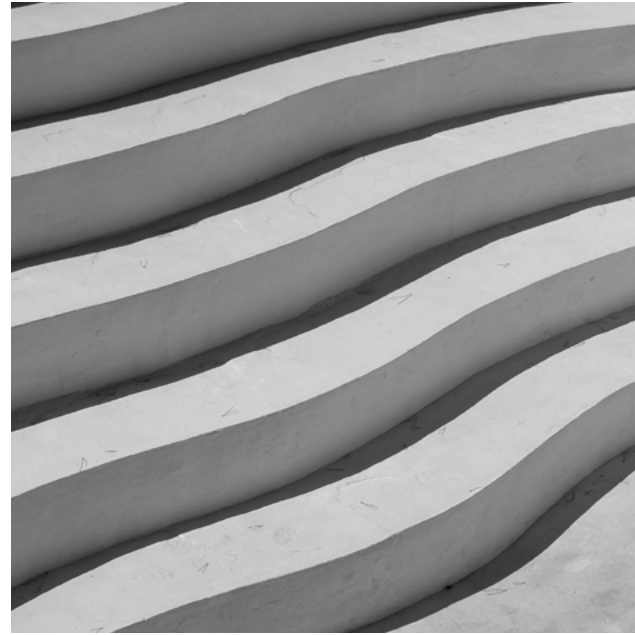
A M E N I T I E S



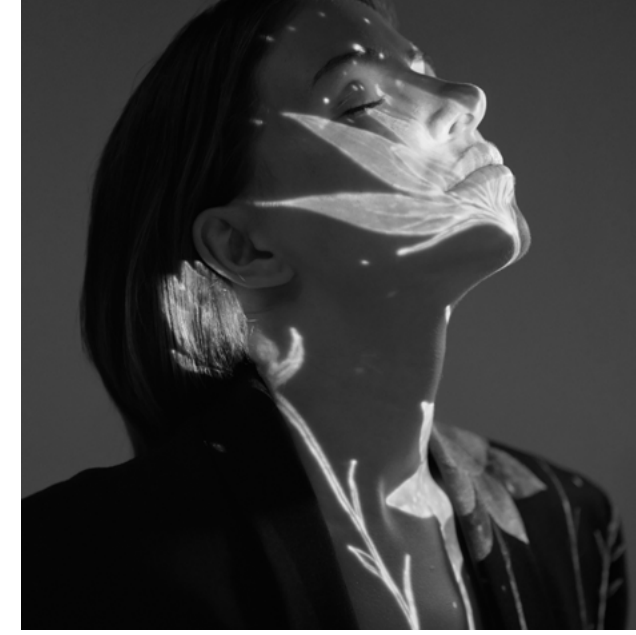
MULTI-USE PAVILION



OPEN LAWN
FOR SEASONAL EVENTS



DESIGN LINE STEPPED
SEATING



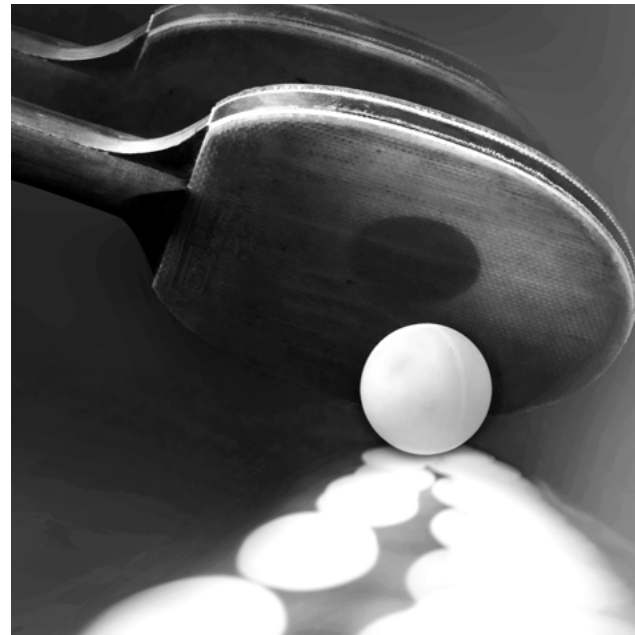
OUTDOOR EXHIBITION
SPACES



INTERACTIVE ART &
SCULPTURE



BASKETBALL & SKATE
PARKS



POCKET ACTIVITY ZONES



F&B



INTEGRATED SEATING &
CO-WORKING SPACES



FEATURE ART & SCULPTURE

BEYOND A

LIFESTYLE

DESTINATION

LIFE, INSPIRED

Life at Dubai Design District unfolds against a backdrop of water, skyline, and light. Promenades with panoramic canal views, vibrant retail, and marina life shape the rhythm of everyday living, where movement, well-being, and connection feel effortless.

From morning through late night, galleries, performance spaces, and urban hangouts are brought to life by a year-round calendar of food festivals, design weeks, fashion shows, art fairs, boat and water shows, concerts, and flagship events.

Everyday essentials are thoughtfully woven into the district, with schools, nurseries and daycare facilities, mosques, clinics, hospitals, hotels, and retail all within easy reach.

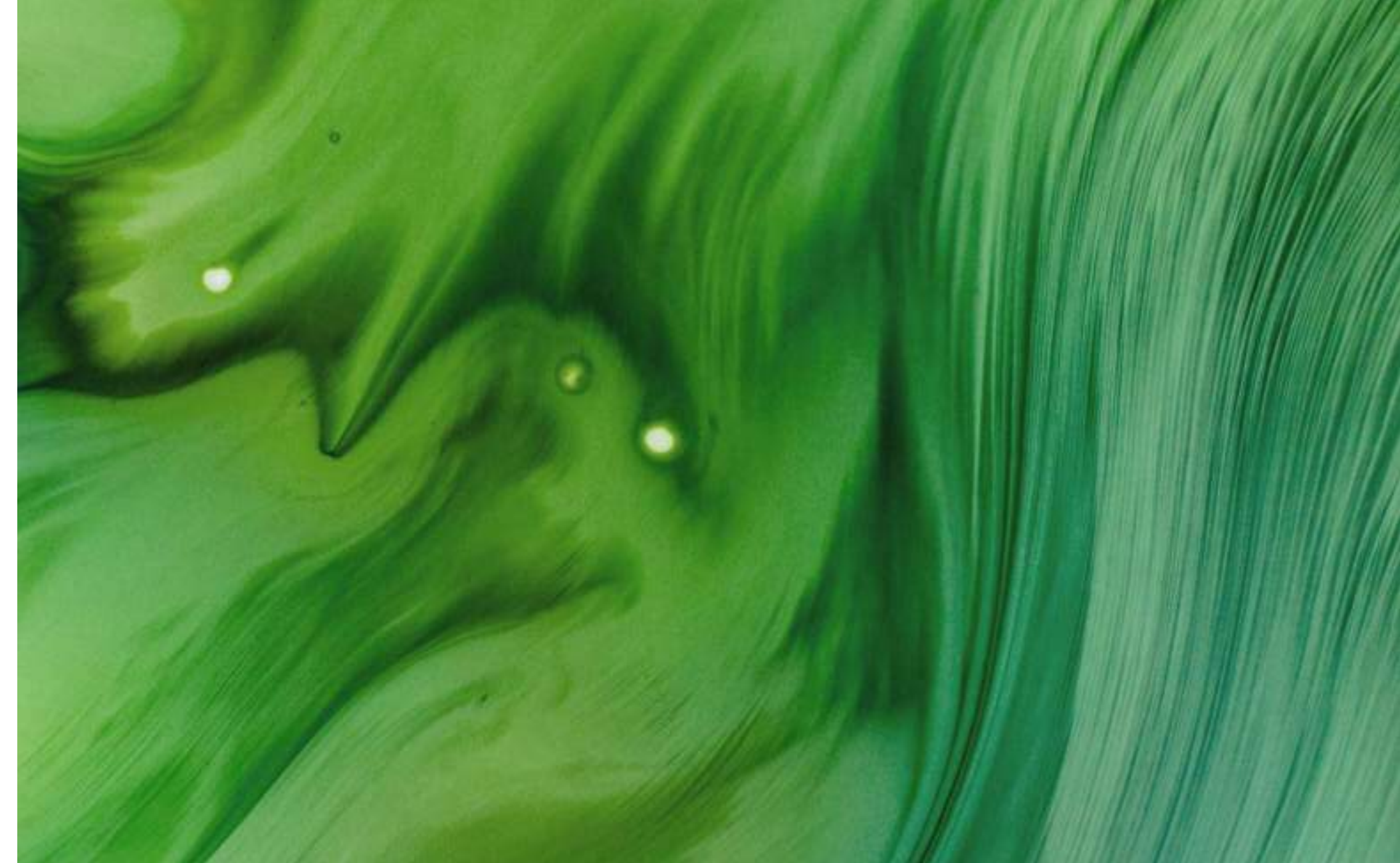
This is an ever-evolving waterfront community where culture, style, and daily life come together for an experience unlike anywhere else in the city.





WHERE INNOVATION MEETS SUSTAINABILITY

Dubai Design District is grounded in forward-thinking design, with sustainability at its core. Energy efficiency, sustainable materials, and generous open spaces work in harmony with innovative urban design strategies to create a future-focused, human-centred environment that balances modern development with environmental and social responsibility.





WHERE DESIGN GUIDES YOUR EVERY MOVE

THE EDIT AT d3

UNSCRIPTED. BY DESIGN.

More than a residence, The Edit at d3 is a refined expression of waterfront living, where innovative architecture meets a thriving creative community. Composed of three sculptural towers, the design is defined by rhythm, balance, and a seamless connection to water and landscape. Soft edges, continuous balcony lines, and sky gardens introduce light, greenery, and openness throughout, creating a living environment where architecture, nature, and everyday life flow together.





ATÉLIS ^{AT} d3

AN ARTISTIC REFLECTION OF LIFE

Rising along The Creekside shoreline, Atélis at d3 is the waterfront landmark in the heart of Dubai's creative district. Designed by the visionary studio SOM, this architectural masterpiece offers uninterrupted water views and panoramic skyline vistas. It delivers signature experiences on every level, blending resort-style serenity with the energy and creativity of urban living.



DESIGN QUARTER ^{AT} d3

LIVE IT CREATIVE

At the heart of Dubai Design District, Design Quarter at d3 is a distinctive residential address created for those with a creative spirit. Offering thoughtfully designed apartments, it pairs sweeping city views and contemporary amenities with stylish lobbies and quiet spaces for everyday reflection.

A black and white, high-contrast photograph of a woman's face and shoulders in profile, looking towards the left. She is wearing a white, textured knit sweater and a circular earring. The lighting is dramatic, highlighting her features against a dark background.

WELCOME
TO A LIFE,
DESIGNED

