



---

# Hillside Residences

An idyllic community experience in the heart of the city.

Welcome to one of the most sought after and aesthetically planned communities in Dubai. Presenting Hillside Residences, a new freehold development that comes with every urbane amenity you could think of and a lot more.

Here, you'll find thoughtfully designed residences that offer comfort and style, while being surrounded by lush greenery and picturesque landscapes. Enjoy the peace and quiet of Hillside Residences, knowing that the vibrant amenities and cultural attractions of Wasl Gate are right in your neighbourhood.





---

# The finest amenities

For an unmatched  
urban living experience.

An all-encompassing community first and foremost, Hillside Residences packs in everything you could ask for - a massive terrace and barbecue areas, well-designed walkways, multiple gyms and swimming pools, and children's play areas for that complete community experience. The sprawling Central Park, located in the neighbourhood, can be easily accessed by the residents of Hillside Residences.

# Hillside Master Plan



**Hill 1**  
Wayfinding Gardens

**Hill 2**  
Central Community

**Hill 3**  
Sports & Wellness

Master Plan Render



Wasl Gate

Hillside Residences

# H1 - Podium Annotation

## Key Amenities

- |    |                        |    |                          |
|----|------------------------|----|--------------------------|
| 1  | Steps & Terrace Garden | 11 | Community Lawn           |
| 2  | Entance Courtyard      | 12 | Pavilion                 |
| 3  | Pool Pavilion          | 13 | BBQ Area                 |
| 4  | Shower                 | 14 | Social Counter           |
| 5  | Yoga Deck              | 15 | Stairway to Ground Floor |
| 6  | Shade Pool Deck        | 16 | Shade Courtyard          |
| 7  | Horizon Pool           | 17 | Table Tennis Court       |
| 8  | Sunken Seating Area    | 18 | Kids Play Area           |
| 9  | Kids Pool              | 19 | Bench                    |
| 10 | Social Garden          | 20 | Balcony                  |
|    |                        | 21 | Bridge to Hill 02        |

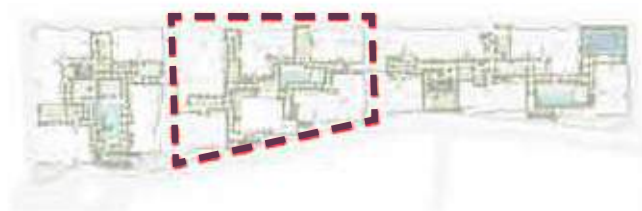




# H2 - Podium Annotation

## Key Amenities

- |    |                          |    |                    |
|----|--------------------------|----|--------------------|
| 1  | Steps & Terrace Garden   | 11 | Kids Play Area     |
| 2  | Entance Courtyard        | 12 | Shaded Courtyard   |
| 3  | Bridge to Hill 01        | 13 | Horizon & Lap Pool |
| 4  | Pavilion                 | 14 | Kids Pool          |
| 5  | Community Lawn           | 15 | Pool Deck          |
| 6  | Social Courtyard         | 16 | Table Tennis Court |
| 7  | Sculpture                | 17 | Balcony            |
| 8  | Stairway to Ground Floor | 18 | Bridge to Hill 03  |
| 9  | BBQ Area                 |    |                    |
| 10 | Outdoor Fitness Area     |    |                    |





# H3 - Podium Annotation



## Key Amenities

- |   |                          |    |                  |    |                  |    |                    |
|---|--------------------------|----|------------------|----|------------------|----|--------------------|
| 1 | Bridge to Hill 02        | 6  | Community Lawn   | 11 | BBQ Area         | 16 | Horizon & Lap Pool |
| 2 | Entrance Courtyard       | 7  | Pavilion         | 12 | Kids Play Area   | 17 | Kids Pool          |
| 3 | Social Courtyard         | 8  | Chess Board      | 13 | Outdoor Fitness  | 18 | Basketball Court   |
| 4 | Stairway to Ground Floor | 9  | Organic Garden   | 14 | Entrance Terrace | 19 | Climbing Wall      |
| 5 | Timber Deck              | 10 | Shaede Courtyard | 15 | Pool Deck        | 20 | Balcony            |





---

## Transport yourself to an urbane world.

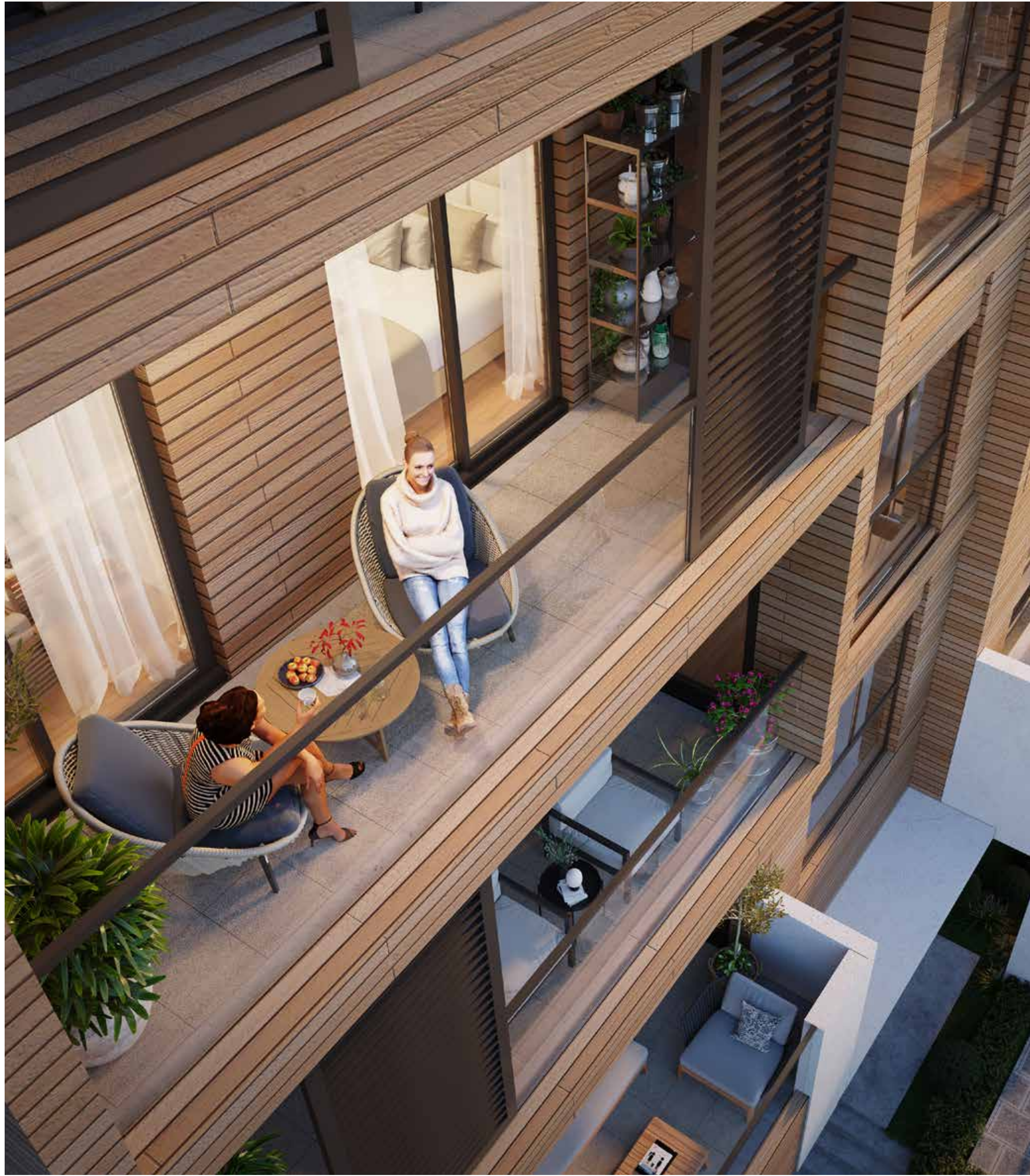
The first thing that strikes you when you enter the Hillside Residences community is the elegantly designed low-rise residence buildings nestled in the serene green spaces. And this urbane elegance is evident in the thoughtfully planned and aesthetically built common areas that feature all amenities.

Plaza



Wasl Gate

Hillside Residences



Wasl Gate



Retail

Hillside Residences

Pool



Wasl Gate

Hillside Residences

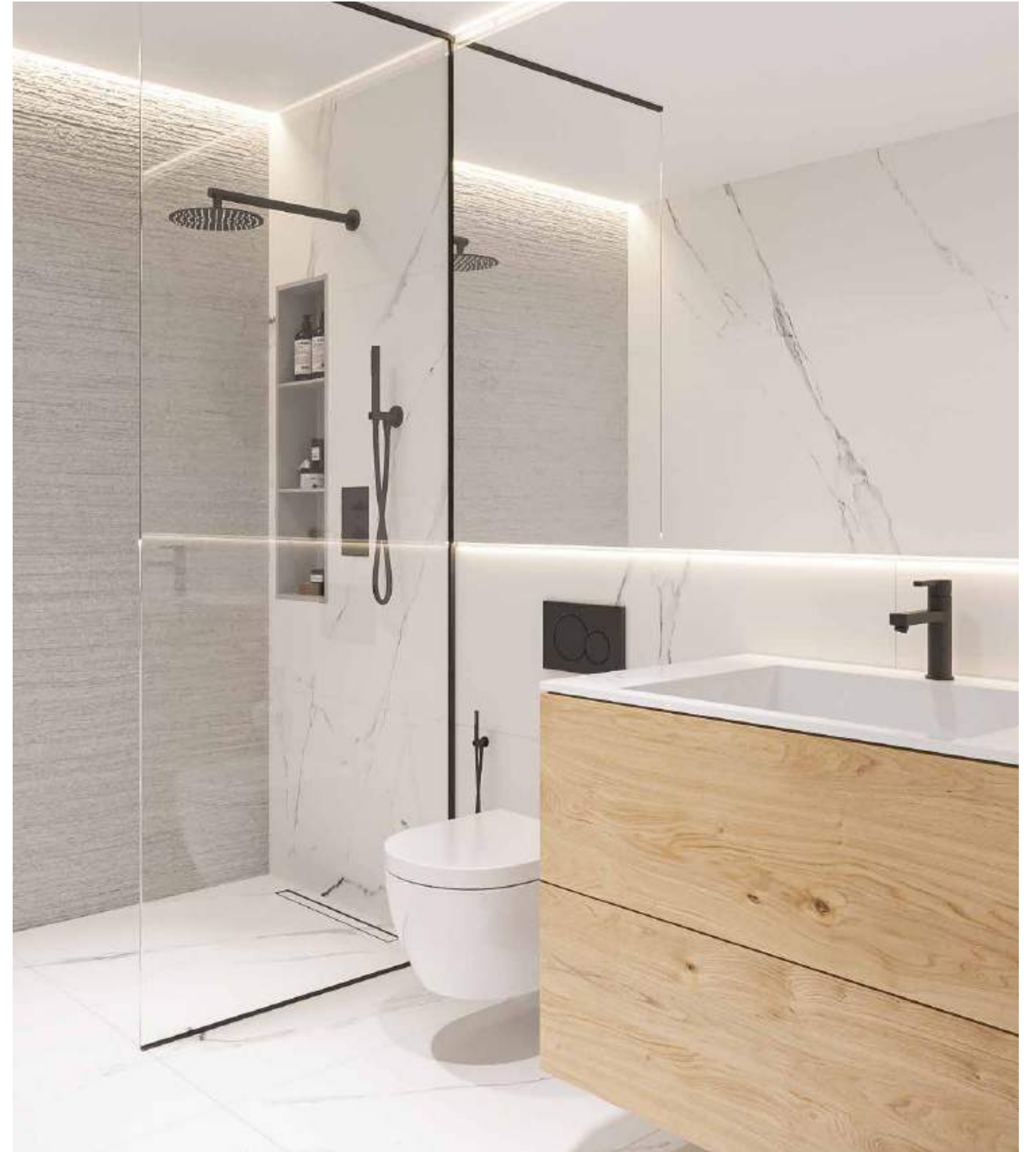
---

# Built around you and your lifestyle.

Every home unit at Hillside Residences is designed to encompass the life and lifestyle of a discerning homeowner. Available in 1/3-bedroom units, 2-bedroom duplexes, 3-bedroom duplexes, penthouses and 4-bedroom sky villas, these contemporary homes offer airy, generous living spaces and bring an aesthetic mix of layouts to the property.



Bathroom



Master Bedroom



Lobby

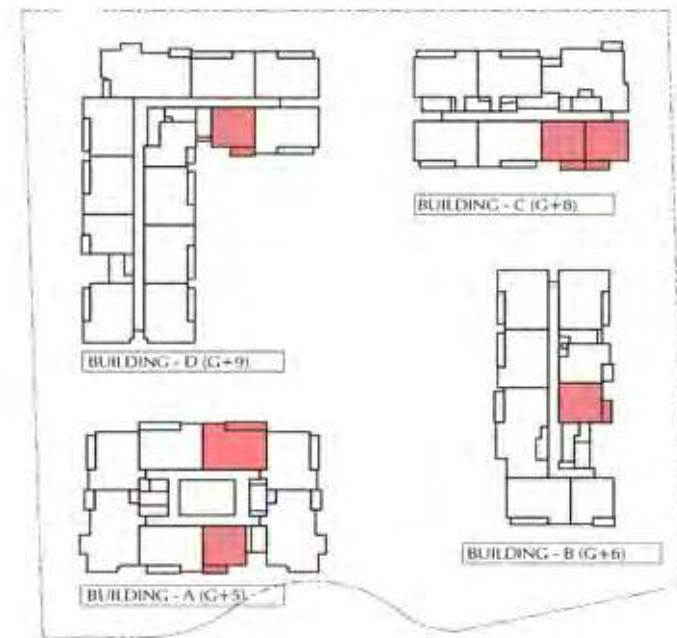


Wast Gate

Hillside Residences



# H1 Unit Layout - 1 Bedroom Type A

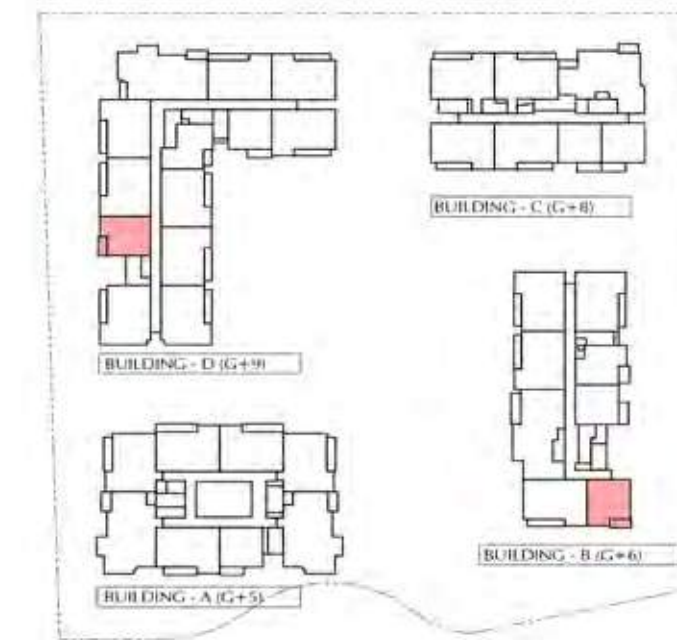


KEY PLAN:

1-Bedroom Apartment - Type A		
	SQ Ft	SQ M
Apartment Area	695.35	64.6
Terrace Area	123.35	11.46
Total Area	818.7	76.06

Building	Level
A	1, 3, 4, 5
B	1, 2, 3, 4
C	3, 4, 5, 6
D	1

# H1 Unit Layout - 1 Bedroom Type B

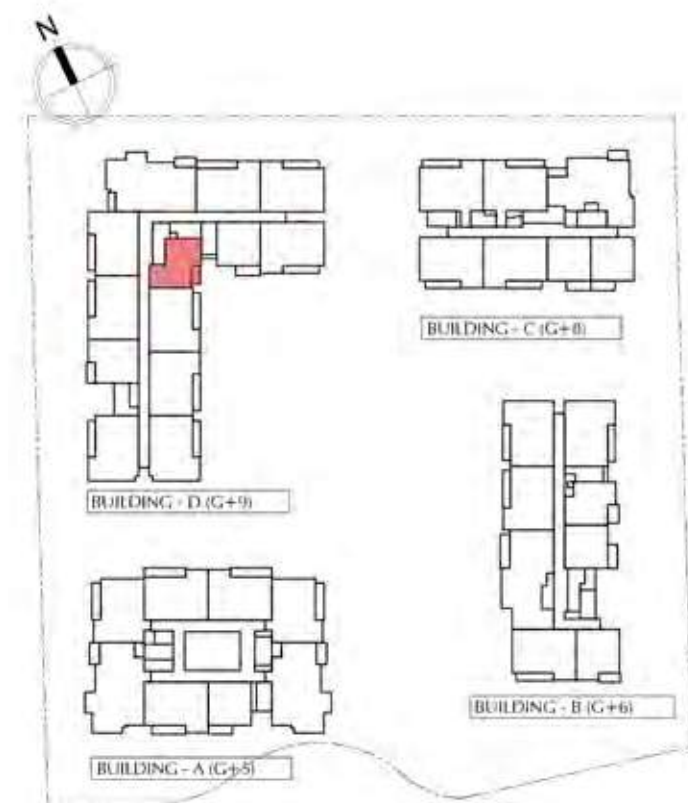


KEY PLAN:

1-Bedroom Apartment - Type B		
	SQ Ft	SQ M
Apartment Area	736.57	68.43
Terrace Area	126.37	11.74
Total Area	862.94	80.17

Building	Level
B	1, 2, 3, 4, 5, 6
D	1, 2, 3, 4, 5, 6, 7, 8, 9

## H1 Unit Layout – 1-Bedroom Type C

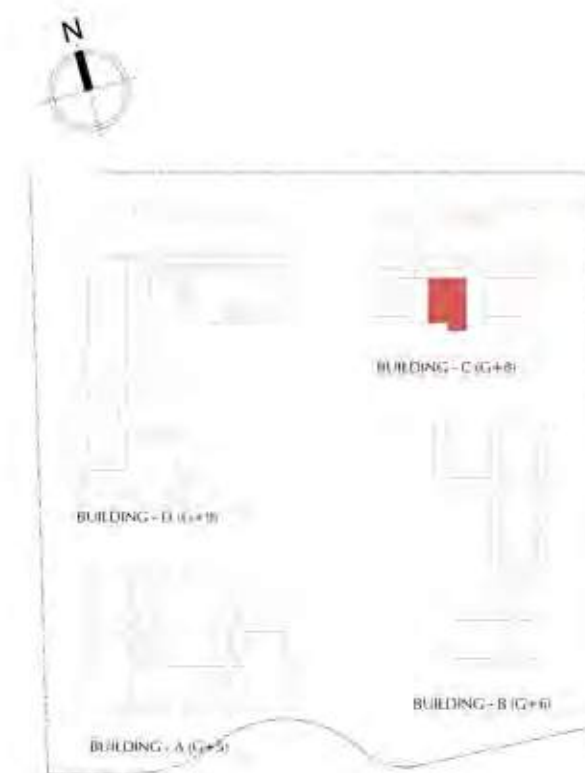


KEY PLAN:

1-Bedroom Apartment - Type C		
	SQ Ft	SQ M
Apartment Area	718.17	66.72
Terrace Area	131.97	12.26
Total Area	850.13	78.98

Building	Level
D	1, 2, 3, 4, 5, 6, 7, 8, 9

## H1 Unit Layout – 1-Bedroom Type D

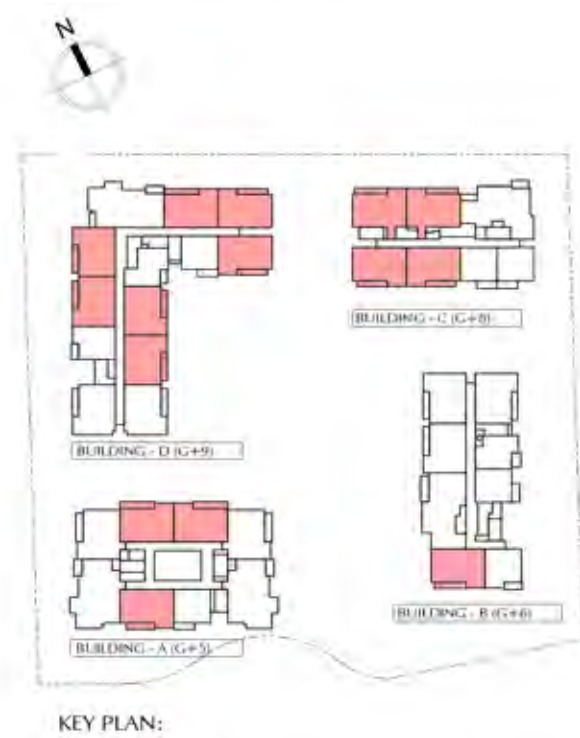


KEY PLAN:

1-Bedroom Apartment - Type D		
	SQ Ft	SQ M
Apartment Area	774.57	71.96
Terrace Area	134.55	12.5
Total Area	909.12	84.46

Building	Level
C	1

## H1 Unit Layout – 2-Bedroom Type A



2-Bedroom Apartment - Type A		
	SQ Ft	SQ M
Apartment Area	1096.2	101.84
Terrace Area	187.08	17.38
Total Area	1283.27	119.22

Building	Level
A	1, 2, 3, 4, 5
B	2, 3, 4, 5, 6
C	2, 3, 4, 5, 6
D	1, 2, 3, 4, 5, 6, 7, 8, 9

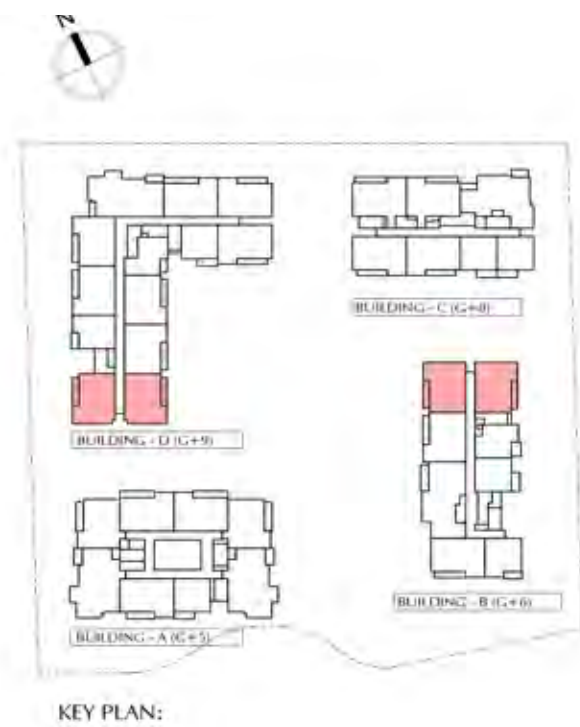
## H1 Unit Layout – 2-Bedroom Type B



2-Bedroom Apartment - Type B		
	SQ Ft	SQ M
Apartment Area	1121.49	104.19
Terrace Area	197.73	18.37
Total Area	1319.22	122.56

Building	Level
A	1, 2, 3

## H1 Unit Layout – 2-Bedroom Type C



2-Bedroom Apartment - Type C		
	SQ Ft	SQ M
Apartment Area	1132.26	105.19
Terrace Area	123.57	11.48
Total Area	1255.83	116.67

Building	Level
B	3, 4, 5, 6
D	1, 2, 3, 4, 5, 6, 7, 8, 9

## H1 Unit Layout – 2-Bedroom Type D

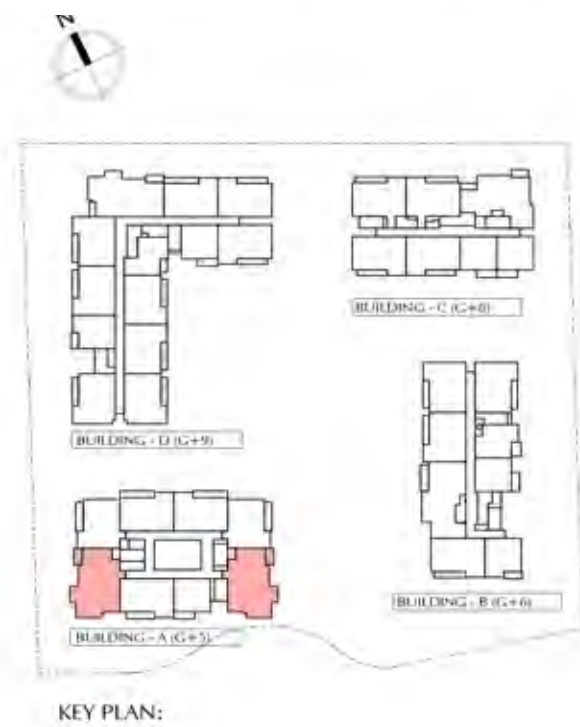
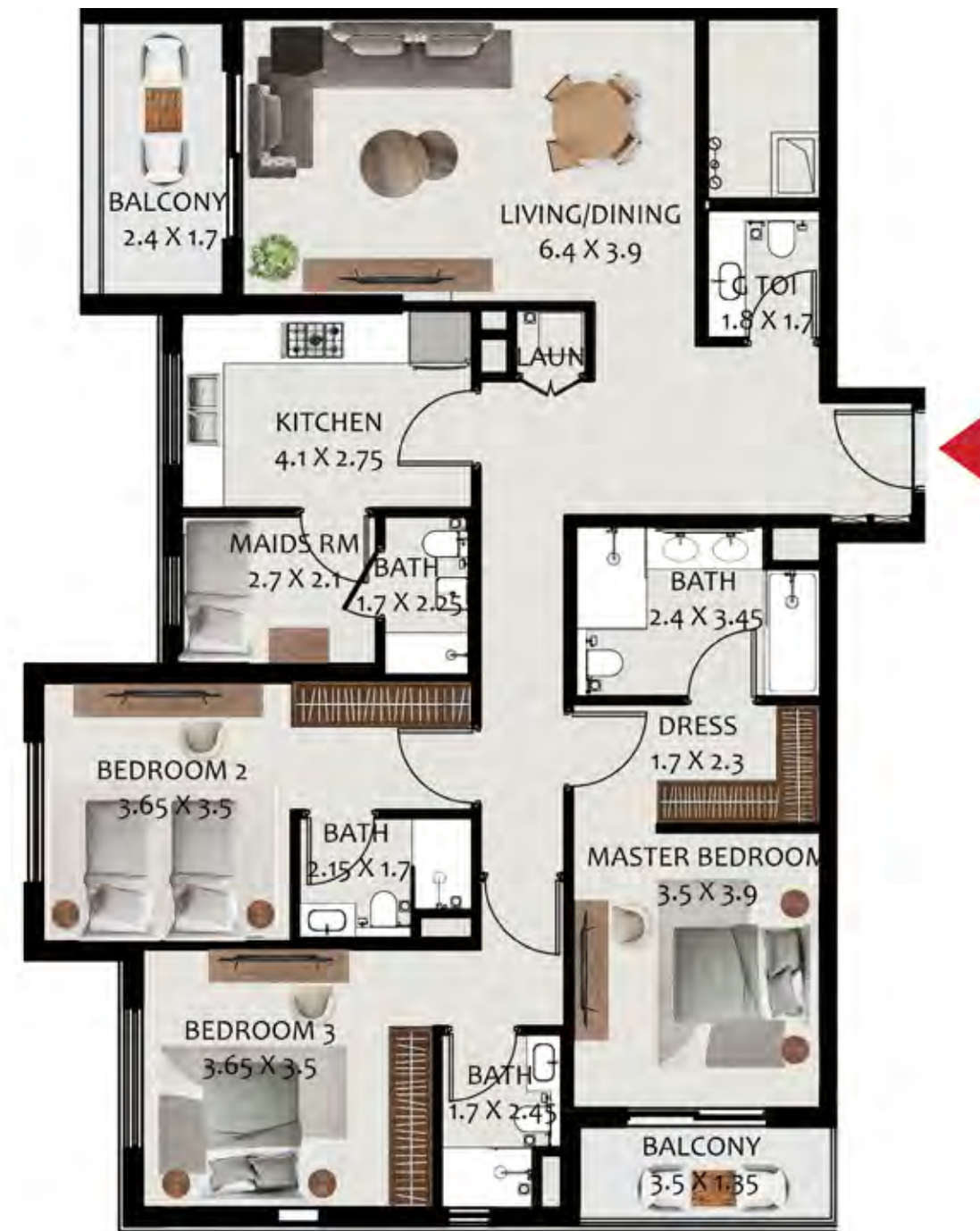


2-Bedroom Apartment - Type D		
	SQ Ft	SQ M
Apartment Area	1172.94	108.97
Terrace Area	195.69	18.18
Total Area	1368.63	127.15

Building	Level
C	1, 2, 3, 4, 5, 6, 7, 8

## H1 Unit Layout – 3-Bedroom Type A

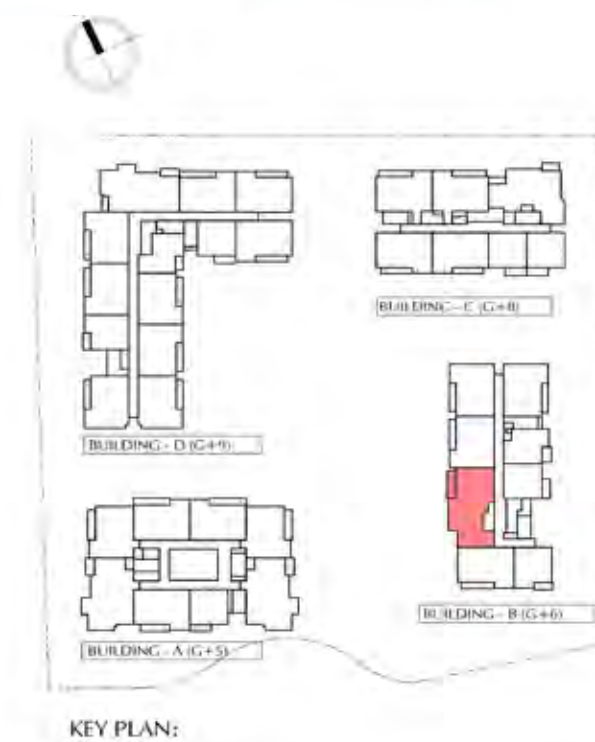


3-Bedroom Apartment - Type A		
	SQ Ft	SQ M
Apartment Area	1660.98	154.31
Terrace Area	167.57	13.26
Total Area	1828.55	167.57

Building	Level
A	1, 2, 3, 4, 5

## H1 Unit Layout – 3-Bedroom Type B



3-Bedroom Apartment - Type B		
	SQ Ft	SQ M
Apartment Area	1604.47	149.06
Terrace Area	342.83	31.85
Total Area	1947.3	180.91

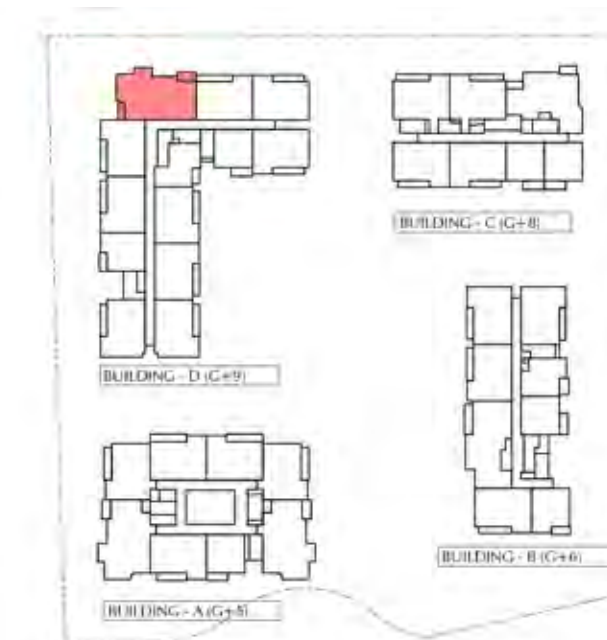
Building	Level
B	2, 3, 4, 5, 6

# H1 Unit Layout – 3-Bedroom Type C



3-Bedroom Apartment - Type C		
	SQ Ft	SQ M
Apartment Area	1603.82	149
Terrace Area	146.28	13.59
Total Area	162.59	1750.1
Building	Level	
C	1, 2, 3, 4, 5, 6, 7, 8	

# H1 Unit Layout – 3-Bedroom Type D



3-Bedroom Apartment - Type D		
	SQ Ft	SQ M
Apartment Area	1617.82	150.3
Terrace Area	312.69	29.05
Total Area	1930.51	179.35
Building	Level	
D	1, 2, 3, 4, 5, 6, 7, 8, 9	



H1 Unit Layout –  
2-Bedroom Duplex - Type DX A1

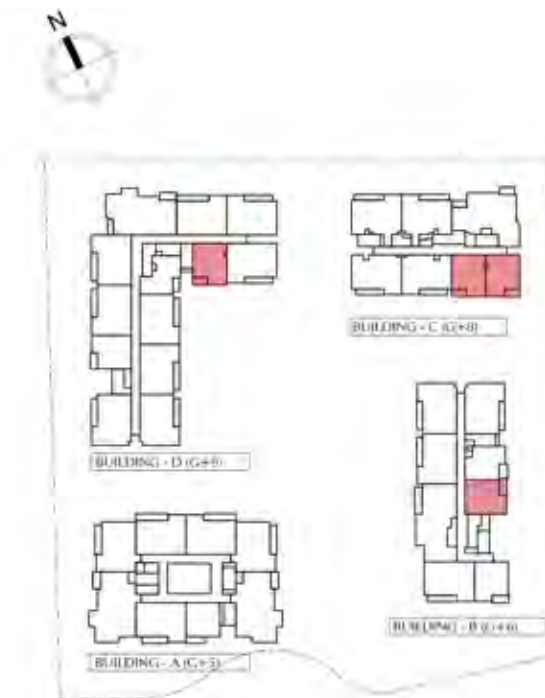


H1 Unit Layout –  
2-Bedroom Penthouse - Type DX A2



2-Bedroom Duplex - Type DX A1		
	SQ Ft	SQ M
Apartment Area	1587.14	147.45
Terrace Area	151.45	14.07
Total Area	1738.59	161.52

Building	Level
A	1&2
D	1&2



KEY PLAN:

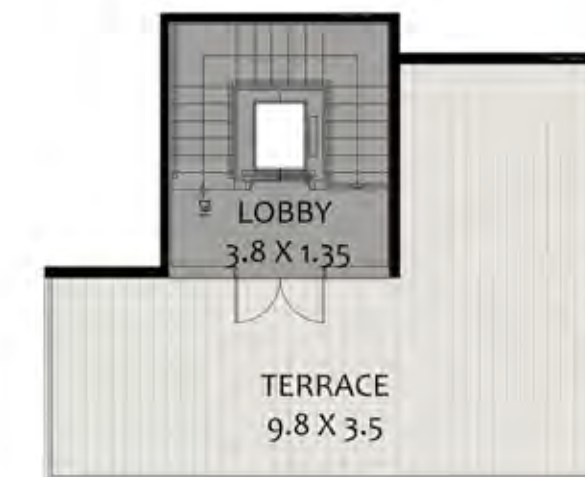
2-Bedroom Penthouse - Type DX A2		
	SQ Ft	SQ M
Apartment Area	1587.14	147.45
Terrace Area	151.45	14.07
Total Area	1738.59	161.52

Building	Level
B	6 & 5
C	8 & 7
D	8 & 9

### H1 Unit Layout – 3-Bedroom Skyvilla - Type DX A



### H1 Unit Layout – 3-Bedroom Penthouse - Type DX B



2-Bedroom Skyvilla - Type DX A		
	SQ Ft	SQ M
Apartment Area	2491.31	231.45
Terrace Area	617.96	57.41
Total Area	3109.26	288.86

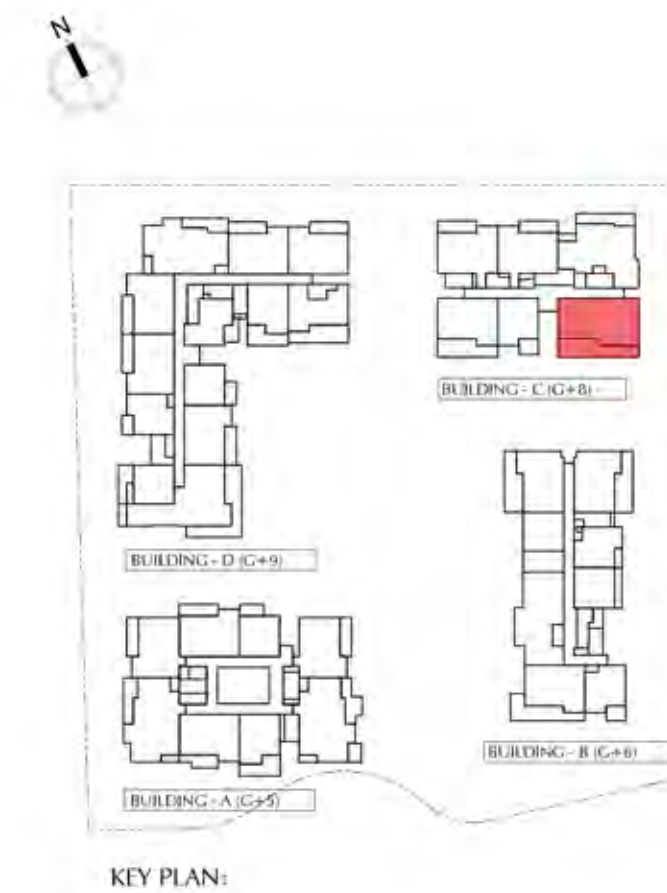
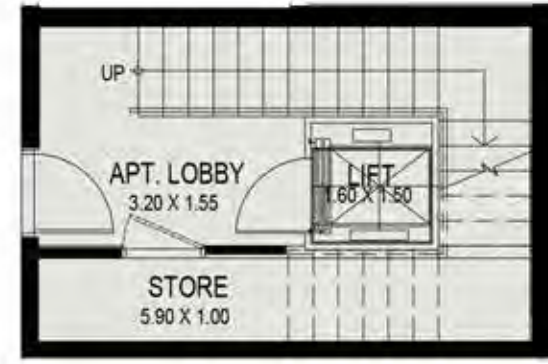
Building	Level
B	Private Entry at Gf, 1 & 2
C	Private Entry at Gf, 1 & 2
D	Private Entry at Gf, 1 & 2



3-Bedroom Penthouse - Type DX B		
	SQ Ft	SQ M
Apartment Area	2415.42	224.4
Terrace Area	797.82	74.12
Total Area	3213.24	298.52

Building	Level
B	5,6 & Private terrace at roof
C	7,8 & Private terrace at roof
D	8,9 & Private Terrace At Roof

H1 Unit layout –  
4-Bedroom Skyvilla - Type DX A



2-Bedroom Skyvilla - Type DX A		
	SQ Ft	SQ M
Apartment Area	2530.06	235.05
Terrace Area	497.72	46.24
Total Area	3027.78	281.29

Building	Level
C	Private Entry at GF, 1 & 2













**A505**  
**2B/ TYPE A2**

APARTMENT AREA	1092.32 SQ.FT	101.48 SQ.MT
BALCONY AREA	139.61 SQ.FT	12.97 SQ.MT
TOTAL	1231.93 SQ.FT	114.45 SQ.MT

**A506**  
**2B/ TYPE A3**

APARTMENT AREA	1092.11 SQ.FT	101.46 SQ.MT
BALCONY AREA	139.39 SQ.FT	12.95 SQ.MT
TOTAL	1231.5 SQ.FT	114.41 SQ.MT

**A405**  
**3B/ TYPE DXC1 (UPPER LEVEL)**

APARTMENT AREA	2403.15 SQ.FT	223.26 SQ.MT
BALCONY AREA	777.69 SQ.FT	72.25 SQ.MT
TOTAL	3180.84 SQ.FT	295.51 SQ.MT

**A408**  
**3B/ TYPE DXC2 (UPPER LEVEL)**

APARTMENT AREA	2408.32 SQ.FT	223.74 SQ.MT
BALCONY AREA	772.968 SQ.FT	71.81 SQ.MT
TOTAL	3181.27 SQ.FT	295.55 SQ.MT

**A504**  
**3B/ TYPE A2**

APARTMENT AREA	1655.92 SQ.FT	153.83 SQ.MT
BALCONY AREA	140.47 SQ.FT	13.05 SQ.MT
TOTAL	1796.39 SQ.FT	166.89 SQ.MT

**A501**  
**3B/ TYPE A1**

APARTMENT AREA	1660.98 SQ.FT	154.31 SQ.MT
BALCONY AREA	140.47 SQ.FT	13.05 SQ.MT
TOTAL	3181.27 SQ.FT	167.36 SQ.MT

**A503**  
**2B/ TYPE A1**

APARTMENT AREA	1096.20 SQ.FT	101.84 SQ.MT
BALCONY AREA	113.88 SQ.FT	10.58 SQ.MT
TOTAL	1210.08 SQ.FT	112.42 SQ.MT

**A502**  
**1B/ TYPE A1**

APARTMENT AREA	696.86 SQ.FT	64.74 SQ.MT
BALCONY AREA	81.48 SQ.FT	7.57 SQ.MT
TOTAL	778.34 SQ.FT	72.31 SQ.MT







**B101**  
**3B/ TYPE DXA1 ( UPPER LEVEL)**

APARTMENT AREA	2491.31SQ.FT	231.45 SQ.MT
BALCONY AREA	617.96SQ.FT	57.41 SQ.MT
<b>TOTAL</b>	<b>3109.26SQ.FT</b>	<b>288.86 SQ.MT</b>

**B201**  
**3B/ TYPE B1**

APARTMENT AREA	1609.96 SQ.FT	149.57 SQ.MT
BALCONY AREA	216.25 SQ.FT	20.09 SQ.MT
<b>TOTAL</b>	<b>1826.21 SQ.FT</b>	<b>169.66 SQ.MT</b>

**B202**  
**AB/ TYPE A1**

APARTMENT AREA	1111.80 SQ.FT	103.29 SQ.MT
BALCONY AREA	128.95 SQ.FT	11.98 SQ.MT
<b>TOTAL</b>	<b>1240.76 SQ.FT</b>	<b>115.27 SQ.MT</b>

**B102**  
**3B/ TYPE DXA2 ( UPPER LEVEL)**

APARTMENT AREA	2635.44SQ.FT	1244.84 SQ.MT
BALCONY AREA	527.65SQ.FT	49.02 SQ.MT
<b>TOTAL</b>	<b>13163.08SQ.FT</b>	<b>293.86 SQ.MT</b>



**B205**  
**1B/ TYPE B1**

APARTMENT AREA	68.50 SQ.FT	737.33 SQ.MT
BALCONY AREA	82.88 SQ.FT	7.7 SQ.MT
<b>TOTAL</b>	<b>820.21 SQ.FT</b>	<b>76.2 SQ.MT</b>

**B204**  
**1B/ TYPE A1**

APARTMENT AREA	701.27 SQ.FT	65.15 SQ.MT
BALCONY AREA	90.63 SQ.FT	8.42 SQ.MT
<b>TOTAL</b>	<b>791.90 SQ.FT</b>	<b>73.57 SQ.MT</b>

**B203**  
**1B/ TYPE E1**

APARTMENT AREA	719.68 SQ.FT	66.86 SQ.MT
BALCONY AREA	82.77 SQ.FT	7.69 SQ.MT
<b>TOTAL</b>	<b>802.45 SQ.FT</b>	<b>74.55 SQ.MT</b>

**B103**  
**3B/ TYPE DXA3**

APARTMENT AREA	2639.42SQ.FT	245.21 SQ.MT
BALCONY AREA	125.40SQ.FT	49.36 SQ.MT
<b>TOTAL</b>	<b>3170.73SQ.FT</b>	<b>294.57 SQ.MT</b>



**B508**  
**1B/TYPE DXB1 ( LOWER LEVEL)**

APARTMENT AREA	2415.42 SQ.FT	224.4 SQ.MT
BALCONY AREA	82.88 SQ.FT	74.12 SQ.MT
TOTAL	819.46 SQ.FT	76.13 SQ.MT

**B501**  
**3B/TYPE B1**

APARTMENT AREA	1610.93 SQ.FT	149.66 SQ.MT
BALCONY AREA	217.54 SQ.FT	20.21 SQ.MT
TOTAL	1928.47 SQ.FT	217.54 SQ.MT

**B502**  
**2B/TYPE A1**

APARTMENT AREA	1110.62 SQ.FT	103.18 SQ.MT
BALCONY AREA	217.54 SQ.FT	20.21 SQ.MT
TOTAL	1240.54 SQ.FT	169.87 SQ.MT

**B503**  
**2B/TYPE C1**

APARTMENT AREA	1131.61 SQ.FT	105.13 SQ.MT
BALCONY AREA	123.57 SQ.FT	11.48 SQ.MT
TOTAL	1255.18 SQ.FT	116.61 SQ.MT



**B507**  
**1B/TYPE B1**

APARTMENT AREA	736.57 SQ.FT	68.43 SQ.MT
BALCONY AREA	82.88 SQ.FT	7.7 SQ.MT
TOTAL	819.46 SQ.FT	76.13 SQ.MT

**B506**  
**2B/TYPE DXA1 ( LOWER LEVEL)**

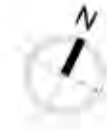
APARTMENT AREA	1587.14 SQ.FT	147.45 SQ.MT
BALCONY AREA	151.45 SQ.FT	14.07 SQ.MT
TOTAL	1738.59 SQ.FT	161.52 SQ.MT

**B505**  
**1B/TYPE F1**

APARTMENT AREA	719.68 SQ.FT	66.86 SQ.MT
BALCONY AREA	76.10 SQ.FT	7.07 SQ.MT
TOTAL	795.78 SQ.FT	73.93 SQ.MT

**B504**  
**2B/TYPE C2**

APARTMENT AREA	1134.09 SQ.FT	105.36 SQ.MT
BALCONY AREA	123.46 SQ.FT	11.47 SQ.MT
TOTAL	1257.55 SQ.FT	116.83 SQ.MT



**B508**

**3B/ TYPE DXB1**

APARTMENT AREA	2415.42SQ.FT	224.40 SQ.MT
BALCONY AREA	797.82SQ.FT	74.12 SQ.MT
TOTAL	3213.24SQ.FT	298.52 SQ.MT

**B501**

**3B/ TYPE B1**

APARTMENT AREA	1610.93SQ.FT	149.66 SQ.MT
BALCONY AREA	217.54SQ.FT	20.21 SQ.MT
TOTAL	1828.47SQ.FT	169.87 SQ.MT

**B502**

**2B/ TYPE A1**

APARTMENT AREA	1110.62SQ.FT	103.18 SQ.MT
BALCONY AREA	129.92SQ.FT	12.07 SQ.MT
TOTAL	1240.54SQ.FT	115.25 SQ.MT



**B503**

**2B/ TYPE C1**

APARTMENT AREA	1131.61SQ.FT	105.13 SQ.MT
BALCONY AREA	123.57SQ.FT	11.48 SQ.MT
TOTAL	1255.18SQ.FT	116.61 SQ.MT

**B504**

**2B/ TYPE C2**

APARTMENT AREA	1134.09SQ.FT	105.36 SQ.MT
BALCONY AREA	123.46SQ.FT	11.47 SQ.MT
TOTAL	1257.55SQ.FT	116.83 SQ.MT

**B507**

**1B/ TYPE B1**

APARTMENT AREA	736.57SQ.FT	68.43 SQ.MT
BALCONY AREA	82.88SQ.FT	7.70 SQ.MT
TOTAL	819.46SQ.FT	76.13 SQ.MT

**B506**

**2B/ TYPE DXA1**

APARTMENT AREA	1587.14SQ.FT	147.45 SQ.MT
BALCONY AREA	151.45SQ.FT	14.07 SQ.MT
TOTAL	1738.59SQ.FT	161.52 SQ.MT

**B505**

**1B/ TYPE F1**

APARTMENT AREA	719.68SQ.FT	66.86 SQ.MT
BALCONY AREA	76.10SQ.FT	7.07 SQ.MT
TOTAL	795.78SQ.FT	73.93 SQ.MT



# H1 Building C Level 1



## C103 2B/TYPE D1

APARTMENT AREA	1172.94 SQ.FT	108.97 SQ.MT
BALCONY AREA	195.69 SQ.FT	18.18 SQ.MT
<b>TOTAL</b>	<b>1368.63 SQ.FT</b>	<b>127.15 SQ.MT</b>

## C104 2B/TYPE D2

APARTMENT AREA	1171.87 SQ.FT	108.87 SQ.MT
BALCONY AREA	195.58 SQ.FT	18.17 SQ.MT
<b>TOTAL</b>	<b>1367.45 SQ.FT</b>	<b>127.04 SQ.MT</b>

## C105 3B/TYPE C1

APARTMENT AREA	1603.82 SQ.FT	149.00 SQ.MT
BALCONY AREA	345.22 SQ.FT	32.10 SQ.MT
<b>TOTAL</b>	<b>1949.34 SQ.FT</b>	<b>181.10 SQ.MT</b>



## C102 3B/TYPE DXA1 (LOWER LEVEL)

APARTMENT AREA	2517.25 SQ.FT	233.86 SQ.MT
BALCONY AREA	523.45 SQ.FT	48.63 SQ.MT
<b>TOTAL</b>	<b>3040.70 SQ.FT</b>	<b>282.49 SQ.MT</b>

## C101 1B/TYPE D1

APARTMENT AREA	774.57 SQ.FT	71.96 SQ.MT
BALCONY AREA	134.55 SQ.FT	12.5 SQ.MT
<b>TOTAL</b>	<b>909.12 SQ.FT</b>	<b>84.46 SQ.MT</b>

## C106 4B/TYPE DXA1 (LOWER LEVEL)

APARTMENT AREA	3215.18 SQ.FT	298.7 SQ.MT
BALCONY AREA	740.23 SQ.FT	68.77 SQ.MT
<b>TOTAL</b>	<b>3955.41 SQ.FT</b>	<b>367.47 SQ.MT</b>



**C202**  
**2B/ TYPE D1**

APARTMENT AREA	1177.14SQ.FT	109.36 SQ.MT
BALCONY AREA	132.72SQ.FT	12.33 SQ.MT
TOTAL	1309.86SQ.FT	121.69 SQ.MT

**C203**  
**2B/ TYPE D2**

APARTMENT AREA	1172.94SQ.FT	108.97 SQ.MT
BALCONY AREA	134.23SQ.FT	12.47 SQ.MT
TOTAL	1307.17SQ.FT	121.44 SQ.MT



**C204**  
**3B/ TYPE C1**

APARTMENT AREA	1603.82SQ.FT	149.0 SQ.MT
BALCONY AREA	146.28SQ.FT	13.59 SQ.MT
TOTAL	1750.10SQ.FT	162.59 SQ.MT

**3B/ TYPE DXA1 ( UPPER LEVEL)**

**C201**  
**2B/ TYPE A1**

APARTMENT AREA	1112.23SQ.FT	103.33 SQ.MT
BALCONY AREA	124.0SQ.FT	11.52 SQ.MT
TOTAL	1236.24SQ.FT	114.85 SQ.MT

**4B/ TYPE DXA1 ( UPPER LEVEL)**



**C303,403,503,603**

**2B/TYPE01**

APARTMENT AREA	1177.14 SQ.FT	109.36 SQ.MT
BALCONY AREA	132.72 SQ.FT	12.33 SQ.MT
<b>TOTAL</b>	<b>1309.86 SQ.FT</b>	<b>121.69 SQ.MT</b>

**C304,404,504,604**

**2B/TYPE02**

APARTMENT AREA	1174.02 SQ.FT	109.07 SQ.MT
BALCONY AREA	133.15 SQ.FT	12.37 SQ.MT
<b>TOTAL</b>	<b>1307.17 SQ.FT</b>	<b>121.44 SQ.MT</b>



**C305,405,505,605**

**3B/TYPE C1**

APARTMENT AREA	1603.82 SQ.FT	149.00 SQ.MT
BALCONY AREA	146.28 SQ.FT	13.59 SQ.MT
<b>TOTAL</b>	<b>1750.10 SQ.FT</b>	<b>162.59 SQ.MT</b>

**C306,406,506,606**

**1B/TYPE A1**

APARTMENT AREA	700.41 SQ.FT	65.07 SQ.MT
BALCONY AREA	92.25 SQ.FT	8.57 SQ.MT
<b>TOTAL</b>	<b>792.65 SQ.FT</b>	<b>73.64 SQ.MT</b>

**C302,402,502,602**

**2B/TYPE A2**

APARTMENT AREA	1114.7 SQ.FT	103.51 SQ.MT
BALCONY AREA	123.46 SQ.FT	11.47 SQ.MT
<b>TOTAL</b>	<b>1237.63 SQ.FT</b>	<b>114.98 SQ.MT</b>

**C301,401,501,601**

**2B/TYPE A1**

APARTMENT AREA	1112.23 SQ.FT	103.33 SQ.MT
BALCONY AREA	124.00 SQ.FT	11.52 SQ.MT
<b>TOTAL</b>	<b>1236.24 SQ.FT</b>	<b>114.85 SQ.MT</b>

**C307,407,507,607**

**1B/TYPE A2**

APARTMENT AREA	699.55 SQ.FT	64.99 SQ.MT
BALCONY AREA	92.25 SQ.FT	8.57 SQ.MT
<b>TOTAL</b>	<b>791.79 SQ.FT</b>	<b>73.54 SQ.MT</b>



**C703  
2B / TYPE D1**

APARTMENT AREA	1177.14 SQ.T	109.36 SQ.MT
BALCONY AREA	132.72 SQ.FT	12.33 SQ.MT
TOTAL	1309.86 SQ.FT	121.69 SQ.MT

**C704  
2B / TYPE D2**

APARTMENT AREA	1173.16 SQ.FT	108.99 SQ.MT
BALCONY AREA	145.53 SQ.FT	13.52 SQ.MT
TOTAL	1318.69 SQ.FT	122.51 SQ.MT

**C705  
3B / TYPE C1**

APARTMENT AREA	1603.82 SQ.FT	149 SQ.MT
BALCONY AREA	146.28 SQ.FT	13.59 SQ.MT
TOTAL	1750.10 SQ.FT	162.59 SQ.MT



**C706  
2B / TYPE DXA1 (LOWER LEVEL)**

APARTMENT AREA	1580.68 SQ.TF	146.85 SQ.MT
BALCONY AREA	120.88 SQ.FT	11.23 SQ.MT
TOTAL	1701.56 SQ.FT	158.08 SQ.MT

**C702  
3B / TYPE DXB1 (LOWER LEVEL)**

APARTMENT AREA	2418.33 SQ.FT	224.67 SQ.MT
BALCONY AREA	772.74 SQ.FT	71.79 SQ.MT
TOTAL	3191.07 SQ.FT	296.46 SQ.MT

**C701  
3B / TYPE DXD1 (LOWER LEVEL)**

APARTMENT AREA	2420.05 SQ.FT	224.83 SQ.MT
BALCONY AREA	753.58 SQ.FT	70.01 SQ.MT
TOTAL	3173.63 SQ.FT	294.84 SQ.MT

**C707  
2B / TYPE DXA2 (LOWER LEVEL)**

APARTMENT AREA	1588.32 SQ.TF	147.56 SQ.MT
BALCONY AREA	120.88 SQ.FT	11.23 SQ.MT
TOTAL	1709.20 SQ.FT	158.79 SQ.MT



**C801  
2B / TYPE D1**

APARTMENT AREA	1177.14 SQ.T	109.36 SQ.MT
BALCONY AREA	132.72 SQ.FT	12.33 SQ.MT
TOTAL	1309.86 SQ.FT	121.69 SQ.MT

**C802  
2B / TYPE D2**

APARTMENT AREA	1173.16 SQ.FT	108.99 SQ.MT
BALCONY AREA	145.53 SQ.FT	13.52 SQ.MT
TOTAL	1318.69 SQ.FT	122.51 SQ.MT

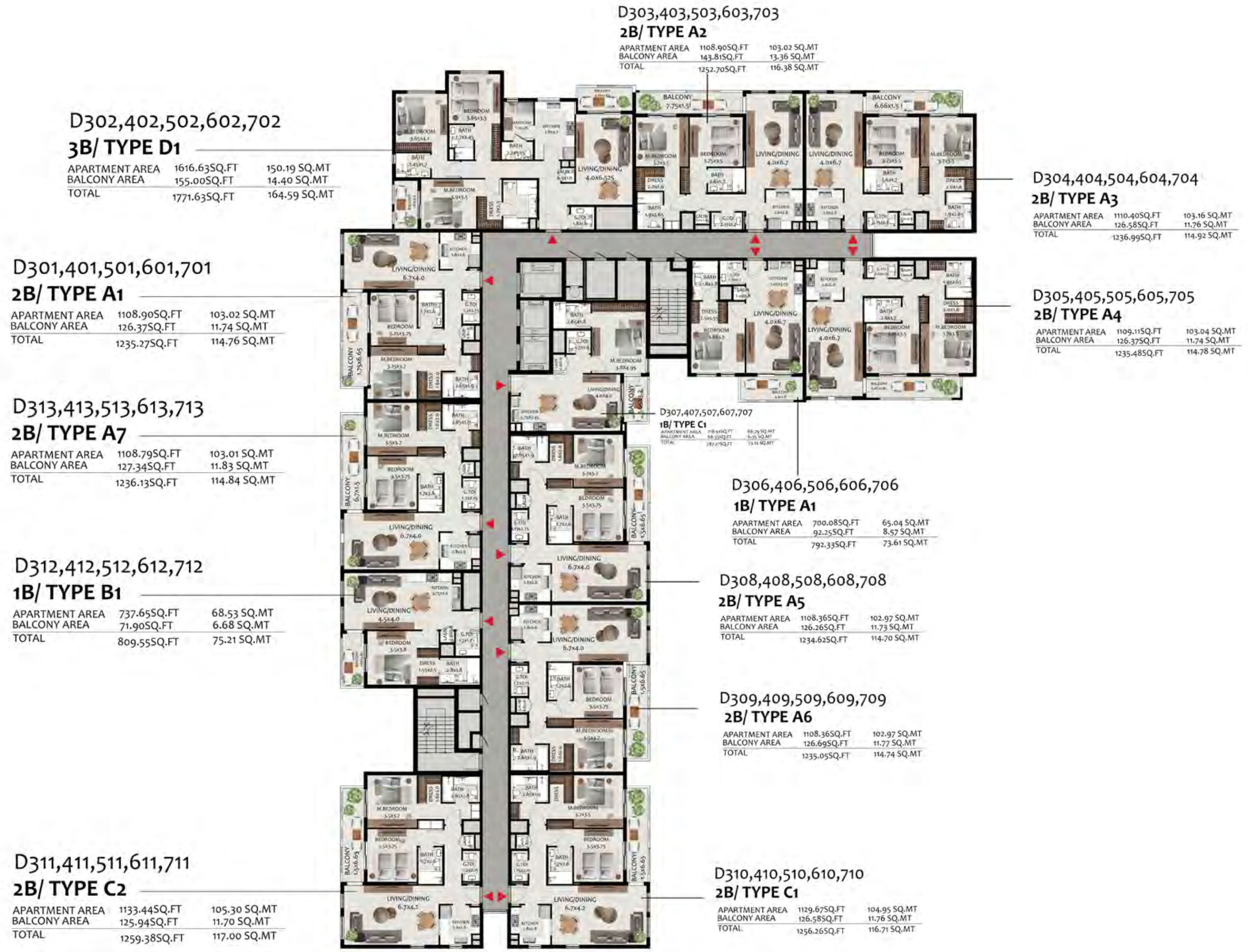
**C803  
3B / TYPE C1**

APARTMENT AREA	1603.82 SQ.FT	149.0 SQ.MT
BALCONY AREA	146.28 SQ.FT	13.59 SQ.MT
TOTAL	1750.10 SQ.FT	162.59 SQ.MT















Wasl Gate

---

# Wasl Gate

Experience a life  
like nowhere else.

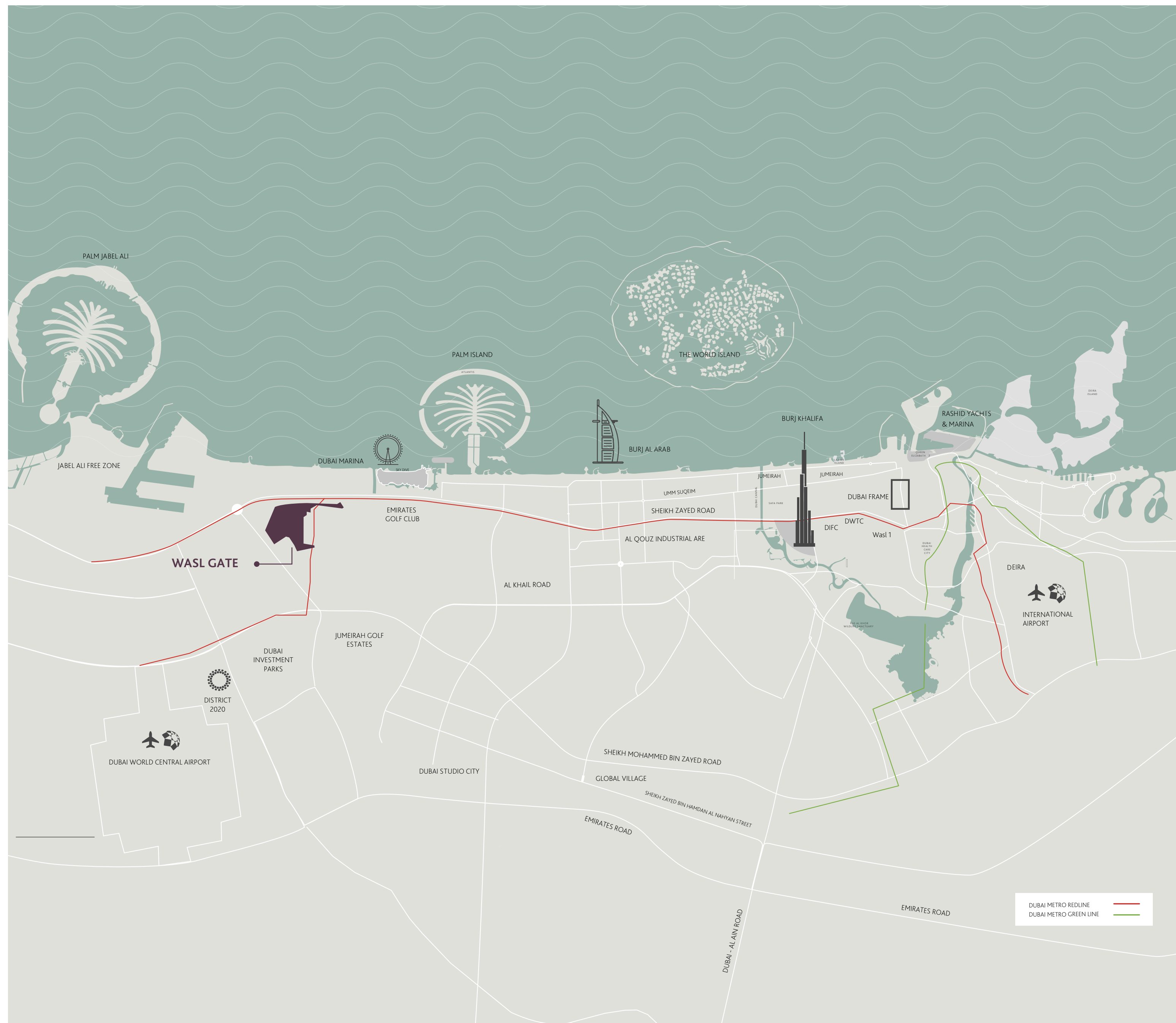
Welcome to a freehold master development that has something for everyone. Whether you choose to live, work or simply visit Wasl Gate, you will experience a life like nowhere else.

A cosmopolitan development offering apartments, townhouses, dining, retail businesses and much more. It also houses Festival Plaza Mall by Al Futtaim - bringing a brand-new IKEA and ACE to south Dubai. An ideal location on Sheikh Zayed Road, with immediate access to the Energy Metro Station, Al Maktoum International Airport and the world renowned Expo 2020. A place you can call home, every day, only at Wasl Gate.

# Be surrounded by a great network.

Designed to transform urban living, Hillside Residences offers you easy access to an extensive network of roads, metro line and buses. While you're just minutes away from Sheikh Zayed Road and Energy Metro Station, Al Maktoum International Airport and Expo City are just a short drive away.

Palm Jabel Ali	10 Min
Dubai Marina	10 Min
Palm Jumeirah	15 Min
Al Maktoum International Airport	20 Min
Burj Khalifa	20 Min
Dubai International Financial Centre	20 Min
Dubai World Trade Centre	25 Min
Dubai International Airport	30 Min





# Live at the centre of it all.

Malls, parks, retail outlets, dining out - no matter what your definition of fun is, Hillside Residences has it all. Right in your neighbourhood is Festival Plaza Mall by Al Futtaim with a new IKEA and ACE. And the Central Park, with its lush and picturesque landscaping, makes sure urban living comes full circle.



Festival Plaza Mall



Energy Metro Station



Central Park



DogPark



Retail outlets



Church



Temple



Mosque

# From Dubai's very own master developer

Wasl is one of the largest real estate asset management groups in Dubai, with a mandate from the government to commercialise its strategic land.

With an extensive portfolio of residential and commercial properties, industrial lands and world-class leisure destinations, Wasl is a dominant force driving Dubai's socio-economic growth and creating memorable experiences for residents and visitors alike.

Wasl's commitment to delivering high-quality properties that meet the needs of a diverse range of tenants and investors has helped establish them as a leading regional player.



## WASL In Numbers

50,000<sup>+</sup>

Residential &  
Commercial Units

4

Freehold Master  
Developments

7

Community Malls

32<sup>+</sup>

Hotels &  
Hotel Apartments

7,960<sup>+</sup>

Hotel Rooms

5,500<sup>+</sup>

Land Plots of  
Various Uses

8<sup>+</sup>

Golf Clubs

120<sup>+</sup>

Restaurants

1000<sup>+</sup>

Buildings

