

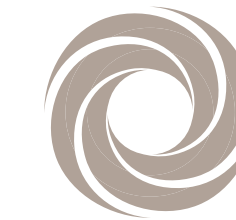


JUMEIRAH  
GOLF ESTATES

PINEWOOD VILLAGE

wasl





## JUMEIRAH GOLF ESTATES

At Jumeirah Golf Estates, there is an exceptional district to suit everyone, a special place to call home and a place to thrive. Whether starting out on life's great adventure, raising a family or enjoying a new chapter of resort-style living, the districts are designed to offer a quality of life.

- 1. Central Park
- 2. Pinewood Village
- 3. Town Centre
- 4. Golf District
- 5. Equestrian Village
- 6. Transit Oriented Development

# ESTATES LIVING HAS EVOLVED

The next chapter of Jumeirah Golf Estates marks a natural progression in the community's legacy, building on the foundations of its iconic original development. Designed as a luxurious retreat from the rush of everyday life, it offers serene living with effortless access to the vibrant heart of one of the world's most dynamic cities.







# RESORT STYLE LIVING

The magnificent five-star Mandarin Oriental Hotel and Golf Resort invites you to indulge in exceptional hospitality, exquisite dining and the finest comforts of resort living. It's the perfect place for friends and family of residents, for those looking for a weekend break, and for visitors from across the world.

## Amenities



Golf Course



5 Star Hotel



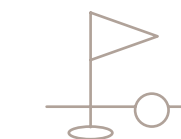
Tennis Stadium



Equestrian Centre



Clubhouse



Country Club



Jogging Track



Equestrian Trail



Hospital



School



Etihad Rail



Metro Station



Mosque



Central Park



Pools



Cycling Track



PINEWOOD VILLAGE  
DISTRICT



# PINEWOOD VILLAGE DISTRICT

The Estate Homes is part of the Pinewood Village District, blending modern architecture with sophisticated minimalism. It features sleek lines, a balanced design, and energy-efficient elements, demonstrating a clear commitment to sustainability. Both the international school and the health facility are located within this district, offering world-class education and high-quality healthcare close to home.











PINEWOOD ESTATE HOMES  
EXTERIOR

# PINEWOOD ESTATE HOMES ARCHITECTURE

The architecture of Estate Homes is a testament to modern design, meticulously crafted to blend with the breathtaking natural surroundings. Each Estate Home is a sanctuary of elevated architectural and interior standards, featuring sophisticated contemporary lines softened by a palette of earthy tones and natural textures.







3 BEDROOM

# PINEWOOD ESTATE HOMES

The 3 bedroom Pinewood Estate Homes embody a harmonious blend of sophistication and functionality. Adorned with an exquisite skylight and spacious, luminous interiors, it creates an inviting ambience that elevates the art of luxurious living.



Skylight



114

115

# 3 BEDROOM PINWOOD ESTATE HOMES

Plot Area

Min. 221.43 sqm  
2383.42 sqft

Max. 341.71 sqm  
3678.13 sqft

Sellable Area

319.44 sqm  
3438.42 sqft

Keyplan



4 BEDROOM

# PINEWOOD ESTATE HOMES

The 4 bedroom Pinewood Estate Homes are crafted with the same attention to detail. The exteriors are intentionally designed to showcase stunning views of the surrounding parks and lush greenery, allowing residents to fully immerse themselves in the natural beauty that surrounds their home.



Skylight





07

08

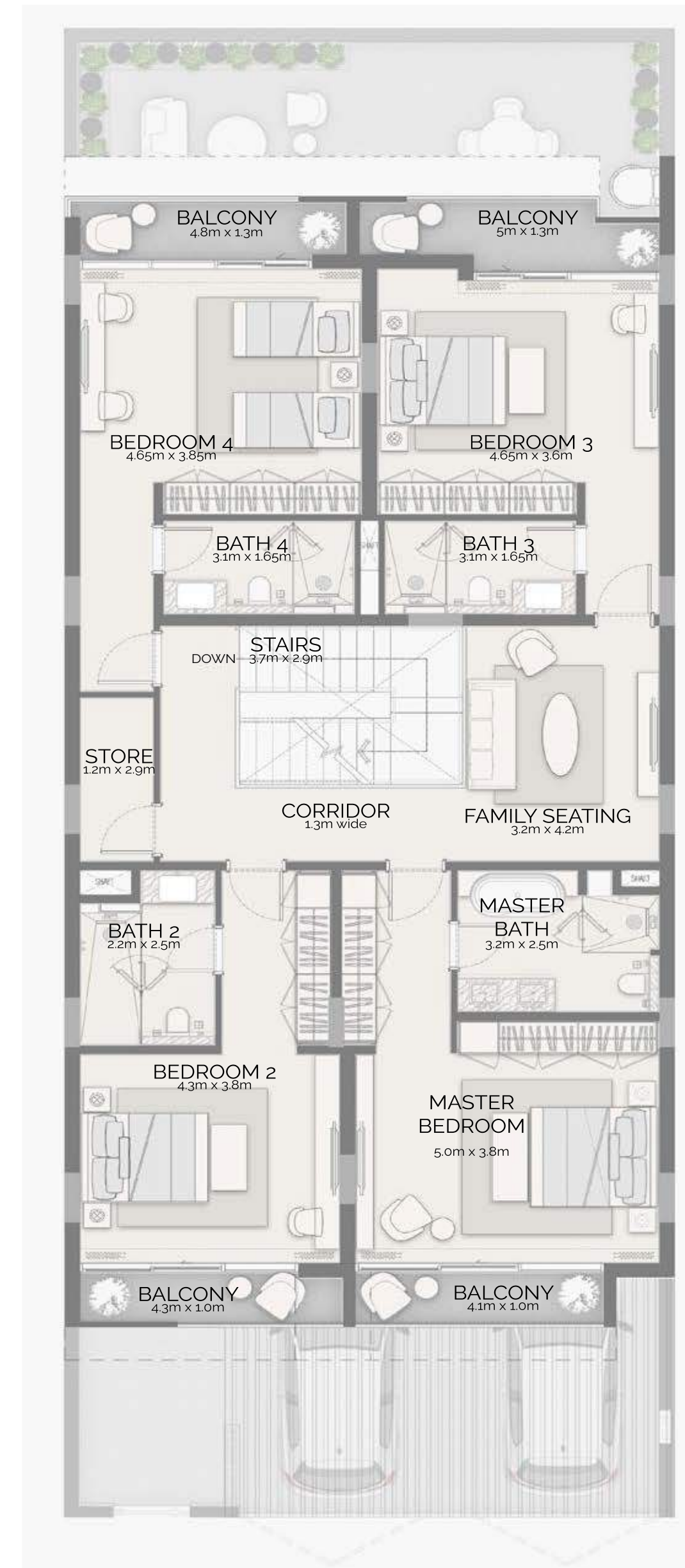
# 4 BEDROOM

## PINEWOOD ESTATE HOMES

Plot Area  
 Min. 275.94 sqm  
 2970.19 sqft  
 Max. 307.34 sqm  
 3308.18 sqft

Sellable Area  
 393.3 sqm  
 4233.45 sqft

Keyplan





4 BEDROOM CORNER

# PINEWOOD ESTATE HOMES

The stunning 4 bedroom corner Pinewood Estate Homes showcase an extraordinary architectural design, featuring elevated Estate Homes equipped with magnificent views, private pool, elevator, and rooftop access with canopy.



Magnificent view



Private Pool



Elevator



Rooftop access with canopy



112

# 4 BEDROOM CORNER

## PINEWOOD ESTATE HOMES



Plot Area  
 Min. 394.20 sqm  
 4243.13 sqft  
 Max. 675.32 sqm  
 7269.08 sqft

Sellable Area  
 432.85 sqm  
 4659.16 sqft



Keyplan





PINEWOOD ESTATE HOMES  
INTERIOR



# NATURAL ELEGANCE

Step into a world of refined elegance where natural, neutral elements create a serene and sophisticated ambiance. Our interiors are thoughtfully designed to blend seamlessly with the surrounding environment, featuring soft, earthy tones and luxurious materials that evoke a sense of tranquility and timeless beauty. Experience the perfect harmony of nature and luxury in every corner of our exquisite spaces, all finished to the highest standards of quality.





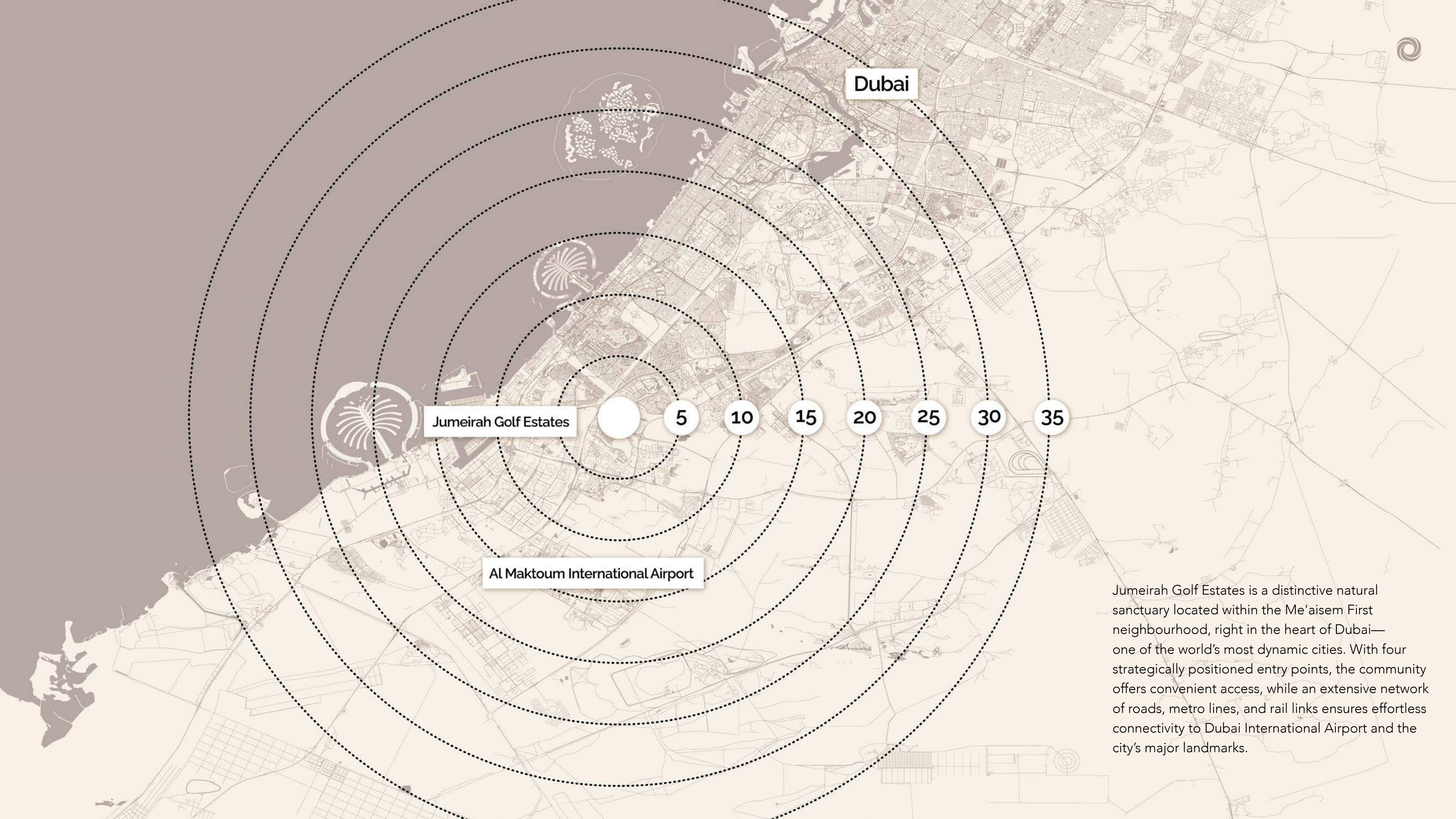








JUMEIRAH GOLF ESTATES  
DESTINATION



Dubai

Jumeirah Golf Estates

Al Maktoum International Airport

5

10

15

20

25

30

35

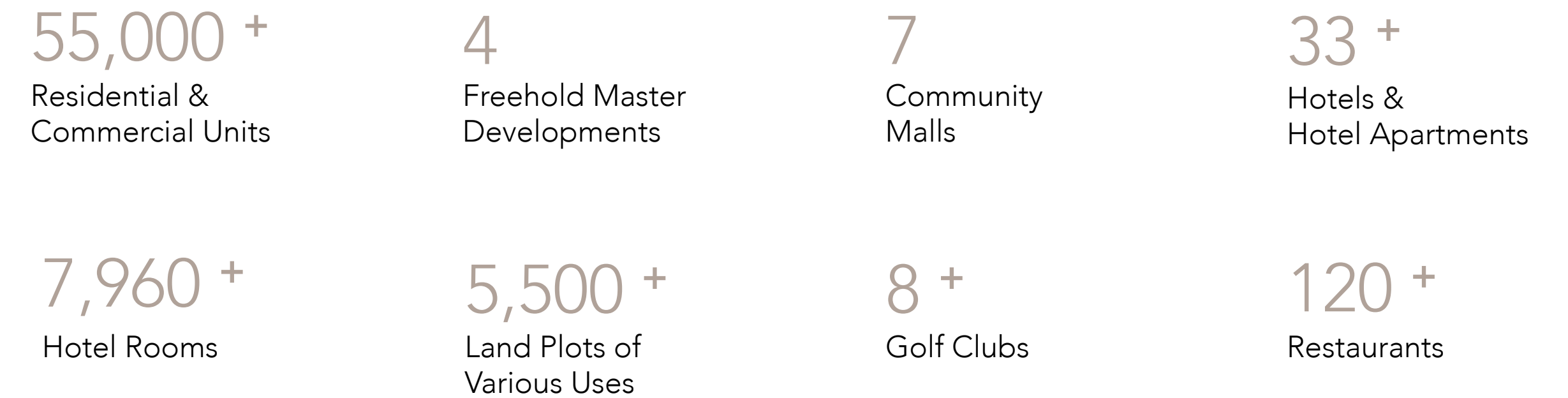
Jumeirah Golf Estates is a distinctive natural sanctuary located within the Me'aisem First neighbourhood, right in the heart of Dubai—one of the world's most dynamic cities. With four strategically positioned entry points, the community offers convenient access, while an extensive network of roads, metro lines, and rail links ensures effortless connectivity to Dubai International Airport and the city's major landmarks.



# FROM DUBAI'S VERY OWN MASTER DEVELOPER.

Wasl is one of the largest real estate asset management groups in Dubai, with a mandate from the government to commercialise its strategic land. With an extensive portfolio of residential and commercial properties, industrial lands and world-class leisure destinations, Wasl is a dominant force driving Dubai's socio-economic growth and creating memorable experiences for residents and visitors alike.

## Wasl In Numbers



For more information, please call 800 (WASL)  
Visit our website at [wasl.ae](http://wasl.ae) or visit Wasl Experience Centre, Dubai UAE.  
18 52C St - Al Safa - Al Safa 2 - Dubai 8:00 AM to 5:00 PM, Monday - Friday





JUMEIRAH  
GOLF ESTATES

wasl

Disclaimer: The renderings and visualisations contained in this brochure are provided for illustrative and marketing purposes. While the information provided is believed to be accurate and reliable at the time of printing, only the information contained in the final Sales and Purchase Agreement will have any legal effect.

[jumeirahgolfestates.com](http://jumeirahgolfestates.com)