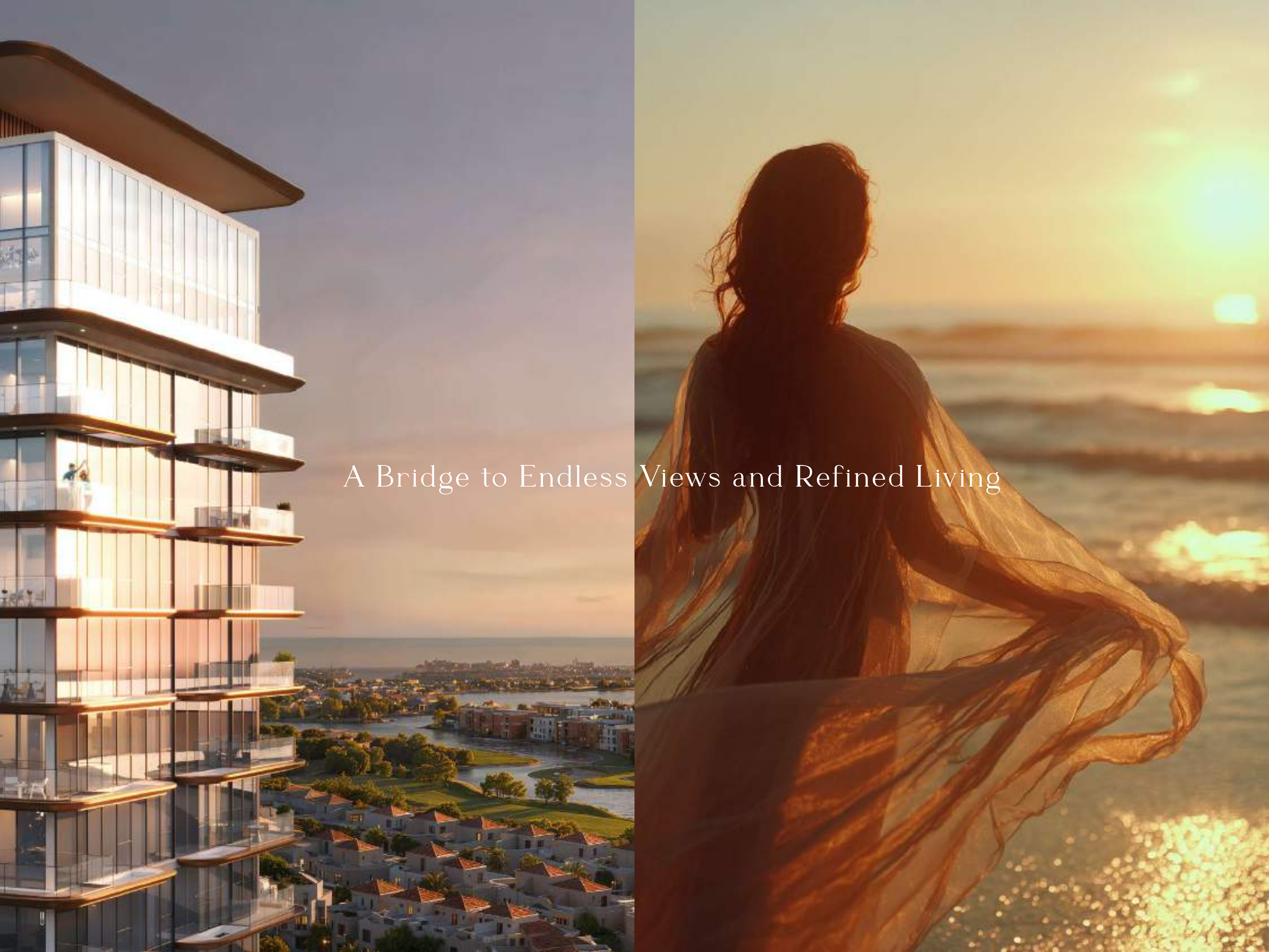




# SOTO GRANDE

BROCHURE



A Bridge to Endless Views and Refined Living

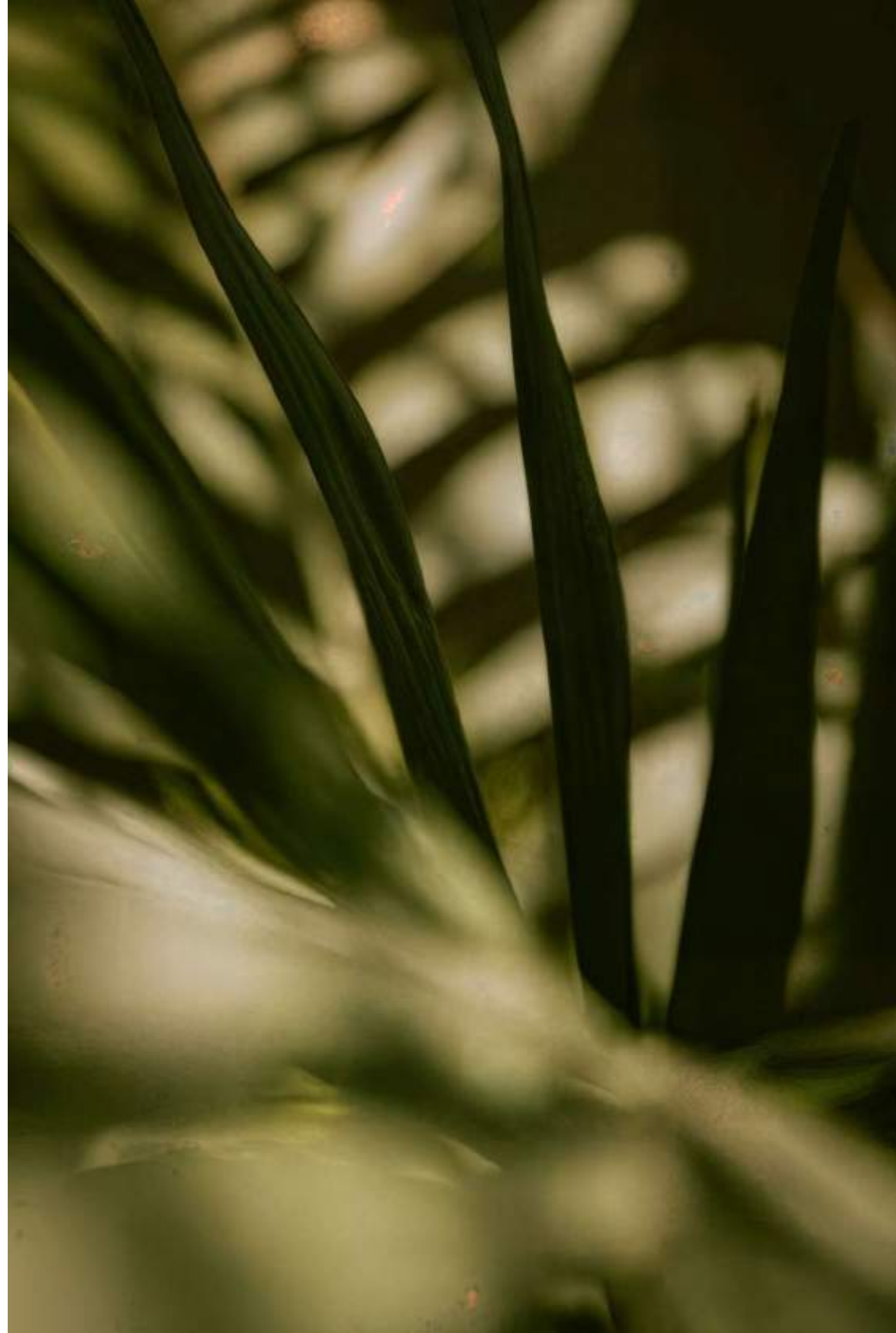


## RAS AL KHAIMAH'S NEW STATEMENT IN DESIGN

Since 2014, Ellington Properties has shaped the UAE skyline with residences that unite timeless elegance and modern innovation. Each project goes beyond architecture, creating communities rooted in comfort, belonging, and beauty.

Soto Grande, the newest landmark in Ras Al Khaimah, features two refined towers joined by an architectural bridge that embodies contrast and balance. More than residences, they are sanctuaries where community thrives, art inspires, and wellness defines daily life.

Welcome to life redefined.



Presenting



# SOTO GRANDE



# CRAFTED WITH DESIGN AT ITS CORE

Two sculptural towers rise gracefully, their flowing curves and architectural bridge forming a striking new silhouette on the Ras Al Khaimah shore. Designed with balance in mind, the exterior captures the duality of nature and modernity — timeless yet contemporary, bold yet serene.





## SHAPED BY LIGHT

The façade reflects movement and light, with soft contours that shift with the sun. Expansive balconies blur the line between indoors and out, framing sweeping views of sea, sky, and city.



## A BRIDGE OF HARMONY

Two sculptural towers rise gracefully, their flowing curves and architectural bridge forming a striking new silhouette on the Ras Al Khaimah shore. Designed with balance in mind, the exterior captures the duality of nature and modernity — timeless yet contemporary, bold yet serene





## GOLF LIFESTYLE IN RAS AL KHAIMA

At the heart of Al Hamra is an 18-hole championship golf course that unites sport, leisure, and community. Built to international standards and playable by day or night, it offers a truly distinctive golfing experience.

Set against scenic lagoons, ocean horizons, and lush greenery, the course is more than a venue—it's a lifestyle hub where residents and visitors come together. From seasoned golfers to casual players, Al Hamra's golf culture reflects refinement, recreation, and a sense of belonging in a world-class coastal setting.

## AN ICON RISING BY THE COASTLINE

Every detail of Soto Grande's exterior reflects an architectural philosophy rooted in fluidity. From landscaped terraces to inviting outdoor lounges, the development harmonizes with its coastal surroundings while creating a private sanctuary for its residents.





## FRAMED BY NATURE

From every balcony, sweeping views of the Arabian Gulf, lush greens, and Ras Al Khaimah's evolving skyline unfold. It intentionally serves as a constant invitation to pause, breathe, and embrace the beauty of nature



A modern glass skyscraper with balconies overlooking a city and a lake at sunset. The building is the central focus, with its glass facade reflecting the warm light of the setting sun. The balconies are visible, some with plants and furniture. In the background, a city with a mix of low-rise and mid-rise buildings is visible, along with a large body of water and a golf course. The sky is a mix of blue and orange, with the sun low on the horizon.

A THRIVING  
DESTINATION  
REIMAGINED

THE  
AMENITIES





## LIFE IN BALANCE

The lobby and reception at Soto Grande set the tone for the residences within, a statement of elegance from the very first step. Double-height ceilings and an abundance of natural light create a sense of openness, while curated art and sculptural details add depth and character. At the heart of the space, a central living tree anchors the design, bringing warmth and vitality into the interior.

The reception is seamlessly integrated, ensuring an experience that is both welcoming and refined. More than a point of arrival, the lobby is a place where hospitality, design, and comfort converge, offering residents and guests an atmosphere of calm sophistication.



LOBBY RECEPTION & LOUNGE



## A SANCTUARY OF STILLNESS

The courtyard at Soto Grande is envisioned as the heart of outdoor living. Designed as a natural extension of the towers, it blends landscaped greenery with sculpted pathways, shaded seating, and soft lighting to create an inviting atmosphere throughout the day. Water-inspired features bring movement and calm, while open lawns and quiet corners provide spaces for relaxation and pause.

More than a passage, the courtyard becomes a gathering place, a setting for casual conversations, evening strolls, or simply unwinding in the embrace of nature. It is a thoughtfully designed environment that encourages both community and solitude, balancing vibrancy with tranquillity.





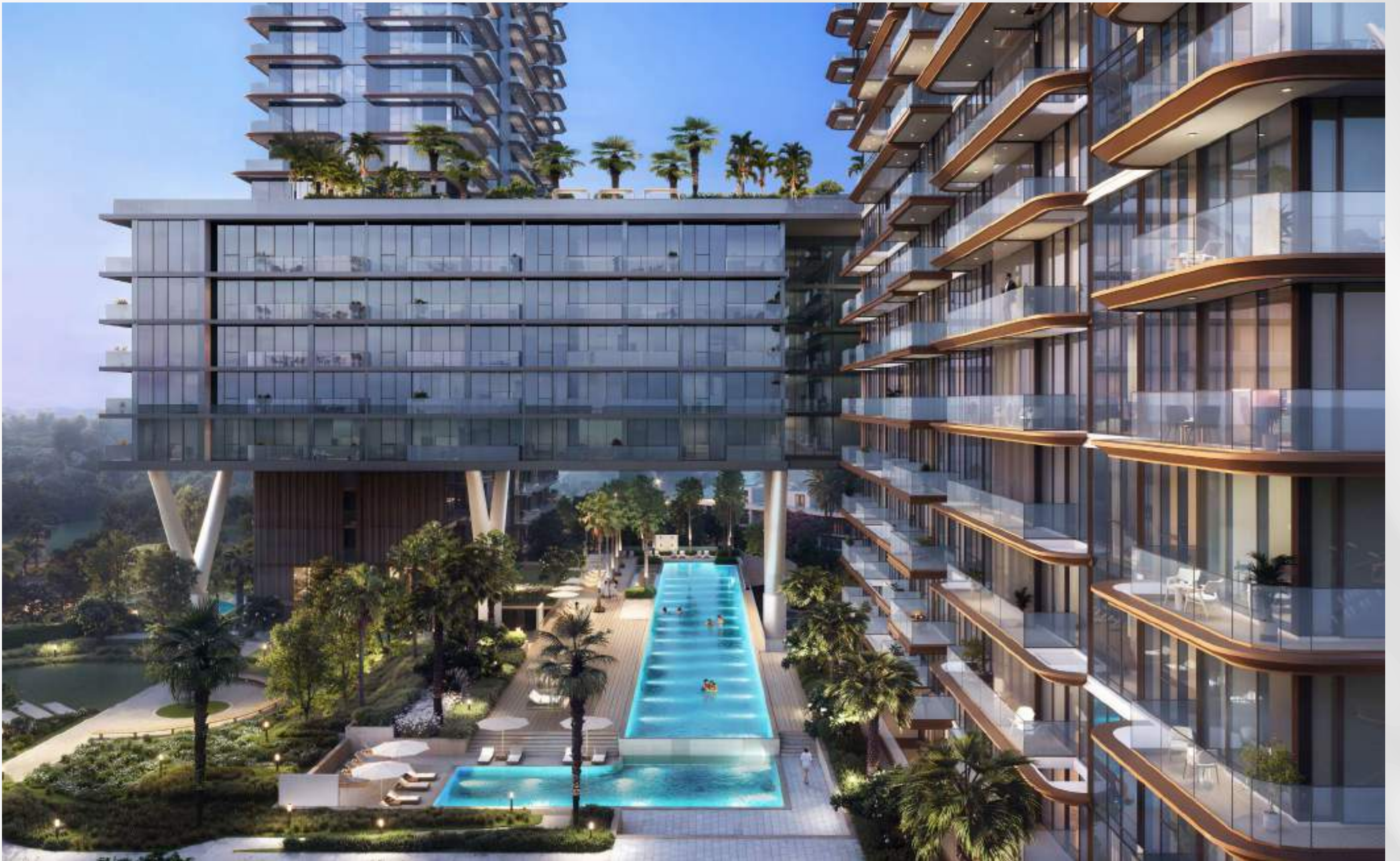
ACCESS TO COURTYARD



## BUILT FOR FOCUS

The lap pool at Soto Grande has been thoughtfully designed as a dedicated space for performance, rhythm, and renewal. Its elongated, uninterrupted layout invites both focused training sessions and gentle, meditative swims, transforming exercise into a ritual of clarity and flow. Framed by landscaped greenery and softened by natural light, the atmosphere strikes a balance between energy and calm.

Whether used for morning laps, evening stretches in the water, or moments of reflection along the poolside, it offers residents a setting that elevates both body and mind. More than a facility, the lap pool is an integral part of Soto Grande's wellness journey, a place where movement becomes second nature and balance is restored each day.



  
LAP POOL



## A CALMING ESCAPE

The leisure pool is conceived as a sanctuary for relaxation and retreat. Surrounded by lush landscaping and thoughtfully arranged cabanas, it offers residents a calm setting to slow down and enjoy the rhythm of the outdoors. Gentle water features and sun-drenched loungers create a resort-like ambiance, where mornings begin with quiet reflection and afternoons unfold in the company of family and friends.

Designed for ease and comfort, the leisure pool is not only a place to cool off but also a social space where residents can unwind, recharge, and embrace moments of serenity. It reflects Soto Grande's commitment to wellness, offering a restorative environment where every detail encourages balance and renewal.





LEISURE POOL



BELONG.  
CONNECT.  
FLOURISH

The resident-exclusive clubhouse is designed as a social anchor within Soto Grande. Filled with natural light and framed by views of the pool and landscaped surroundings, it blends comfort with a sense of occasion. Lounge seating, a private dining area, and an entertainment kitchen create versatile spaces for both intimate gatherings and lively celebrations. Every detail, from furnishings to finishes, is curated to foster a warm, welcoming atmosphere. More than an amenity, the clubhouse is a place where neighbors become friends and everyday moments transform into lasting memories.



  
CLUB LOUNGE



## DESIGNED FOR ENERGY

The fitness studio is designed to inspire movement and motivation, combining striking architecture with advanced functionality. Its impressive double-height ceiling creates an open, uplifting atmosphere, while natural light floods the space to enhance energy and focus. Equipped with state-of-the-art machines and training zones, it caters to every style of workout from high-intensity training to mindful stretching.

A sculptural obstacle course adds a dynamic element, encouraging variety and challenge for all levels of fitness. Beyond the equipment, floor-to-ceiling windows frame views of the pool and landscaped surroundings, blurring the line between indoor activity and the calming beauty of the outdoors.





FITNESS STUDIO



## MINDFUL BALANCE

The yoga studio at Soto Grande is designed as a retreat within the towers a place where stillness and movement meet. Floor-to-ceiling windows fill the space with natural daylight, creating a serene atmosphere that enhances focus and mindfulness. Minimalist interiors, warm textures, and thoughtful details establish an environment that encourages calm and clarity. Whether for morning meditation, restorative sessions, or evening stretches, the yoga studio is crafted to support body and mind, making wellness an integral part of daily life at Soto Grande.



  
YOGA STUDIO



## IMAGINATION UNFOLDS

Inspired by Ras Al Khaimah's dramatic mountains, the children's play area is designed as a vibrant landscape of imagination and adventure. Thoughtfully planned to spark creativity, it offers a safe environment where little ones can climb, explore, and discover new possibilities every day. Dedicated facilities ensure both care and comfort, from soft surfaces and shaded zones to seating areas for parents to watch and connect.

More than just a playground, it is a nurturing space that encourages learning, growth, and social interaction helping children build confidence, form friendships, and develop a sense of curiosity about the world around them. Here, play becomes a joyful journey, blending fun with development in an inspiring natural setting.





KIDS PLAY AREA



## A SPACE TO UNWIND

At the heart of the clubhouse, the kitchen lounge and private dining area create a setting designed for sharing and celebration. The entertainment kitchen is equipped to host intimate dinners, casual brunches, or larger gatherings, blending functionality with refined design. Floor-to-ceiling windows frame views of the pool and gardens, while curated furnishings add warmth and elegance.

Whether it's a family occasion or an evening with friends, these spaces transform everyday dining into memorable experiences, making the clubhouse a true social centerpiece of Soto Grande.



PRIVATE DINING AND KITCHEN



## PLAY WITHOUT LIMITS

The arcade is designed as an immersive destination where leisure and style converge. Framed by expansive floor-to-ceiling windows, it offers sweeping views that fill the space with light and energy. Classic games such as shuffleboard, table tennis, and darts are reimagined with contemporary design, while curated art pieces and modern finishes create a refined yet playful setting.

Comfortable lounge seating invites relaxation between games, encouraging conversation and connection among friends, family, and neighbors. Whether enjoyed for a quick match or an afternoon of fun, the arcade blends nostalgia with innovation, transforming casual play into moments of joy, camaraderie, and lasting memories in a space that feels both sophisticated and welcoming.





GAMES ROOM

THE  
RESIDENCES





## LIGHT, SPACE, AND STYLE

Spacious and filled with natural light, the living room is a canvas of calm sophistication. Expansive windows frame open views of the surroundings, creating a seamless connection between indoor comfort and the beauty beyond. Thoughtfully designed layouts adapt effortlessly, offering intimate corners for private moments as well as generous open spaces for elegant gatherings. Flowing naturally into the kitchen, the space enhances both everyday living and social occasions, making it as functional as it is refined.



  
LIVING AREA



## CRAFTED WITH INTENTION

Designed with both artistry and function in mind, kitchens feature flowing countertops, bronze accents, and clever storage solutions. A grand island anchors the space, equally suited for culinary creativity and casual gatherings.





  
KITCHEN



## YOUR PERSONAL RETREAT

Bedrooms are envisioned as private sanctuaries of rest and renewal, crafted with a balance of elegance and comfort. Soft textures in linens and furnishings invite relaxation, while warm, ambient lighting creates a calming atmosphere at any time of day. Expansive floor-to-ceiling windows frame uninterrupted ocean views, filling the space with natural light and a sense of openness that connects the indoors with the serenity of the coastline.



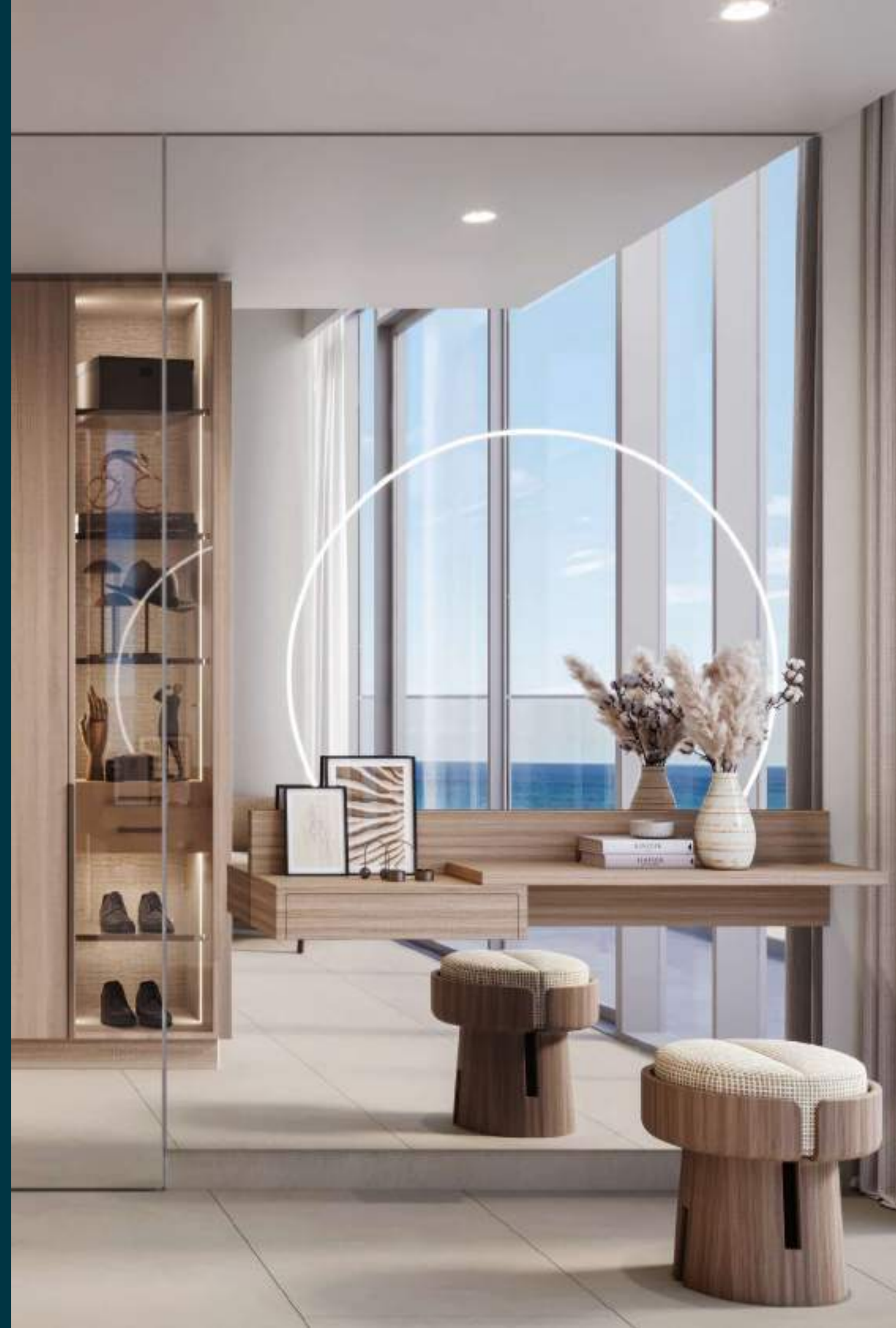
  
BEDROOMS



## ELEGANCE IN MOTION

The design of the bathrooms and wardrobes unites everyday convenience with timeless style. Bathrooms pair sleek practicality with warm, organic finishes, where rain showers, stone-effect counters, and ambient lighting transform everyday routines into restorative rituals of calm and clarity. Complementing these serene spaces, the wardrobes reflect the same thoughtful design language expansive wooden panels with integrated shelving, soft lighting, and clean lines.

More than just storage, they create an organized, elegant extension of the living space, blending natural textures with refined detailing. Together, these elements ensure that the private areas of the home feel just as considered, comfortable, and inspiring as the rest of the residence.





  
BATHROOMS

