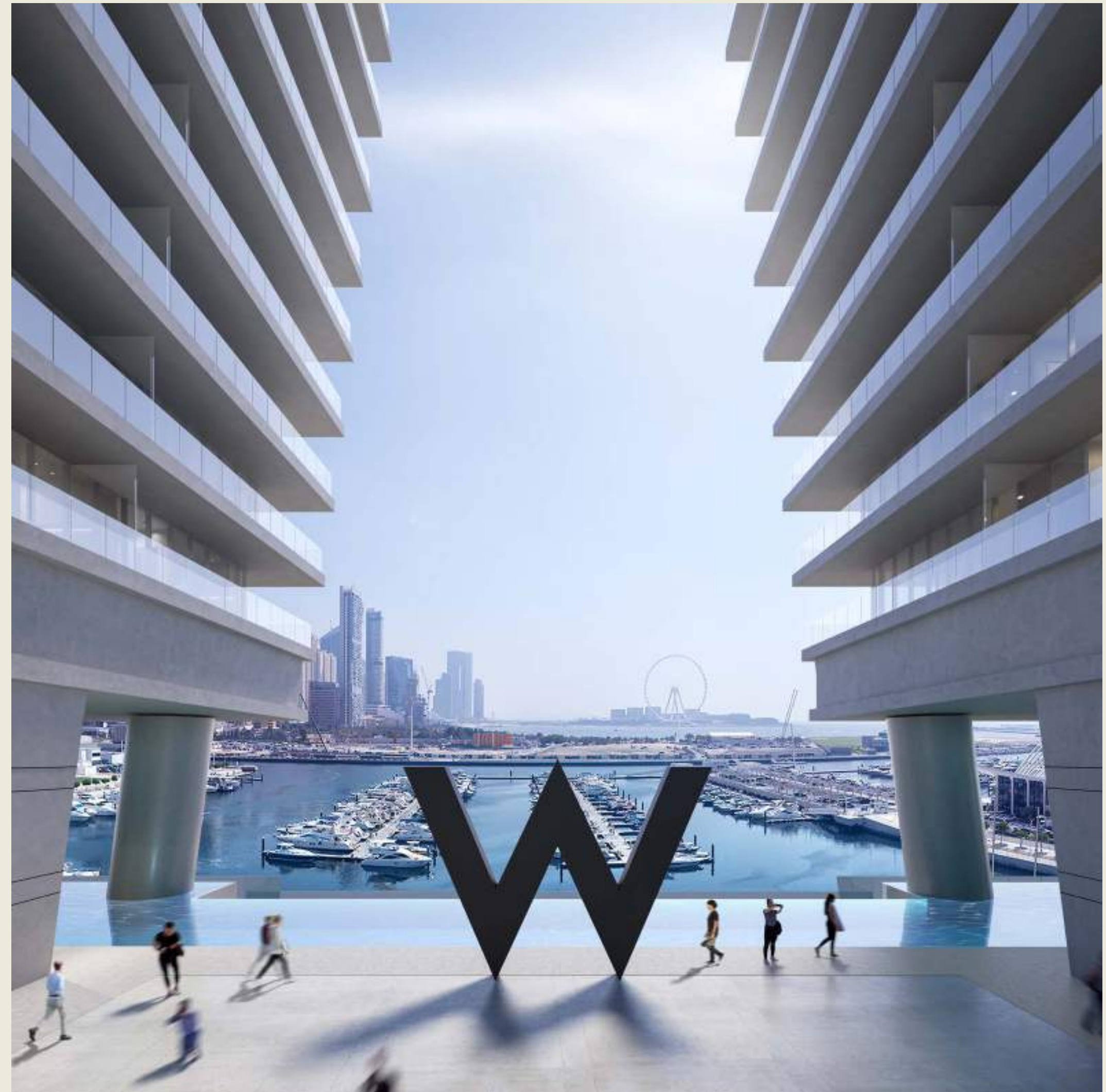




RESIDENCES

AT DUBAI HARBOUR

A LUXURY MARINA LIFESTYLE



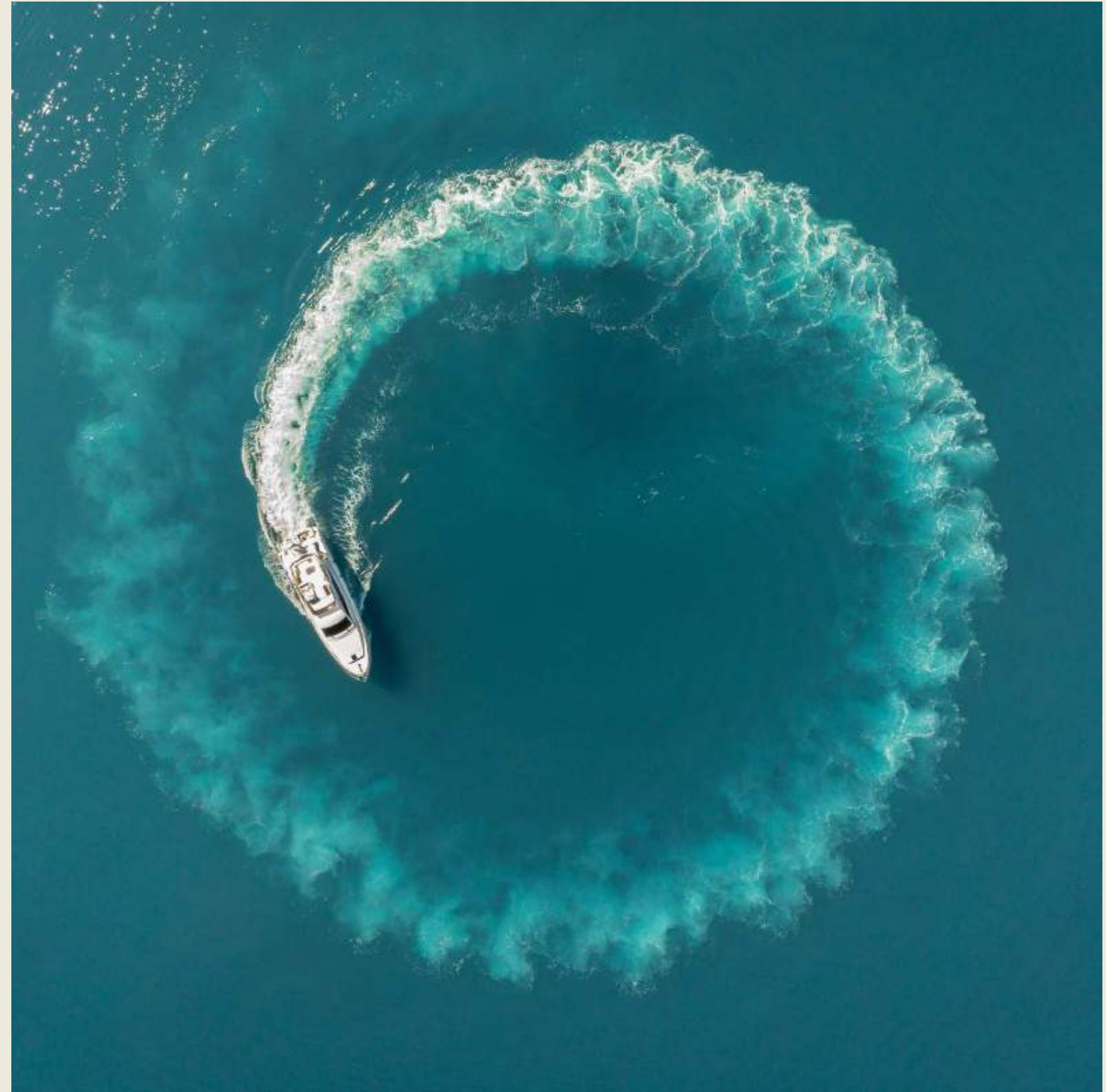


WELCOME TO W RESIDENCES DUBAI HARBOUR

Experience upscale urban living at its finest, enjoying breathtaking views of the Dubai skyline and a wide range of carefully curated amenities that are second to none.

Owners at W Residences at Dubai Harbour can enjoy an exceptional lifestyle surrounded by iconic landmarks in the beating heart of the one of the world's fastest-growing cities.

With over 400 impeccably appointed homes spread across an immaculately designed three tower complex, The Residences allow owners to experience a fulfilling, positive and active lifestyle.





AN EXTRAORDINARY SEAFRONT DISTRICT



LOCATION



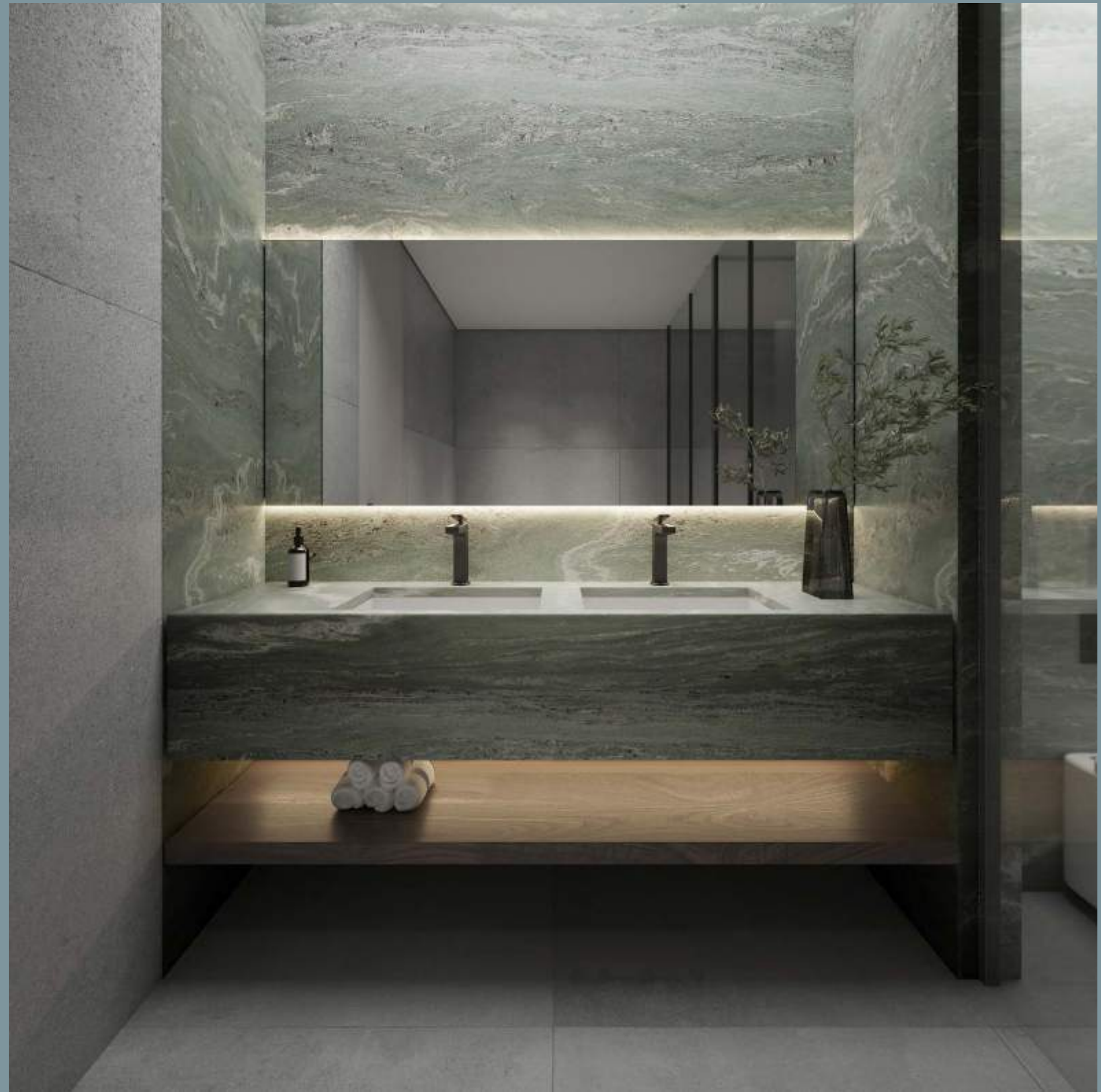
Occupying an enviable position within Dubai's newest waterfront community, W Residences at Dubai Harbour boasts captivating views of The Palm Jumeirah, Dubai Marina and Bluewaters Island, as well as the open ocean.

A seafront district like no other, Dubai Harbour seamlessly blends luxury living with a range of high-end dining, shopping and hospitality experiences, as well as a cruise terminal and the largest marina in the region.



THE LIVING IS
IN THE DETAILS







THE BUILDING

With LEED Silver-certified design that is inspired by the majesty of its surroundings, W Residences at Dubai Harbour provides a creative, stimulating environment for both residents and visitors alike.

Designed to connect three horizontal lines – the promenade, the harbour and the sky – that reflect the unique seafront and urban landscape, the three-tower complex also features striking diagonal lines that allow the buildings to ‘touch’ at points where water and sky meet.

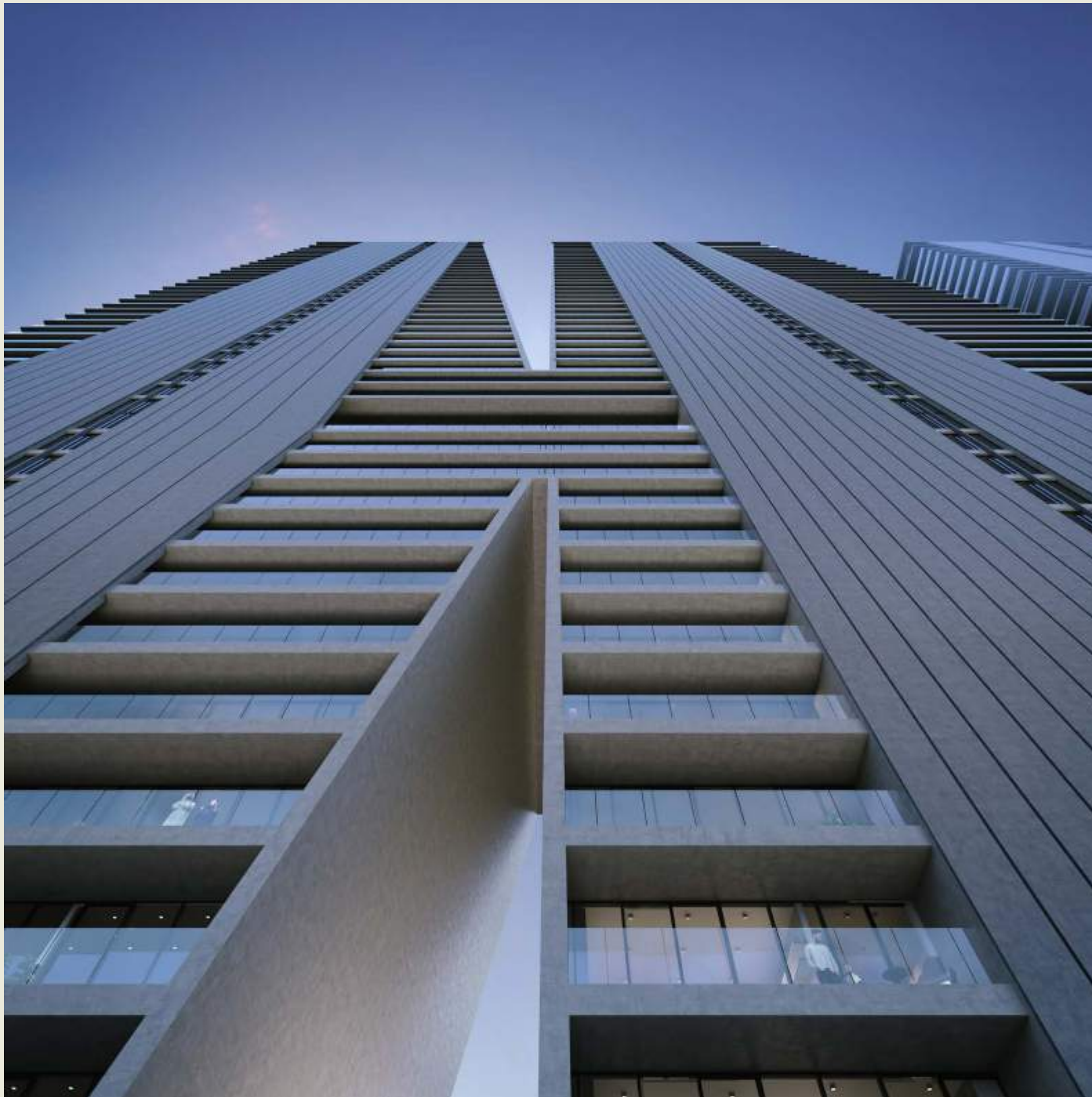
This awe-inspiring backdrop is complemented by the shared experiences that form part of the complex in the form of the world-beating amenities and services that are layered into the podium level.



AN ELEVATED LIFESTYLE







THE RESIDENCES

Welcome to W Residences at Dubai Harbour, where a wide range of layouts gives owners the chance to buy the home that best suits their needs.

Select from well-appointed one-bedroom apartments to luxurious five-bedroom residences, which include rooftop penthouses that feature pools with incomparable views. W Residences at Dubai Harbour also contains a range of

three- and four-bedroom duplex apartments located in the central section of each tower, affording an exceptional living experience.

Smart home features come as standard at all Residences, alongside warm and simple design and immaculate finishes. Each home also contains several kitchen components – including washer-dryer, cooking range and hood – provided free of charge.

WHERE THE SUN MEETS THE SEA



SPACES FOR CONNECTIVITY

The Residence Lounge is a platform for engaging and creative gatherings. A practical and inspiring co-working space by day, the Lounge transforms into a stylish social venue by night. Over 170 square meters in size, this area contains flexible and immersive, tech-enabled spaces that can be customized to fit entertainment or corporate needs.



YOGA AND PILATES STUDIOS

Residents enjoy exclusive access to premium wellness facilities in the shape of purpose-built studios dedicated to yoga and pilates. These facilities enjoy exceptional views of the surrounding cityscape while providing the perfect location to indulge in meditation and exercise.





WELLNESS SPA

The Residences also includes a spectacular wellness spa and fitness centre, designed exclusively for residents and located on the podium level. Featuring high-end services and premium relaxation and recovery amenities, this facility is dedicated to enhancing residents' wellbeing.



SCREENING ROOM

Residents can enjoy their very own Cinema, with an exclusive big screen and high-end sound system set aside for booking by owners and their guests.





WELLFIT

Spread over a 43,000 square foot location on the podium level, a flagship Wellfit wellness centre is the largest in the entire Dubai Marina area, offering a range of different workout areas and studios and the very latest high-tech equipment.



FOOD AND BEVERAGE

Life looks better at W Residences at Dubai Harbour, thanks to top-tier facilities that make this destination one of the most popular parts of this up-and-coming district.

Owners can also benefit from the carefully curated range of outlets at ground floor level, incorporating fine dining culture at its best.



LONGEST INFINITY POOL

At over 200 meters long, the WET Infinity Pool on the podium level is one of the longest in the city, complemented by a spacious pool deck and barbecue area.

GAMES ROOM



Located on the podium level, the Games Room contains the full range of classic indoor activities including pool tables and table-tennis tables, while the Sports Simulator room features specialized software linked to a big screen allowing residents to play a huge variety of e-sports.

SOUND SUITE

A private music recording studio, the Sound Suite includes a lounge, live room and main mixing room incorporating the latest high-tech equipment.

A new way for bands, DJs and musicians to get creative, this space allows artists the freedom to collaborate in an awe-inspiring location.



KIDS CLUB



Featuring expertly trained staff and a wide range of creative and fun opportunities, the spacious kids club at W Residences at Dubai Harbour offers children a fulfilling and entertaining way to spend their time. With colourful design and a busy schedule of ever-changing activities on offer, parents can rest assured knowing their children are in responsible company.



AMENITIES

- Panoramic views of Dubai Harbour, Bluewaters Island, The Palm Jumeirah and Dubai Marina from every apartment
- Smart home features as standard in each residence
- Residents-only 200m the WET Infinity Pool on the podium level
- Whatever/Whenever© 24-hour concierge service and valet parking
- Electric vehicle charging, efficient water and energy usage and responsible waste management practices
- Access to 170sqm Residence Lounge
- Screening Room, Sound Suite and Games Room
- Meeting and co-working spaces and guest suites for visiting friends or relatives
- Residents-only FITgym, wellness spa, yoga and pilates studio and kids club
- Residents can also enjoy the 43,000 sqft Wellfit fitness centre
- Easy access to fine dining restaurants at ground floor level
- Easy access to the largest marina in the Gulf
- Easy access to Dubai Harbour Yacht Club



SOAK UP THE
GOOD LIFE







WHATEVER/ WHENEVER©

Residence owners have an unparalleled range of services, alongside the world-class amenities on offer. These include the signature Whatever/Whenever© 24-hour concierge service, valet parking, high-

speed internet access and much more. Living at W Residences at Dubai Harbour means being part of an exclusive group of creative fellow residents, with a wide range of social and networking facilities allowing for easy connections.

BENEFITS WITH ONVIA An Exclusive Platform for Residence Owners

The Residences offer a lifestyle experience that goes well beyond what you've ever imagined. Rooted in the fine art of hospitality, ONVIA provides a unique point of view on residential living, amenities, experiences, and more – each one designed to take you beyond your imagination.

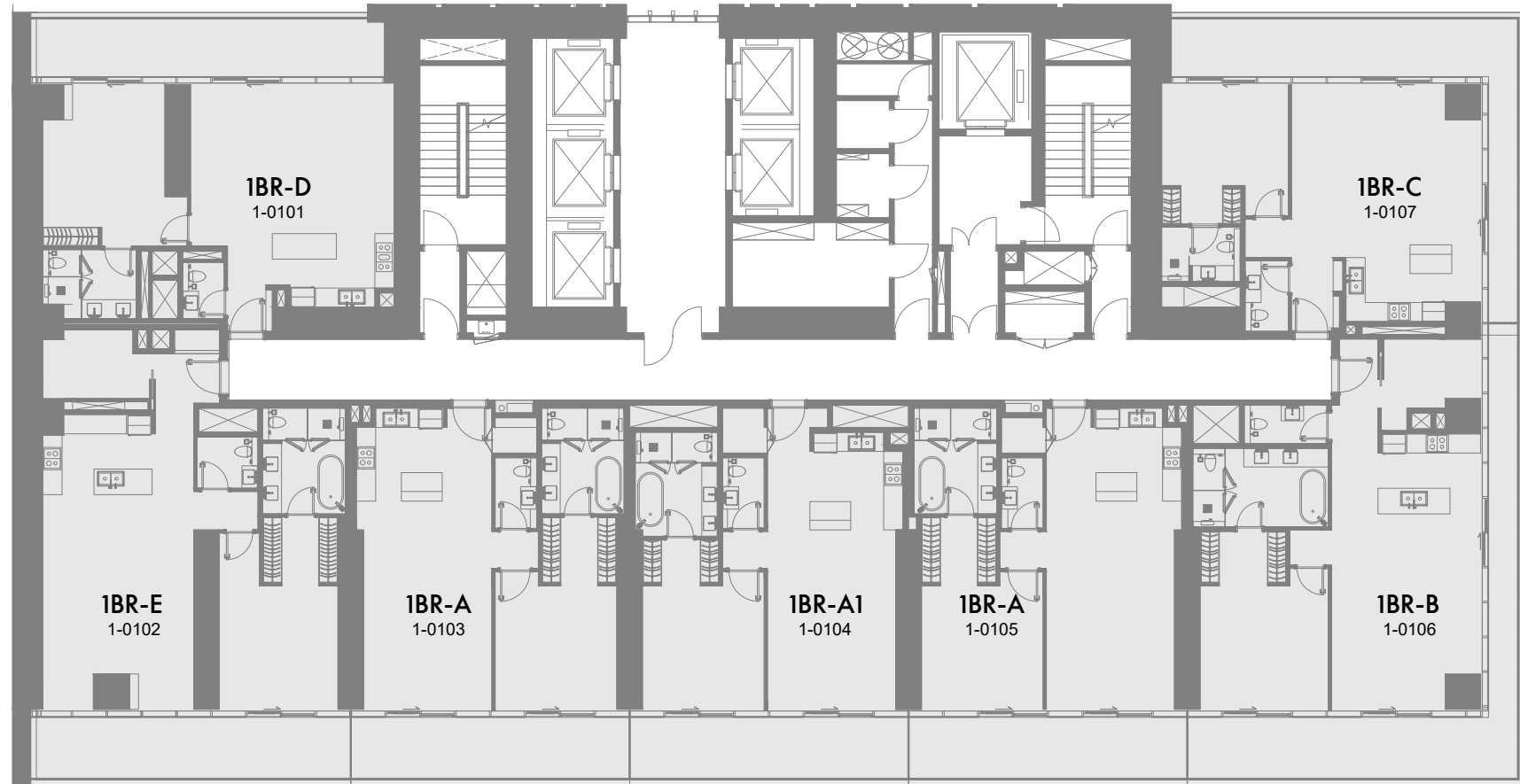
- Elevated Marriott Bonvoy loyalty status for Residence Owners
- Preferred Residence Owner rates for select hotels within the global Marriott Bonvoy portfolio
- Special offerings and preferred access on voyages with The Ritz-Carlton Yacht Collection
- Exclusive offers on culinary experiences when at home and within the local community
- A focus on wellness, including spa and treatment offerings
- Access to a world-class accredited concierge service



FLOOR PLANS



1st & 2nd Floor Plan



1 Bedroom 2 Bedrooms 2 Bedrooms Duplex 3 Bedrooms 3 Bedrooms Duplex 4 Bedrooms 4 Bedrooms Duplex 5 Bedrooms Penthouse 5 Bedrooms Penthouse

1-Measurements are indicative 'finish to finish' in Metric & Imperial excluding construction tolerance. 2-Plot/unit dimensions may vary from brochure, and unit types/plans may exist as mirrored versions; 3-All images used are for illustrative purposes only. 4-Unless stated otherwise, all fittings and interior decorative items shown are for illustrative purposes only. 5-The developer reserves the right to make alterations, at its absolute discretion, without any liability whatsoever up to the final 'as built' status.

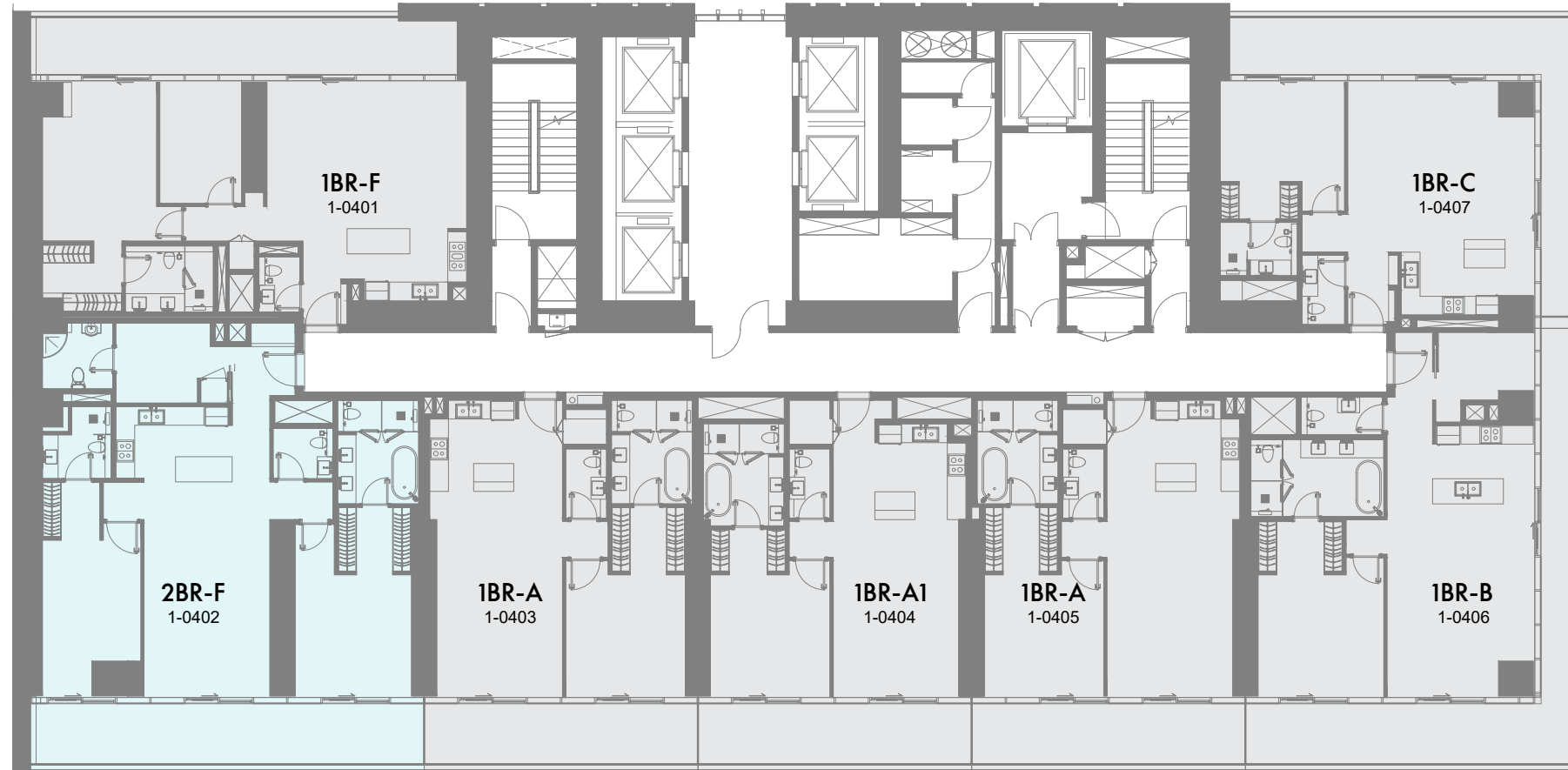
3rd Floor Plan



1 Bedroom 2 Bedrooms 2 Bedrooms Duplex 3 Bedrooms 3 Bedrooms Duplex 4 Bedrooms 4 Bedrooms Duplex 5 Bedrooms Penthouse 5 Bedrooms Penthouse

1-Measurements are indicative 'finish to finish' in Metric & Imperial excluding construction tolerance. 2-Plot/unit dimensions may vary from brochure, and unit types/plans may exist as mirrored versions; 3-All images used are for illustrative purposes only. 4-Unless stated otherwise, all fittings and interior decorative items shown are for illustrative purposes only. 5-The developer reserves the right to make alterations, at its absolute discretion, without any liability whatsoever up to the final 'as built' status.

4th Floor Plan



1 Bedroom 2 Bedrooms 2 Bedrooms Duplex 3 Bedrooms 3 Bedrooms Duplex 4 Bedrooms 4 Bedrooms Duplex 5 Bedrooms Penthouse 5 Bedrooms Penthouse

1-Measurements are indicative 'finish to finish' in Metric & Imperial excluding construction tolerance. 2-Plot/unit dimensions may vary from brochure, and unit types/plans may exist as mirrored versions; 3-All images used are for illustrative purposes only. 4-Unless stated otherwise, all fittings and interior decorative items shown are for illustrative purposes only. 5-The developer reserves the right to make alterations, at its absolute discretion, without any liability whatsoever up to the final 'as built' status.

5th to 7th Floor Plan

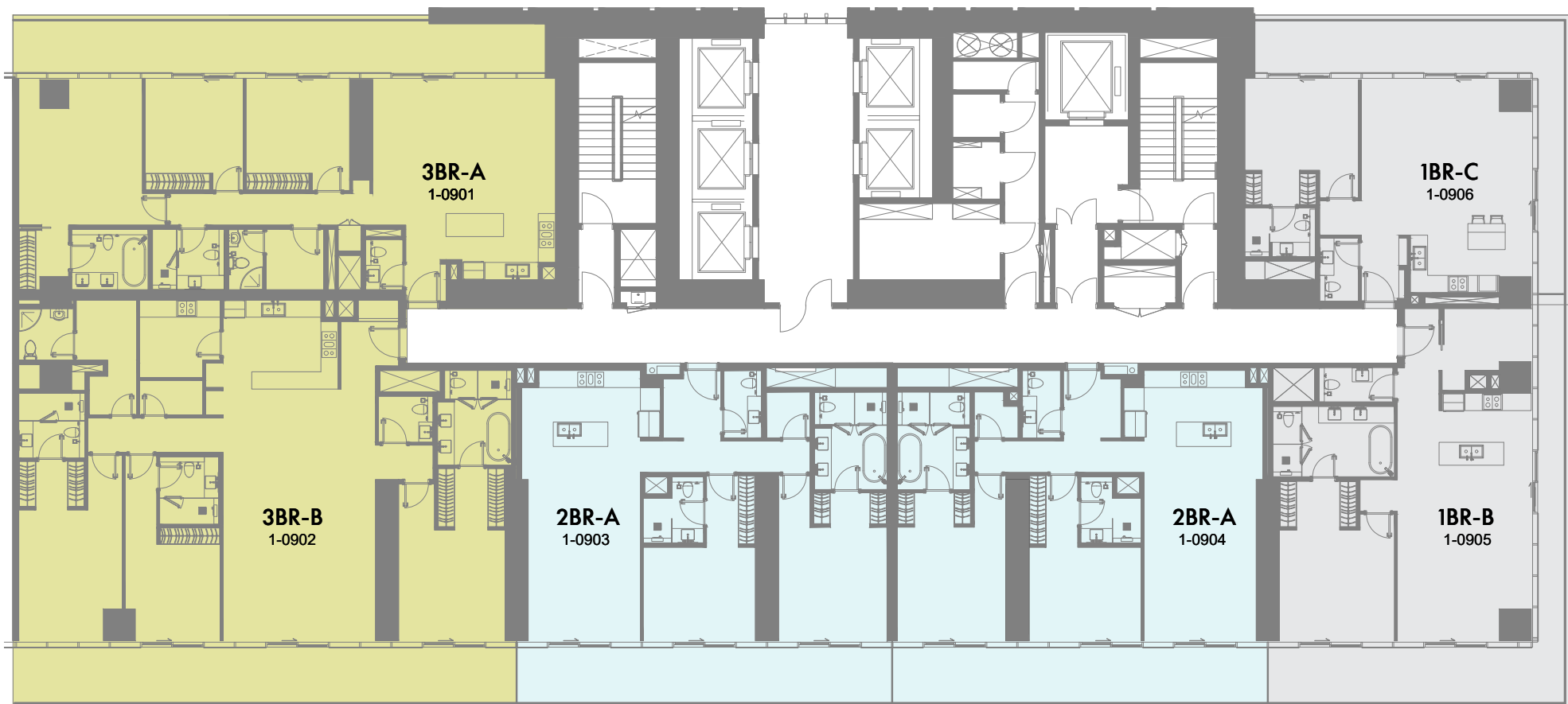
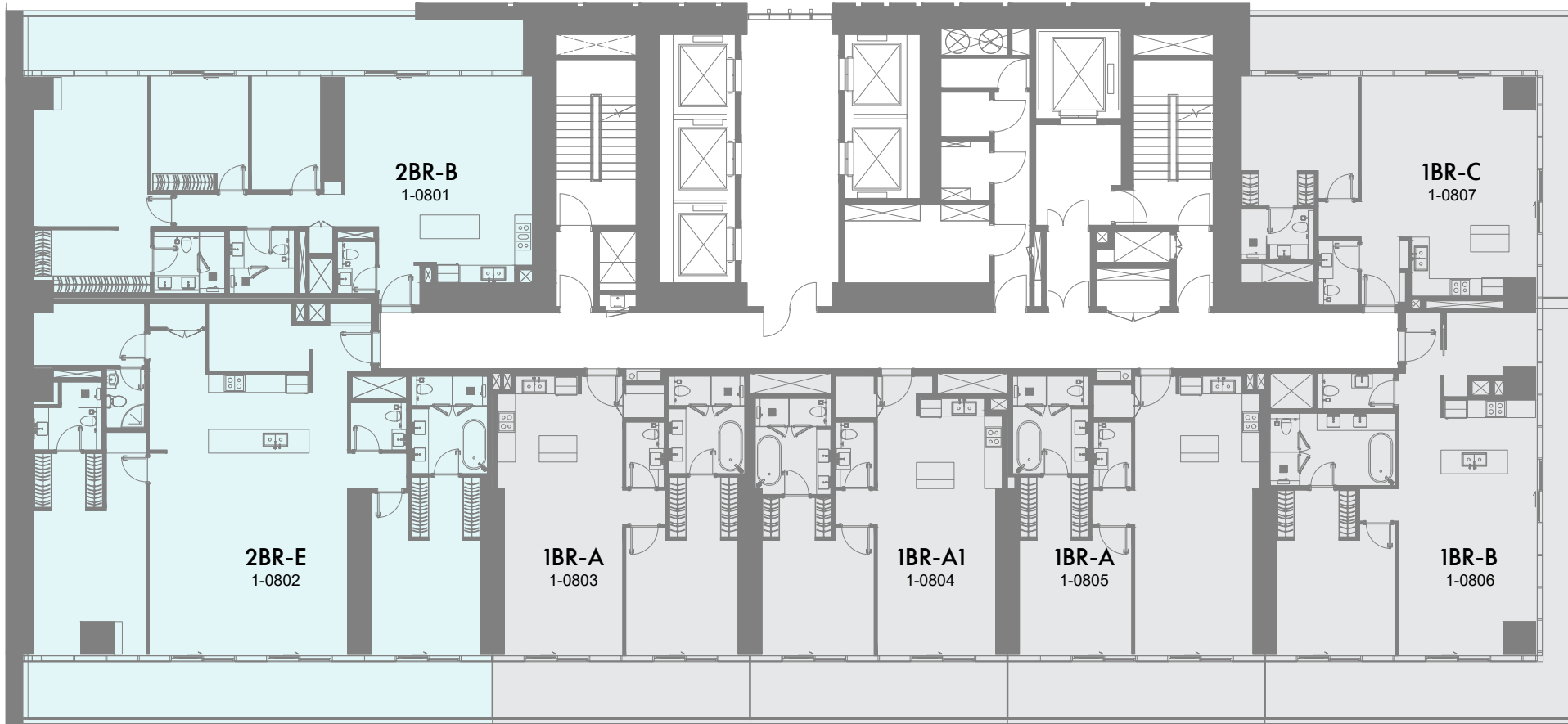


1 Bedroom 2 Bedrooms 2 Bedrooms Duplex 3 Bedrooms 3 Bedrooms Duplex 4 Bedrooms 4 Bedrooms Duplex 5 Bedrooms Penthouse 5 Bedrooms Penthouse

1-Measurements are indicative 'finish to finish' in Metric & Imperial excluding construction tolerance. 2-Plot/unit dimensions may vary from brochure, and unit types/plans may exist as mirrored versions; 3-All images used are for illustrative purposes only. 4-Unless stated otherwise, all fittings and interior decorative items shown are for illustrative purposes only. 5-The developer reserves the right to make alterations, at its absolute discretion, without any liability whatsoever up to the final 'as built' status.

8th Floor Plan

9th Floor Plan



1 Bedroom 2 Bedrooms 2 Bedrooms Duplex 3 Bedrooms 3 Bedrooms Duplex 4 Bedrooms 4 Bedrooms Duplex 5 Bedrooms Penthouse 5 Bedrooms Penthouse

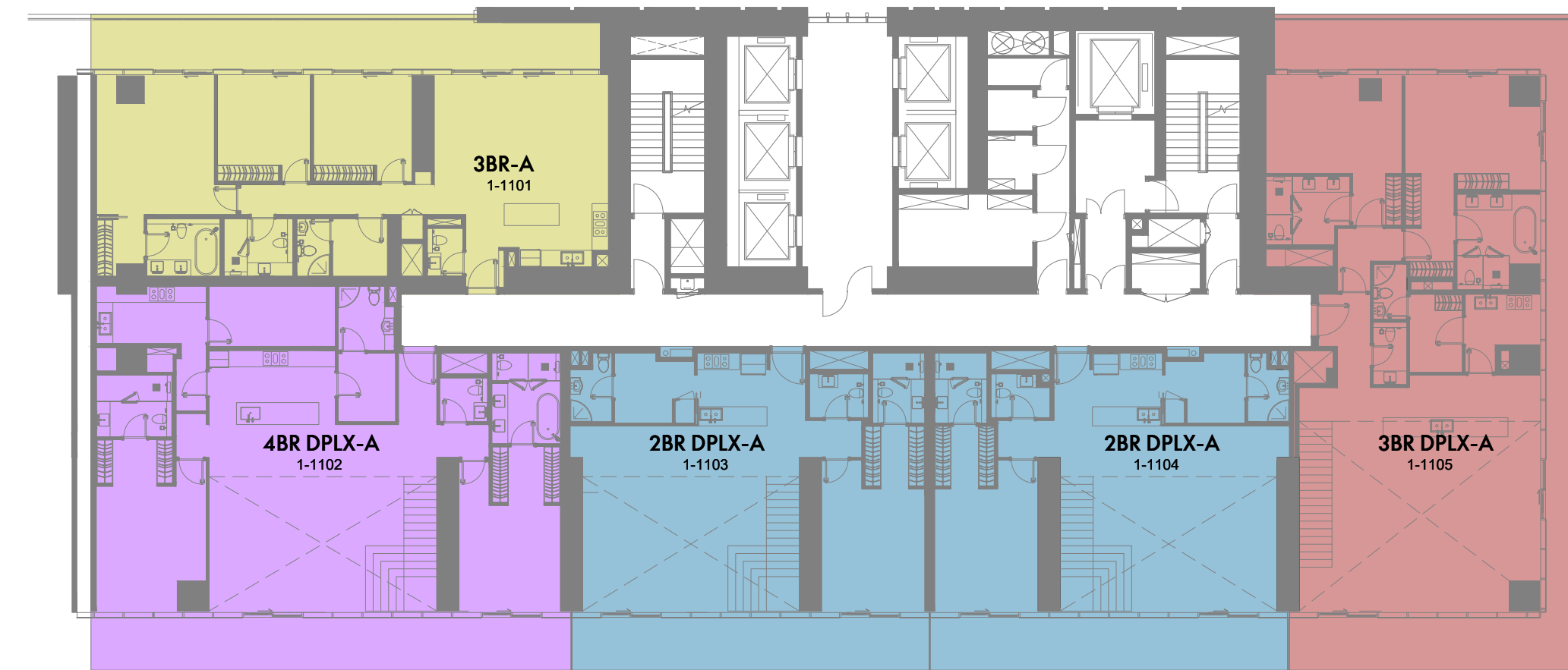
1 Bedroom 2 Bedrooms 2 Bedrooms Duplex 3 Bedrooms 3 Bedrooms Duplex 4 Bedrooms 4 Bedrooms Duplex 5 Bedrooms Penthouse 5 Bedrooms Penthouse

1-Measurements are indicative 'finish to finish' in Metric & Imperial excluding construction tolerance. 2-Plot/unit dimensions may vary from brochure, and unit types/plans may exist as mirrored versions; 3-All images used are for illustrative purposes only. 4-Unless stated otherwise, all fittings and interior decorative items shown are for illustrative purposes only. 5-The developer reserves the right to make alterations, at its absolute discretion, without any liability whatsoever up to the final 'as built' status.

1-Measurements are indicative 'finish to finish' in Metric & Imperial excluding construction tolerance. 2-Plot/unit dimensions may vary from brochure, and unit types/plans may exist as mirrored versions; 3-All images used are for illustrative purposes only. 4-Unless stated otherwise, all fittings and interior decorative items shown are for illustrative purposes only. 5-The developer reserves the right to make alterations, at its absolute discretion, without any liability whatsoever up to the final 'as built' status.

10th Floor Plan

11th Floor Plan



1 Bedroom 2 Bedrooms 2 Bedrooms Duplex 3 Bedrooms 3 Bedrooms Duplex 4 Bedrooms 4 Bedrooms Duplex 5 Bedrooms Penthouse 5 Bedrooms Penthouse

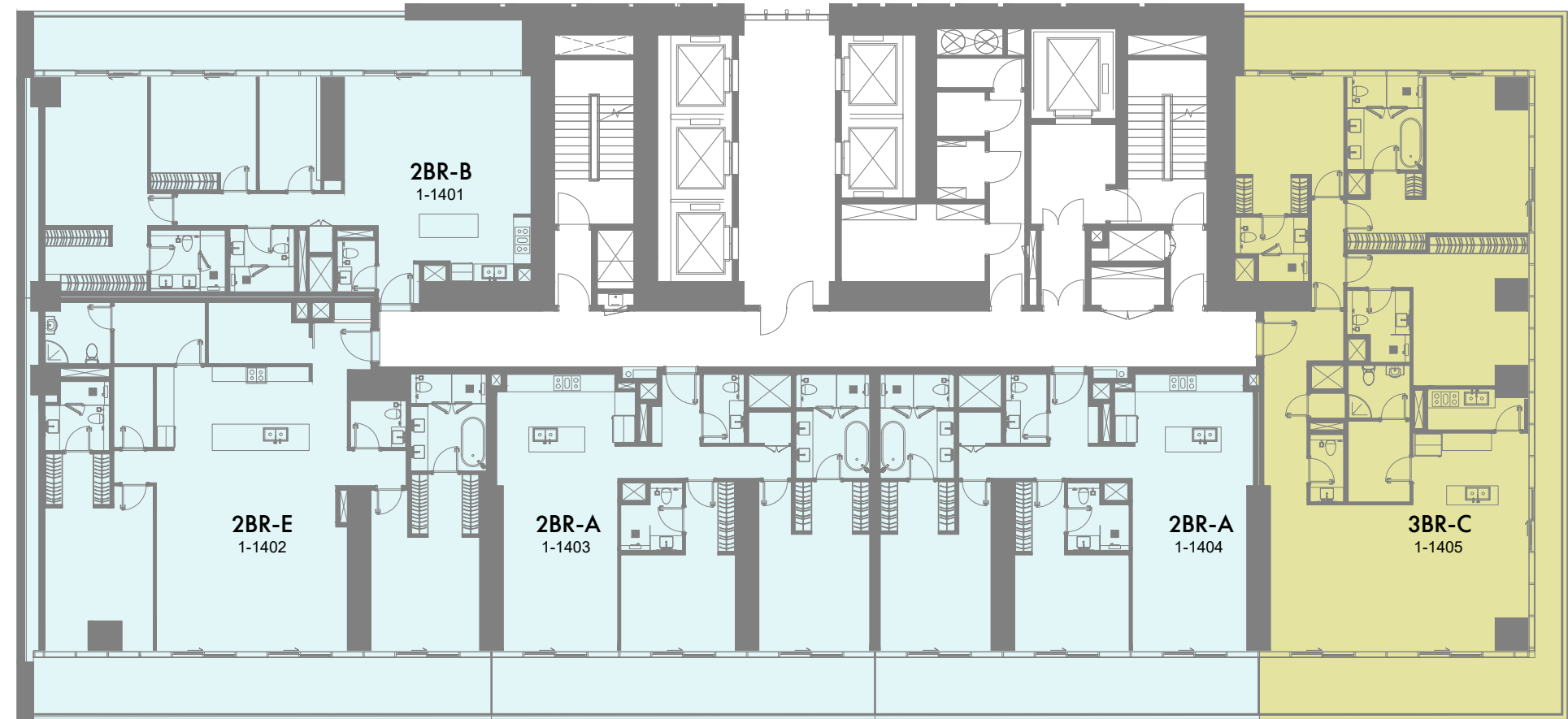
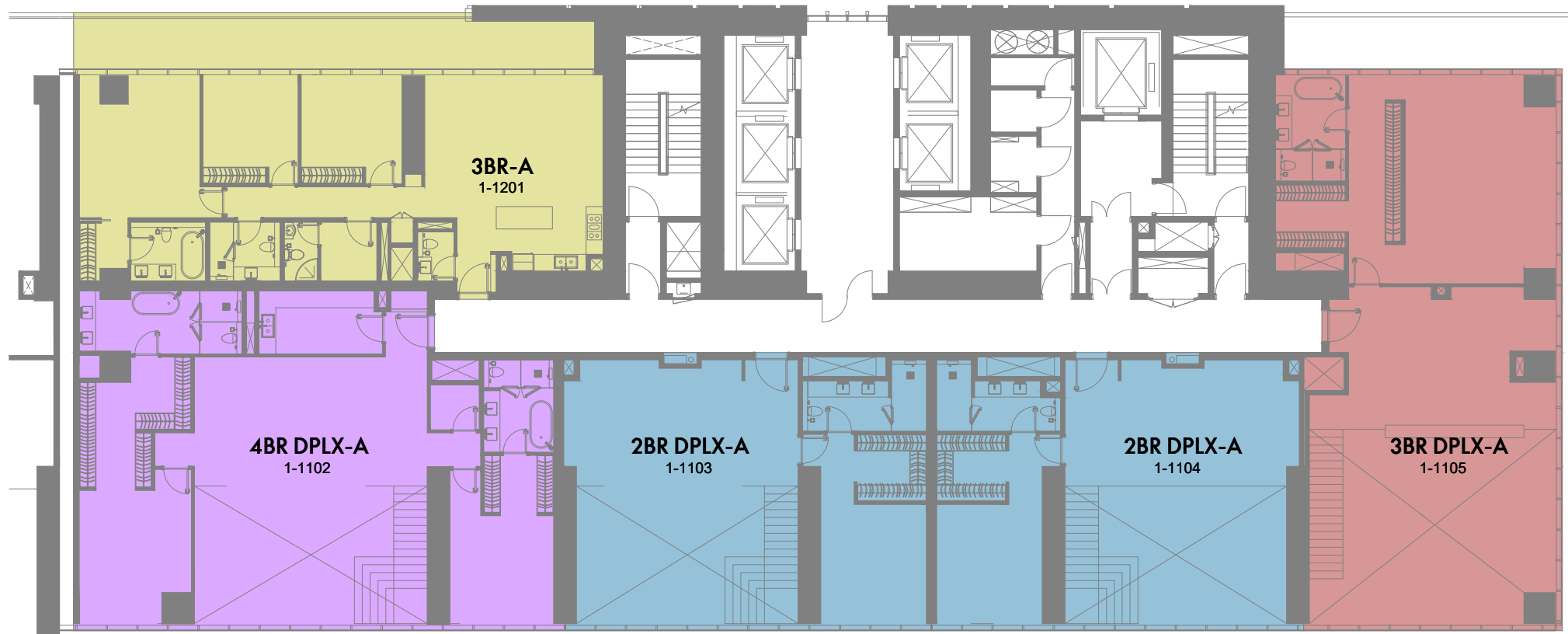
1 Bedroom 2 Bedrooms 2 Bedrooms Duplex 3 Bedrooms 3 Bedrooms Duplex 4 Bedrooms 4 Bedrooms Duplex 5 Bedrooms Penthouse 5 Bedrooms Penthouse

1-Measurements are indicative 'finish to finish' in Metric & Imperial excluding construction tolerance. 2-Plot/unit dimensions may vary from brochure, and unit types/plans may exist as mirrored versions; 3-All images used are for illustrative purposes only. 4-Unless stated otherwise, all fittings and interior decorative items shown are for illustrative purposes only. 5-The developer reserves the right to make alterations, at its absolute discretion, without any liability whatsoever up to the final 'as built' status.

1-Measurements are indicative 'finish to finish' in Metric & Imperial excluding construction tolerance. 2-Plot/unit dimensions may vary from brochure, and unit types/plans may exist as mirrored versions; 3-All images used are for illustrative purposes only. 4-Unless stated otherwise, all fittings and interior decorative items shown are for illustrative purposes only. 5-The developer reserves the right to make alterations, at its absolute discretion, without any liability whatsoever up to the final 'as built' status.

12th Floor Plan

14th Floor Plan



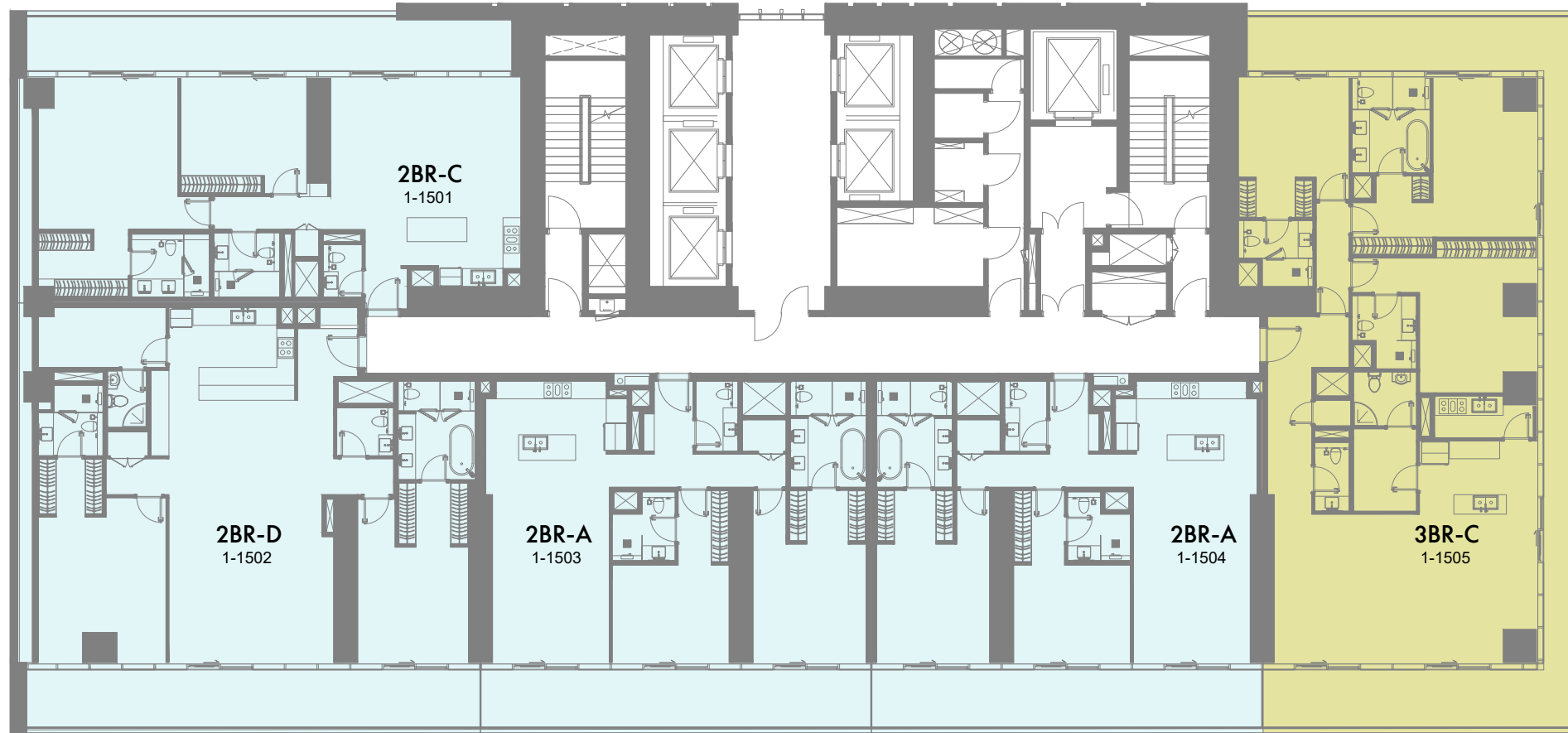
1 Bedroom 2 Bedrooms 2 Bedrooms Duplex 3 Bedrooms 3 Bedrooms Duplex 4 Bedrooms 4 Bedrooms Duplex 5 Bedrooms Penthouse 5 Bedrooms Penthouse

1 Bedroom 2 Bedrooms 2 Bedrooms Duplex 3 Bedrooms 3 Bedrooms Duplex 4 Bedrooms 4 Bedrooms Duplex 5 Bedrooms Penthouse 5 Bedrooms Penthouse

1-Measurements are indicative 'finish to finish' in Metric & Imperial excluding construction tolerance. 2-Plot/unit dimensions may vary from brochure, and unit types/plans may exist as mirrored versions; 3-All images used are for illustrative purposes only. 4-Unless stated otherwise, all fittings and interior decorative items shown are for illustrative purposes only. 5-The developer reserves the right to make alterations, at its absolute discretion, without any liability whatsoever up to the final 'as built' status.

1-Measurements are indicative 'finish to finish' in Metric & Imperial excluding construction tolerance. 2-Plot/unit dimensions may vary from brochure, and unit types/plans may exist as mirrored versions; 3-All images used are for illustrative purposes only. 4-Unless stated otherwise, all fittings and interior decorative items shown are for illustrative purposes only. 5-The developer reserves the right to make alterations, at its absolute discretion, without any liability whatsoever up to the final 'as built' status.

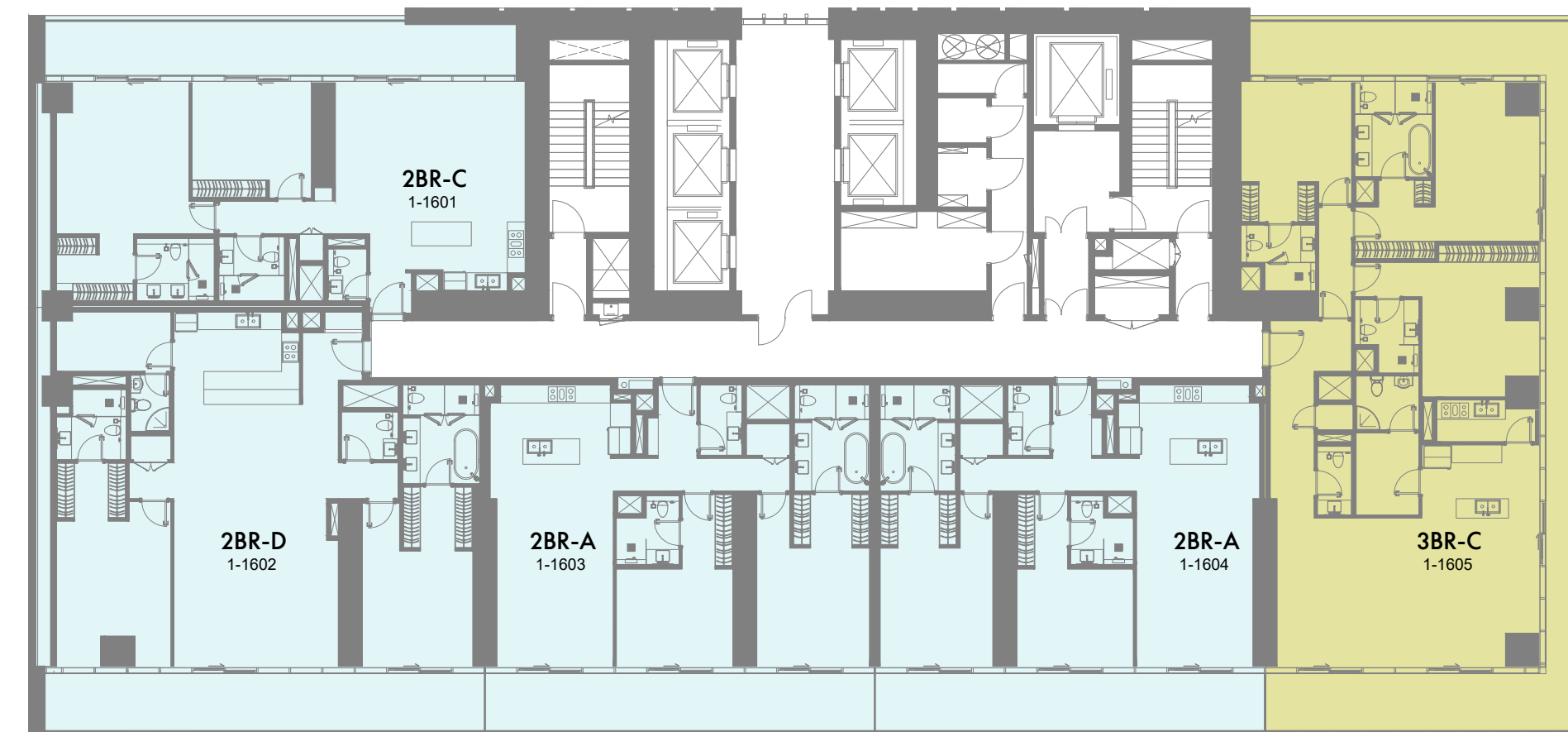
15th Floor Plan



1 Bedroom
 2 Bedrooms
 2 Bedrooms Duplex
 3 Bedrooms
 3 Bedrooms Duplex
 4 Bedrooms
 4 Bedrooms Duplex
 5 Bedrooms Penthouse
 5 Bedrooms Penthouse

1-Measurements are indicative 'finish to finish' in Metric & Imperial excluding construction tolerance. 2-Plot/unit dimensions may vary from brochure, and unit types/plans may exist as mirrored versions; 3-All images used are for illustrative purposes only. 4-Unless stated otherwise, all fittings and interior decorative items shown are for illustrative purposes only. 5-The developer reserves the right to make alterations, at its absolute discretion, without any liability whatsoever up to the final 'as built' status.

16th to 20th Floor Plan

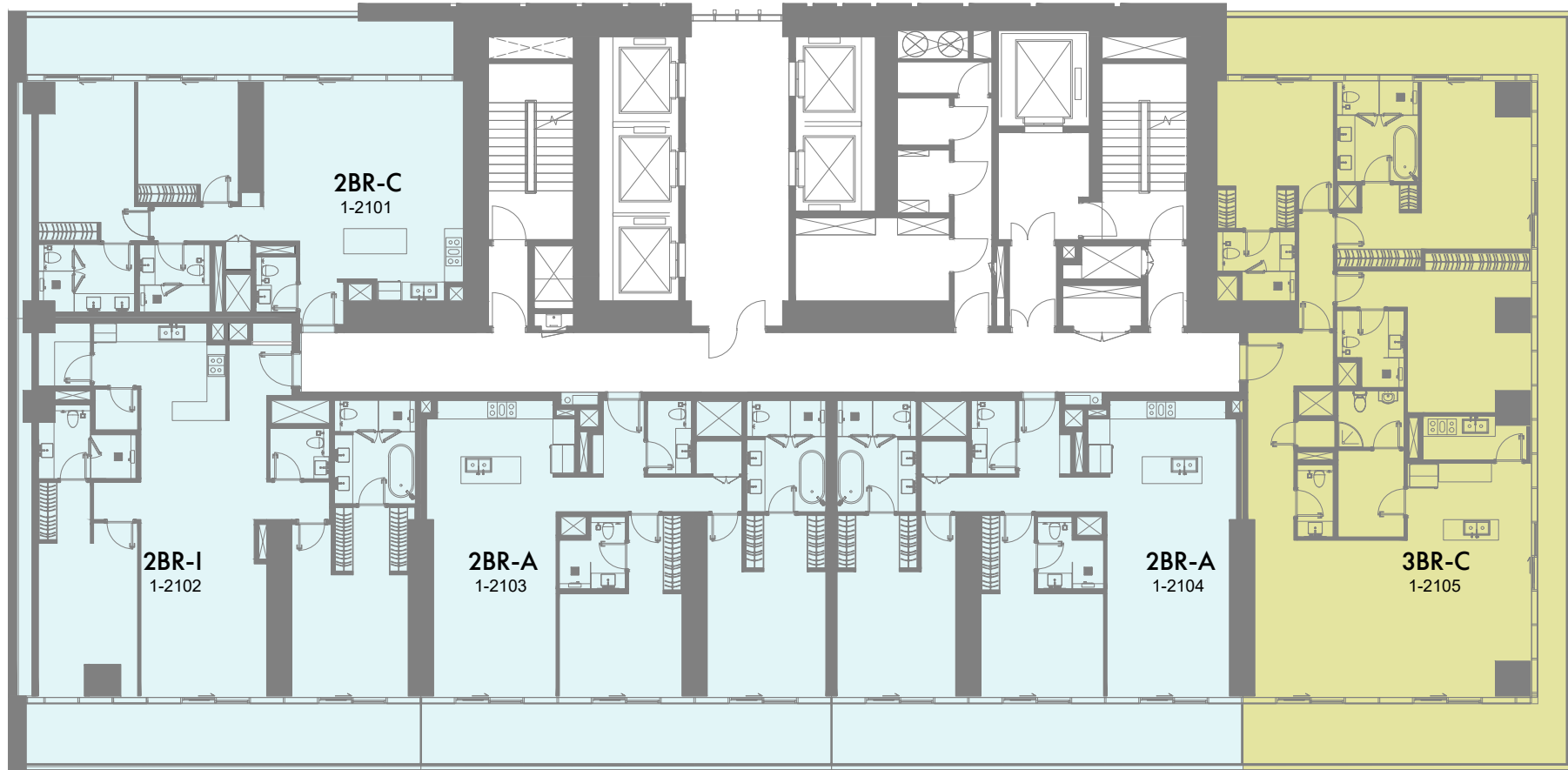


1 Bedroom
 2 Bedrooms
 2 Bedrooms Duplex
 3 Bedrooms
 3 Bedrooms Duplex
 4 Bedrooms
 4 Bedrooms Duplex
 5 Bedrooms Penthouse
 5 Bedrooms Penthouse

1-Measurements are indicative 'finish to finish' in Metric & Imperial excluding construction tolerance. 2-Plot/unit dimensions may vary from brochure, and unit types/plans may exist as mirrored versions; 3-All images used are for illustrative purposes only. 4-Unless stated otherwise, all fittings and interior decorative items shown are for illustrative purposes only. 5-The developer reserves the right to make alterations, at its absolute discretion, without any liability whatsoever up to the final 'as built' status.

21st Floor Plan

22nd Floor Plan



1 Bedroom 2 Bedrooms 2 Bedrooms Duplex 3 Bedrooms 3 Bedrooms Duplex 4 Bedrooms 4 Bedrooms Duplex 5 Bedrooms Penthouse 5 Bedrooms Penthouse

1 Bedroom 2 Bedrooms 2 Bedrooms Duplex 3 Bedrooms 3 Bedrooms Duplex 4 Bedrooms 4 Bedrooms Duplex 5 Bedrooms Penthouse 5 Bedrooms Penthouse

1-Measurements are indicative 'finish to finish' in Metric & Imperial excluding construction tolerance. 2-Plot/unit dimensions may vary from brochure, and unit types/plans may exist as mirrored versions; 3-All images used are for illustrative purposes only. 4-Unless stated otherwise, all fittings and interior decorative items shown are for illustrative purposes only. 5-The developer reserves the right to make alterations, at its absolute discretion, without any liability whatsoever up to the final 'as built' status.

1-Measurements are indicative 'finish to finish' in Metric & Imperial excluding construction tolerance. 2-Plot/unit dimensions may vary from brochure, and unit types/plans may exist as mirrored versions; 3-All images used are for illustrative purposes only. 4-Unless stated otherwise, all fittings and interior decorative items shown are for illustrative purposes only. 5-The developer reserves the right to make alterations, at its absolute discretion, without any liability whatsoever up to the final 'as built' status.

23rd to 27th Floor Plan



1 Bedroom 2 Bedrooms 2 Bedrooms Duplex 3 Bedrooms 3 Bedrooms Duplex 4 Bedrooms 4 Bedrooms Duplex 5 Bedrooms Penthouse 5 Bedrooms Penthouse

1-Measurements are indicative 'finish to finish' in Metric & Imperial excluding construction tolerance. 2-Plot/unit dimensions may vary from brochure, and unit types/plans may exist as mirrored versions; 3-All images used are for illustrative purposes only. 4-Unless stated otherwise, all fittings and interior decorative items shown are for illustrative purposes only. 5-The developer reserves the right to make alterations, at its absolute discretion, without any liability whatsoever up to the final 'as built' status.

29th Floor Plan



1 Bedroom 2 Bedrooms 2 Bedrooms Duplex 3 Bedrooms 3 Bedrooms Duplex 4 Bedrooms 4 Bedrooms Duplex 5 Bedrooms Penthouse 5 Bedrooms Penthouse

1-Measurements are indicative 'finish to finish' in Metric & Imperial excluding construction tolerance. 2-Plot/unit dimensions may vary from brochure, and unit types/plans may exist as mirrored versions; 3-All images used are for illustrative purposes only. 4-Unless stated otherwise, all fittings and interior decorative items shown are for illustrative purposes only. 5-The developer reserves the right to make alterations, at its absolute discretion, without any liability whatsoever up to the final 'as built' status.

30th to 31st and 33rd Floor Plan



1 Bedroom
 2 Bedrooms
 2 Bedrooms Duplex
 3 Bedrooms
 3 Bedrooms Duplex
 4 Bedrooms
 4 Bedrooms Duplex
 5 Bedrooms Penthouse
 5 Bedrooms Penthouse

1-Measurements are indicative 'finish to finish' in Metric & Imperial excluding construction tolerance. 2-Plot/unit dimensions may vary from brochure, and unit types/plans may exist as mirrored versions; 3-All images used are for illustrative purposes only. 4-Unless stated otherwise, all fittings and interior decorative items shown are for illustrative purposes only. 5-The developer reserves the right to make alterations, at its absolute discretion, without any liability whatsoever up to the final 'as built' status.

32nd Floor Plan



1 Bedroom
 2 Bedrooms
 2 Bedrooms Duplex
 3 Bedrooms
 3 Bedrooms Duplex
 4 Bedrooms
 4 Bedrooms Duplex
 5 Bedrooms Penthouse
 5 Bedrooms Penthouse

1-Measurements are indicative 'finish to finish' in Metric & Imperial excluding construction tolerance. 2-Plot/unit dimensions may vary from brochure, and unit types/plans may exist as mirrored versions; 3-All images used are for illustrative purposes only. 4-Unless stated otherwise, all fittings and interior decorative items shown are for illustrative purposes only. 5-The developer reserves the right to make alterations, at its absolute discretion, without any liability whatsoever up to the final 'as built' status.

34th to 36th Floor Plan



37th to 40th Floor Plan



1 Bedroom
 2 Bedrooms
 2 Bedrooms Duplex
 3 Bedrooms
 3 Bedrooms Duplex
 4 Bedrooms
 4 Bedrooms Duplex
 5 Bedrooms Penthouse
 5 Bedrooms Penthouse

1-Measurements are indicative 'finish to finish' in Metric & Imperial excluding construction tolerance. 2-Plot/unit dimensions may vary from brochure, and unit types/plans may exist as mirrored versions; 3-All images used are for illustrative purposes only. 4-Unless stated otherwise, all fittings and interior decorative items shown are for illustrative purposes only. 5-The developer reserves the right to make alterations, at its absolute discretion, without any liability whatsoever up to the final 'as built' status.

1 Bedroom
 2 Bedrooms
 2 Bedrooms Duplex
 3 Bedrooms
 3 Bedrooms Duplex
 4 Bedrooms
 4 Bedrooms Duplex
 5 Bedrooms Penthouse
 5 Bedrooms Penthouse

1-Measurements are indicative 'finish to finish' in Metric & Imperial excluding construction tolerance. 2-Plot/unit dimensions may vary from brochure, and unit types/plans may exist as mirrored versions; 3-All images used are for illustrative purposes only. 4-Unless stated otherwise, all fittings and interior decorative items shown are for illustrative purposes only. 5-The developer reserves the right to make alterations, at its absolute discretion, without any liability whatsoever up to the final 'as built' status.

41st Presidential Suite Floor Plan



1 Bedroom
 2 Bedrooms
 2 Bedrooms Duplex
 3 Bedrooms
 3 Bedrooms Duplex
 4 Bedrooms
 4 Bedrooms Duplex
 5 Bedrooms Penthouse
 5 Bedrooms Penthouse

1-Measurements are indicative 'finish to finish' in Metric & Imperial excluding construction tolerance. 2-Plot/unit dimensions may vary from brochure, and unit types/plans may exist as mirrored versions; 3-All images used are for illustrative purposes only. 4-Unless stated otherwise, all fittings and interior decorative items shown are for illustrative purposes only. 5-The developer reserves the right to make alterations, at its absolute discretion, without any liability whatsoever up to the final 'as built' status.

Presidential Suite Roof Top Floor Plan

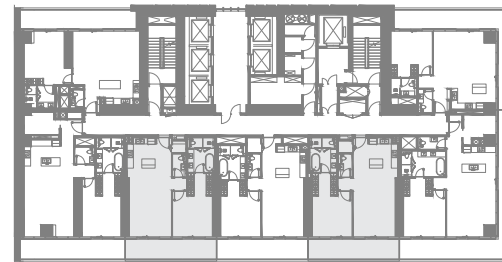
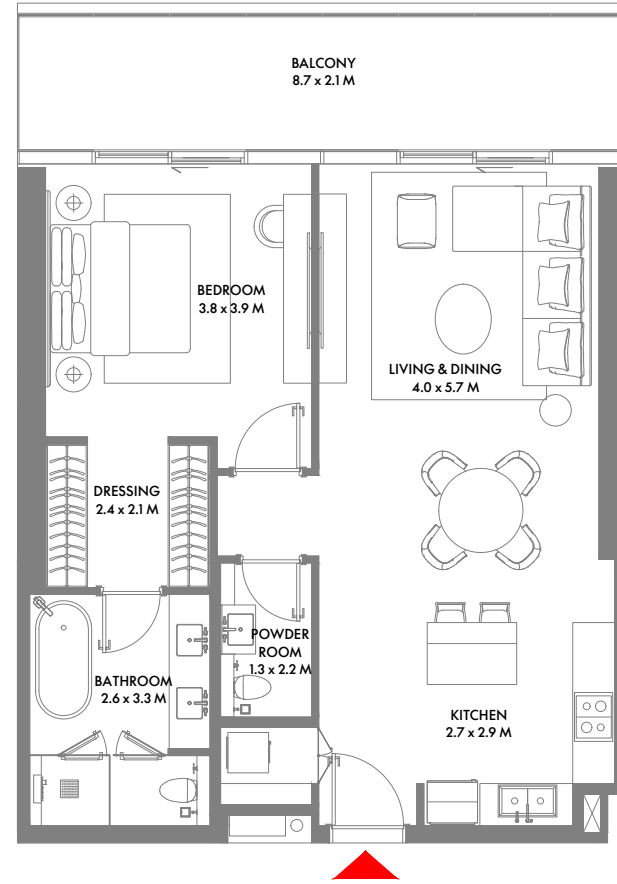


1 Bedroom
 2 Bedrooms
 2 Bedrooms Duplex
 3 Bedrooms
 3 Bedrooms Duplex
 4 Bedrooms
 4 Bedrooms Duplex
 5 Bedrooms Penthouse
 5 Bedrooms Penthouse

1-Measurements are indicative 'finish to finish' in Metric & Imperial excluding construction tolerance. 2-Plot/unit dimensions may vary from brochure, and unit types/plans may exist as mirrored versions; 3-All images used are for illustrative purposes only. 4-Unless stated otherwise, all fittings and interior decorative items shown are for illustrative purposes only. 5-The developer reserves the right to make alterations, at its absolute discretion, without any liability whatsoever up to the final 'as built' status.

UNIT PLANS



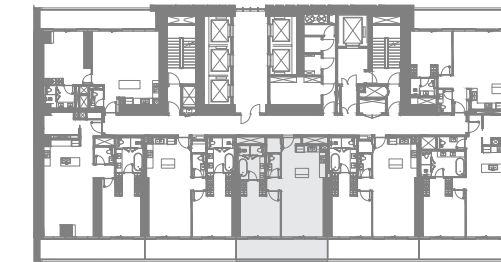
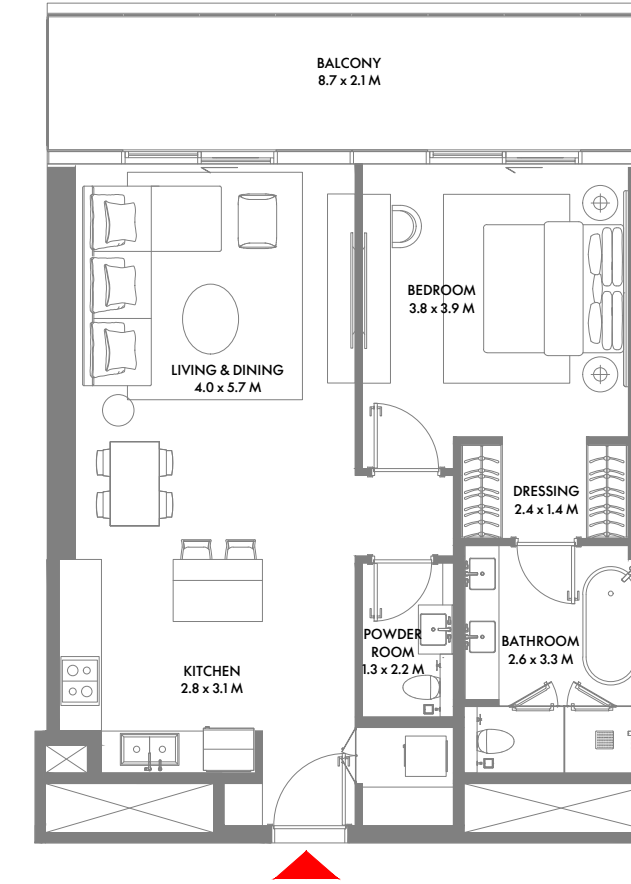


1ST TO 8TH FLOOR

1 Bedroom A

Unit Area: 83.56 Sqm (900 Sqft) | Balcony Area: 17.28 Sqm (186 Sqft) | Total Area: 100.84 Sqm (1,086 Sqft)

1-Measurements are indicative 'finish to finish' in Metric & Imperial excluding construction tolerance. 2-Plot/unit dimensions may vary from brochure, and unit types/plans may exist as mirrored versions; 3-All images used are for illustrative purposes only. 4-Unless stated otherwise, all fittings and interior decorative items shown are for illustrative purposes only. 5-The developer reserves the right to make alterations, at its absolute discretion, without any liability whatsoever up to the final 'as built' status.

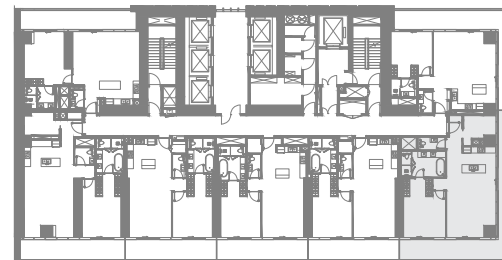
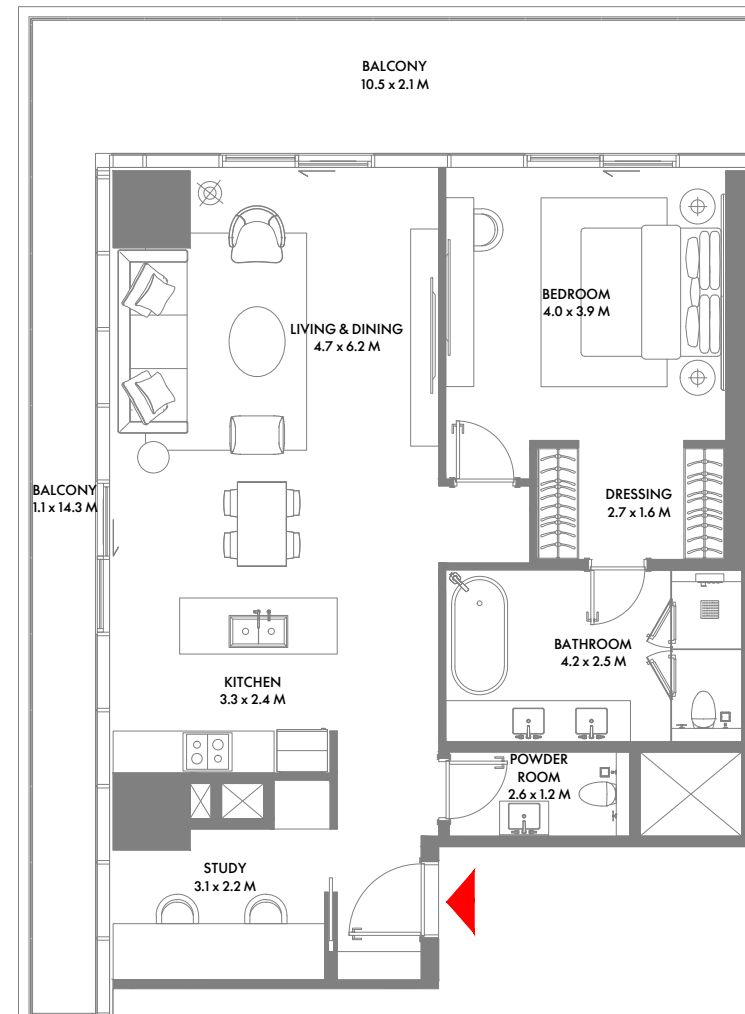


1ST TO 8TH FLOOR

1 Bedroom A1

Unit Area: 79.90 Sqm (861 Sqft) | Balcony Area: 17.28 Sqm (186 Sqft) | Total Area: 97.18 Sqm (1,047 Sqft)

1-Measurements are indicative 'finish to finish' in Metric & Imperial excluding construction tolerance. 2-Plot/unit dimensions may vary from brochure, and unit types/plans may exist as mirrored versions; 3-All images used are for illustrative purposes only. 4-Unless stated otherwise, all fittings and interior decorative items shown are for illustrative purposes only. 5-The developer reserves the right to make alterations, at its absolute discretion, without any liability whatsoever up to the final 'as built' status.

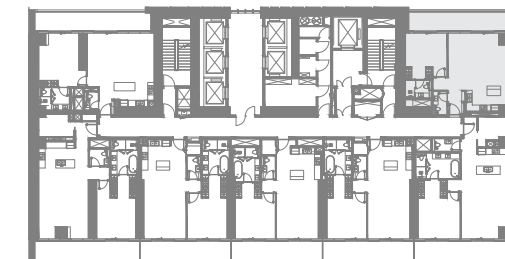
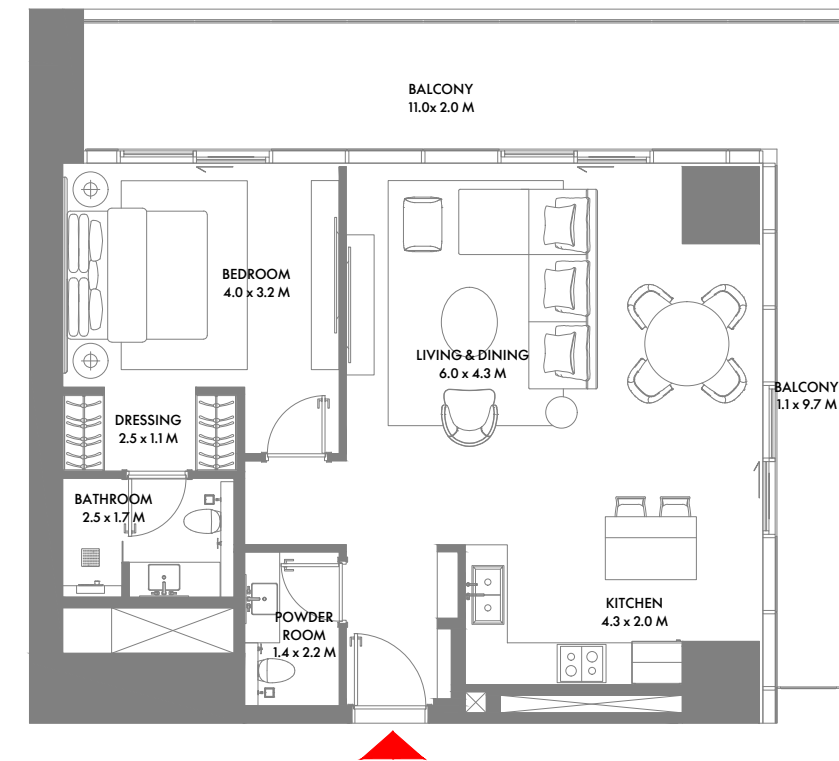


1ST TO 10TH FLOOR

1 Bedroom B

Unit Area: 98.76 Sqm (1,064 Sqft) | Balcony Area: 32.18 Sqm (346 Sqft) | Total Area: 130.94 Sqm (1,410 Sqft)

1-Measurements are indicative 'finish to finish' in Metric & Imperial excluding construction tolerance. 2-Plot/unit dimensions may vary from brochure, and unit types/plans may exist as mirrored versions; 3-All images used are for illustrative purposes only. 4-Unless stated otherwise, all fittings and interior decorative items shown are for illustrative purposes only. 5-The developer reserves the right to make alterations, at its absolute discretion, without any liability whatsoever up to the final 'as built' status.

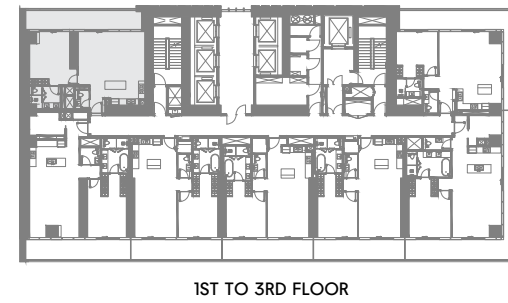
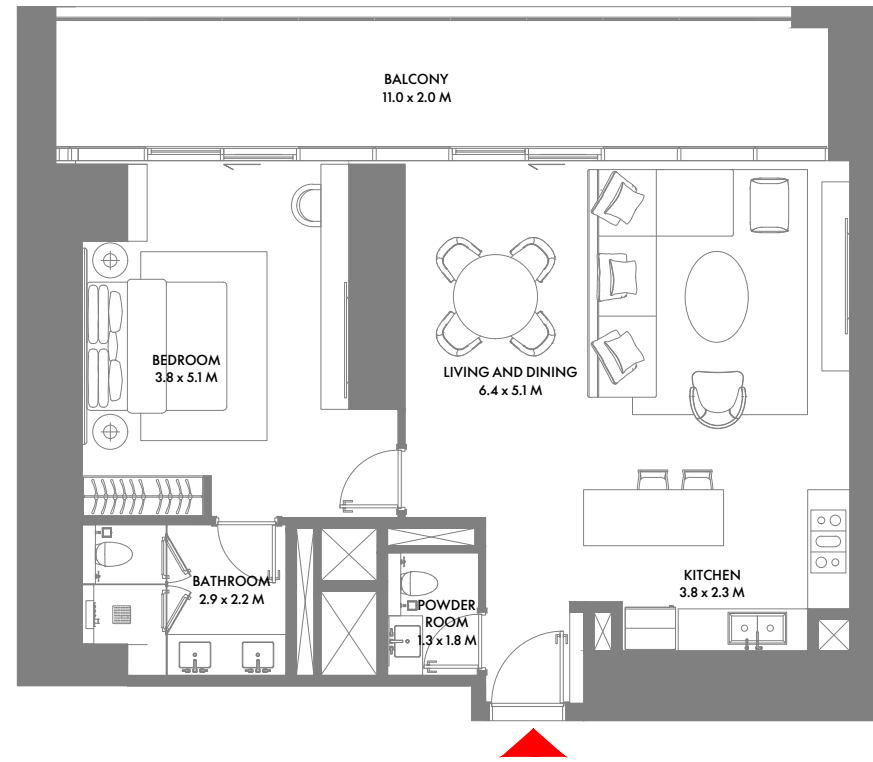


1ST TO 10TH FLOOR

1 Bedroom C

Unit Area: 78.80 Sqm (849 Sqft) | Balcony Area: 29.19 Sqm (314 Sqft) | Total Area: 107.99 Sqm (1,163 Sqft)

1-Measurements are indicative 'finish to finish' in Metric & Imperial excluding construction tolerance. 2-Plot/unit dimensions may vary from brochure, and unit types/plans may exist as mirrored versions; 3-All images used are for illustrative purposes only. 4-Unless stated otherwise, all fittings and interior decorative items shown are for illustrative purposes only. 5-The developer reserves the right to make alterations, at its absolute discretion, without any liability whatsoever up to the final 'as built' status.

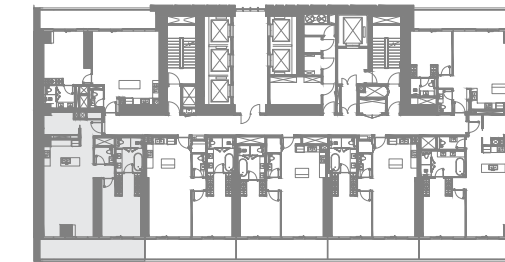
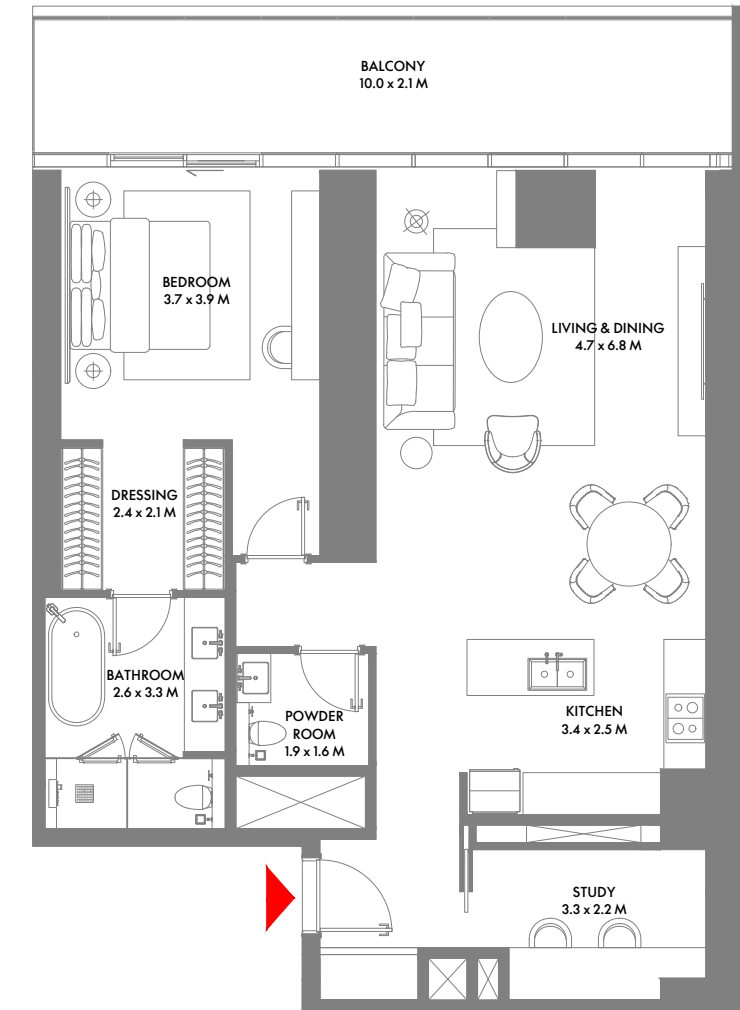


1ST TO 3RD FLOOR

1 Bedroom D

Unit Area: 97.26 Sqm (1,047 Sqft) | **Balcony Area:** 25.07 Sqm (270 Sqft) | **Total Area:** 122.33 Sqm (1,317 Sqft)

1-Measurements are indicative 'finish to finish' in Metric & Imperial excluding construction tolerance. 2-Plot/unit dimensions may vary from brochure, and unit types/plans may exist as mirrored versions; 3-All images used are for illustrative purposes only. 4-Unless stated otherwise, all fittings and interior decorative items shown are for illustrative purposes only. 5-The developer reserves the right to make alterations, at its absolute discretion, without any liability whatsoever up to the final 'as built' status.

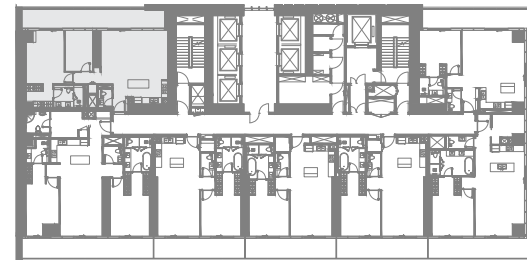
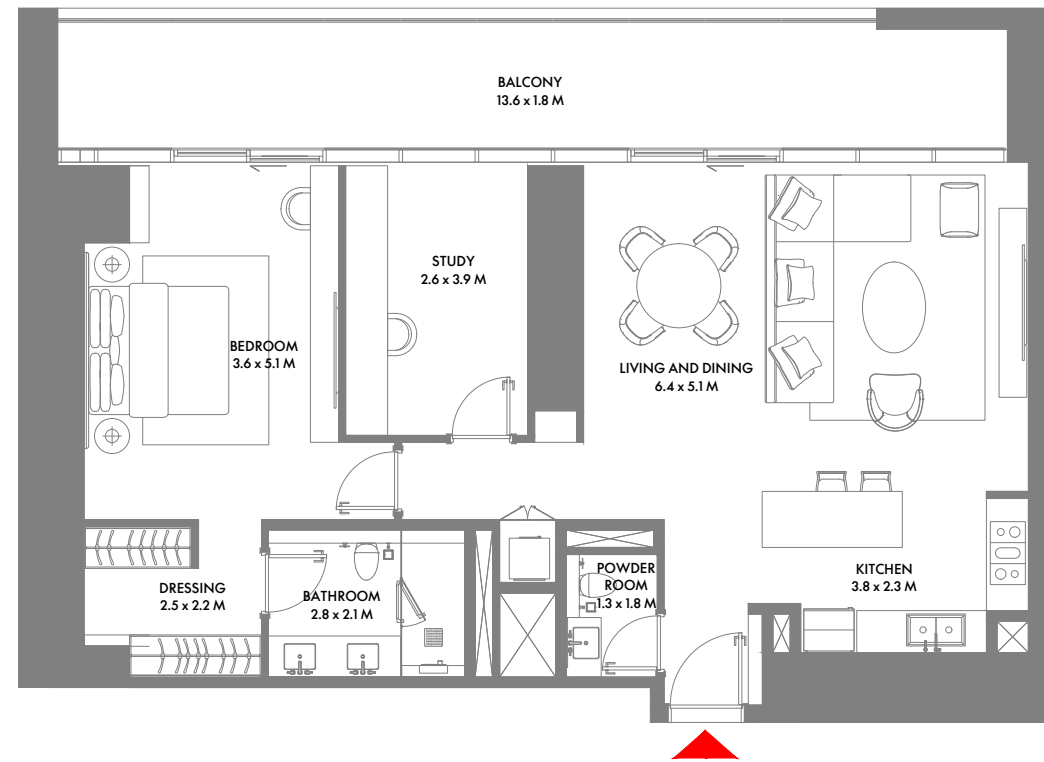


1ST & 2ND FLOOR

1 Bedroom E

Unit Area: 115.20 Sqm (1,241 Sqft) | **Balcony Area:** 21.40 Sqm (230 Sqft) | **Total Area:** 136.60 Sqm (1,471 Sqft)

1-Measurements are indicative 'finish to finish' in Metric & Imperial excluding construction tolerance. 2-Plot/unit dimensions may vary from brochure, and unit types/plans may exist as mirrored versions; 3-All images used are for illustrative purposes only. 4-Unless stated otherwise, all fittings and interior decorative items shown are for illustrative purposes only. 5-The developer reserves the right to make alterations, at its absolute discretion, without any liability whatsoever up to the final 'as built' status.

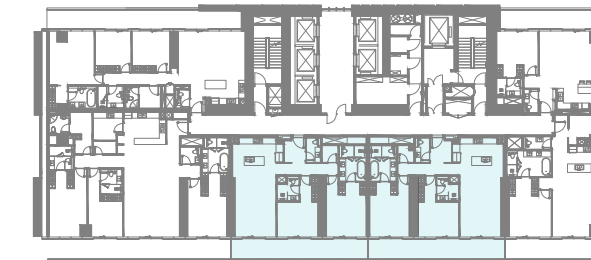
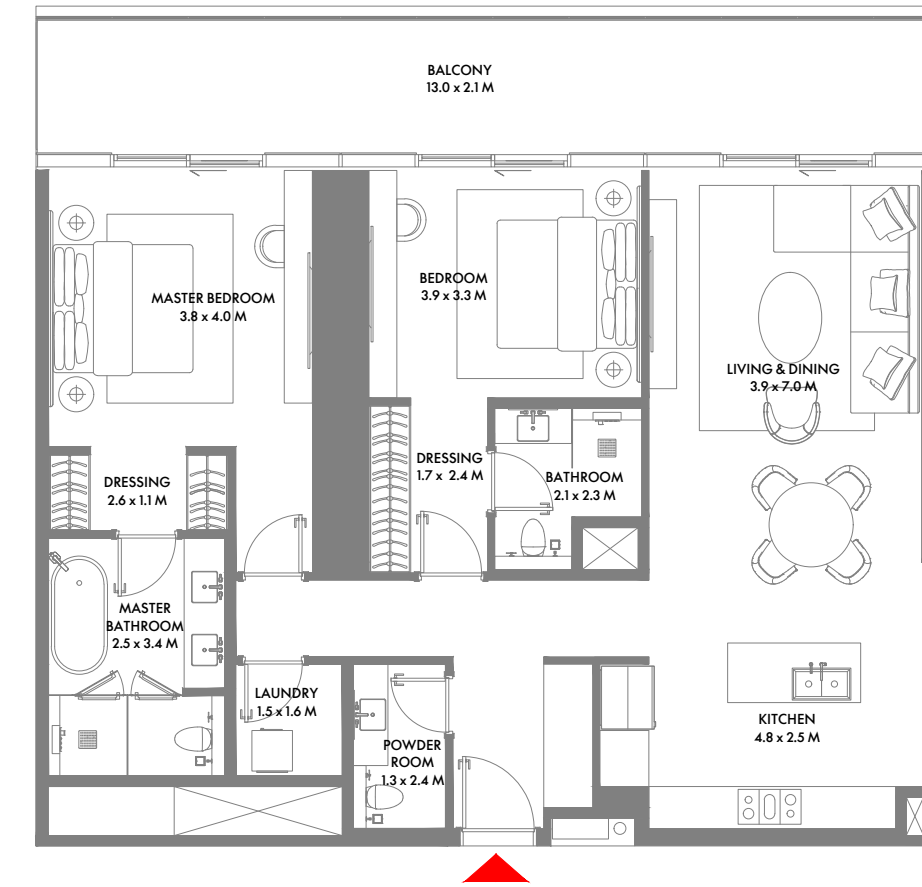


4TH & 22ND FLOOR

1 Bedroom F

Unit Area: 103.74 Sqm (1,117 Sqft) | Balcony Area: 26.62 Sqm (287 Sqft) | Total Area: 130.36 Sqm (1,404 Sqft)

1-Measurements are indicative 'finish to finish' in Metric & Imperial excluding construction tolerance. 2-Plot/unit dimensions may vary from brochure, and unit types/plans may exist as mirrored versions; 3-All images used are for illustrative purposes only. 4-Unless stated otherwise, all fittings and interior decorative items shown are for illustrative purposes only. 5-The developer reserves the right to make alterations, at its absolute discretion, without any liability whatsoever up to the final 'as built' status.

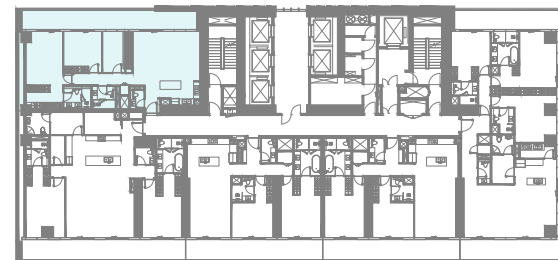
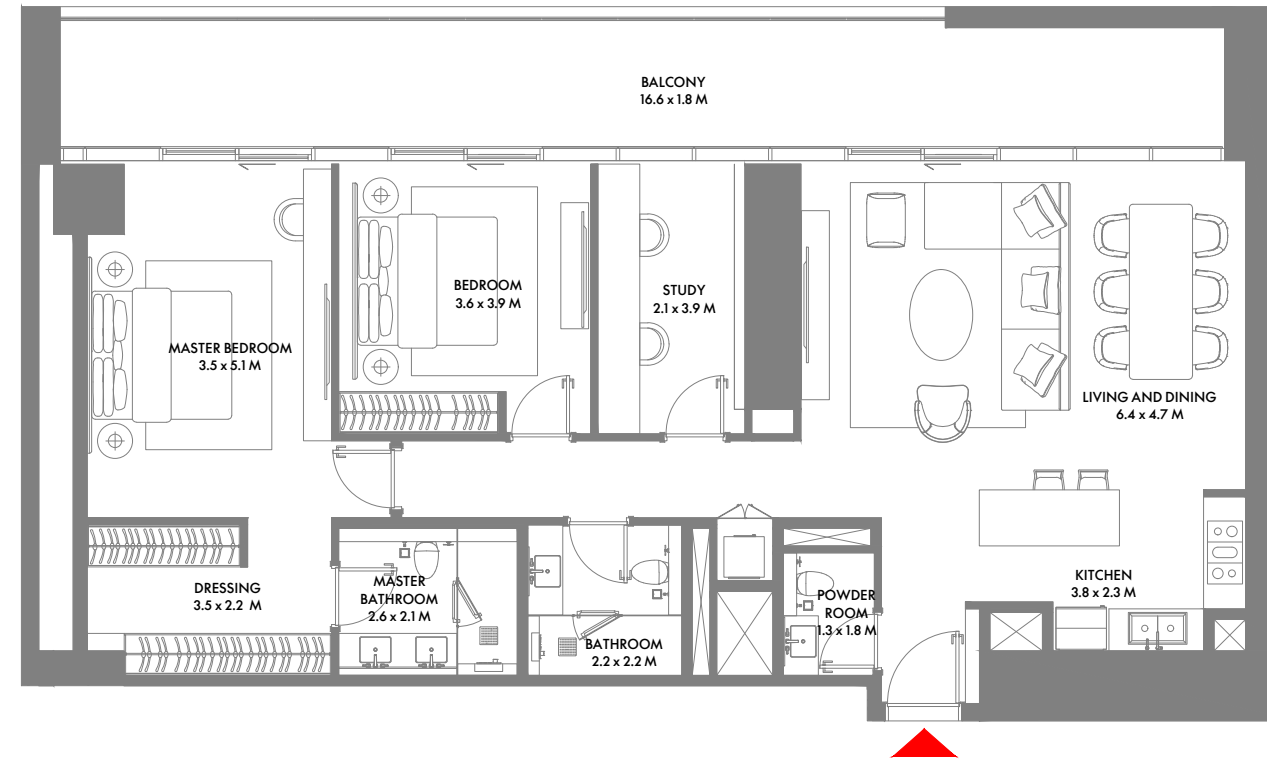


9TH, 14TH TO 21ST & 23RD TO 27TH FLOOR

2 Bedroom A

Unit Area: 122.02 Sqm (1,314 Sqft) | Balcony Area: 25.92 Sqm (279 Sqft) | Total Area: 147.94 Sqm (1,593 Sqft)

1-Measurements are indicative 'finish to finish' in Metric & Imperial excluding construction tolerance. 2-Plot/unit dimensions may vary from brochure, and unit types/plans may exist as mirrored versions; 3-All images used are for illustrative purposes only. 4-Unless stated otherwise, all fittings and interior decorative items shown are for illustrative purposes only. 5-The developer reserves the right to make alterations, at its absolute discretion, without any liability whatsoever up to the final 'as built' status.

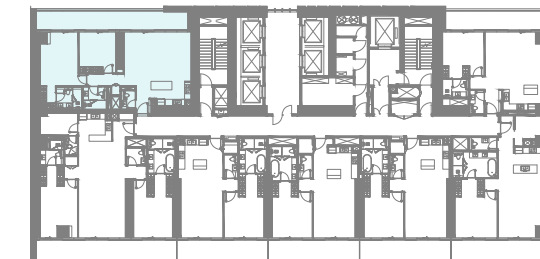
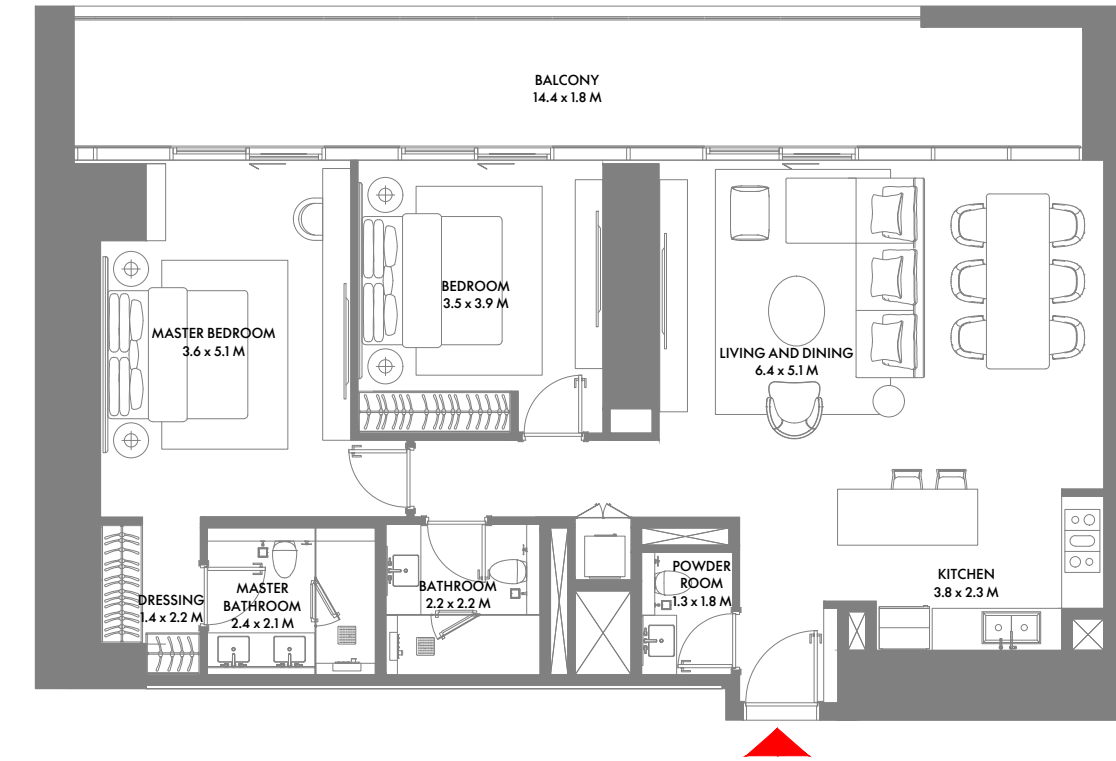


8TH & 14TH FLOOR

2 Bedroom B

Unit Area: 129.69 Sqm (1,396 Sqft) | Balcony Area: 32.79 Sqm (353 Sqft) | Total Area: 162.48 Sqm (1,749 Sqft)

1-Measurements are indicative 'finish to finish' in Metric & Imperial excluding construction tolerance. 2-Plot/unit dimensions may vary from brochure, and unit types/plans may exist as mirrored versions; 3-All images used are for illustrative purposes only. 4-Unless stated otherwise, all fittings and interior decorative items shown are for illustrative purposes only. 5-The developer reserves the right to make alterations, at its absolute discretion, without any liability whatsoever up to the final 'as built' status.

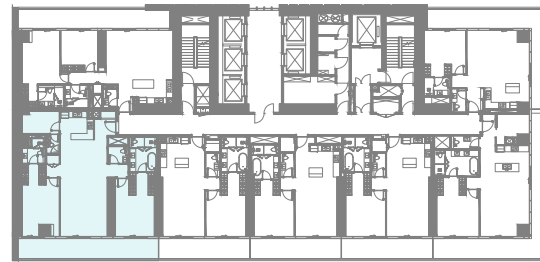
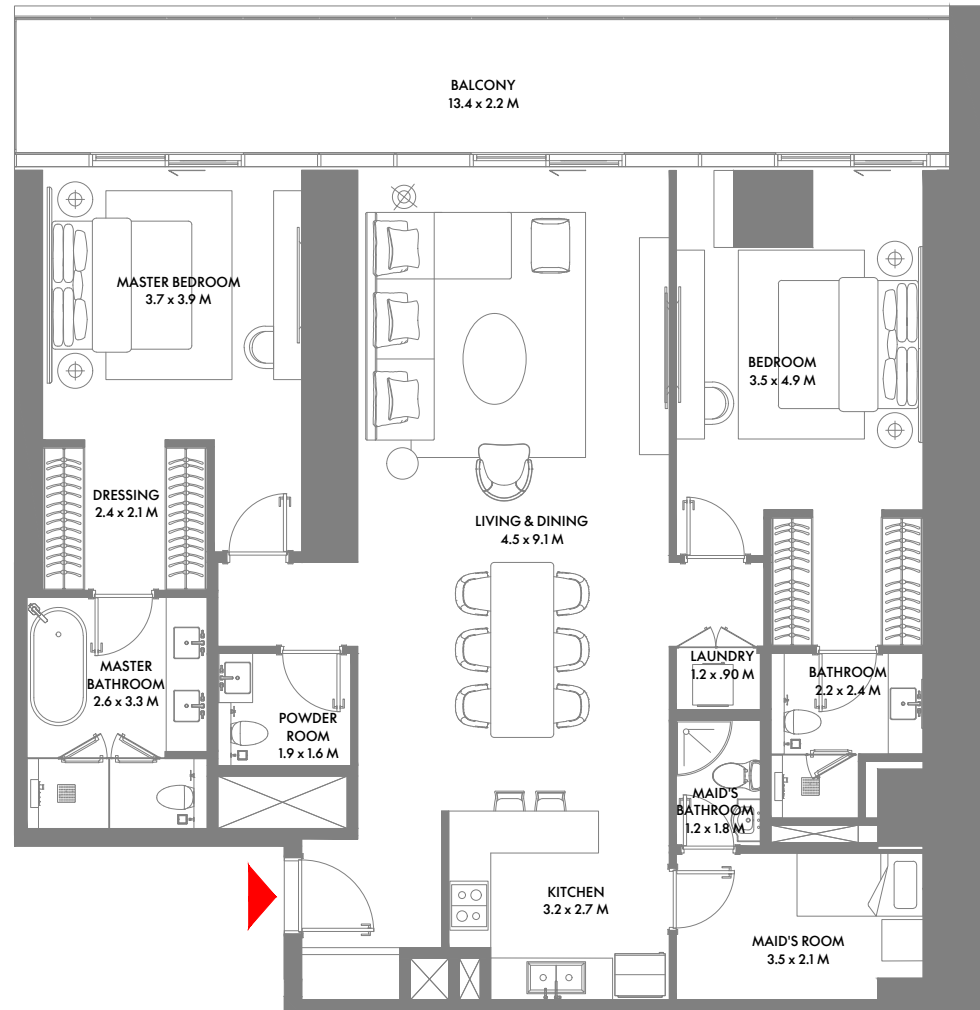


5TH TO 7TH & 15TH TO 21ST FLOOR

2 Bedroom C

Unit Area: 123.21 Sqm (1,327 Sqft) | Balcony Area: 31.68 Sqm (341 Sqft) | Total Area: 154.89 Sqm (1,668 Sqft)

1-Measurements are indicative 'finish to finish' in Metric & Imperial excluding construction tolerance. 2-Plot/unit dimensions may vary from brochure, and unit types/plans may exist as mirrored versions; 3-All images used are for illustrative purposes only. 4-Unless stated otherwise, all fittings and interior decorative items shown are for illustrative purposes only. 5-The developer reserves the right to make alterations, at its absolute discretion, without any liability whatsoever up to the final 'as built' status.

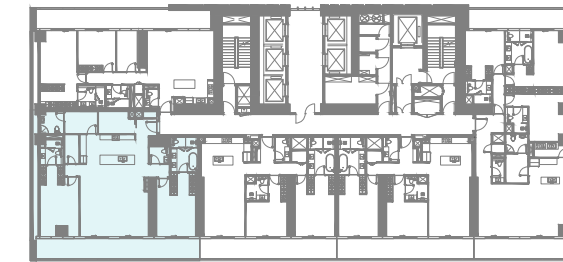
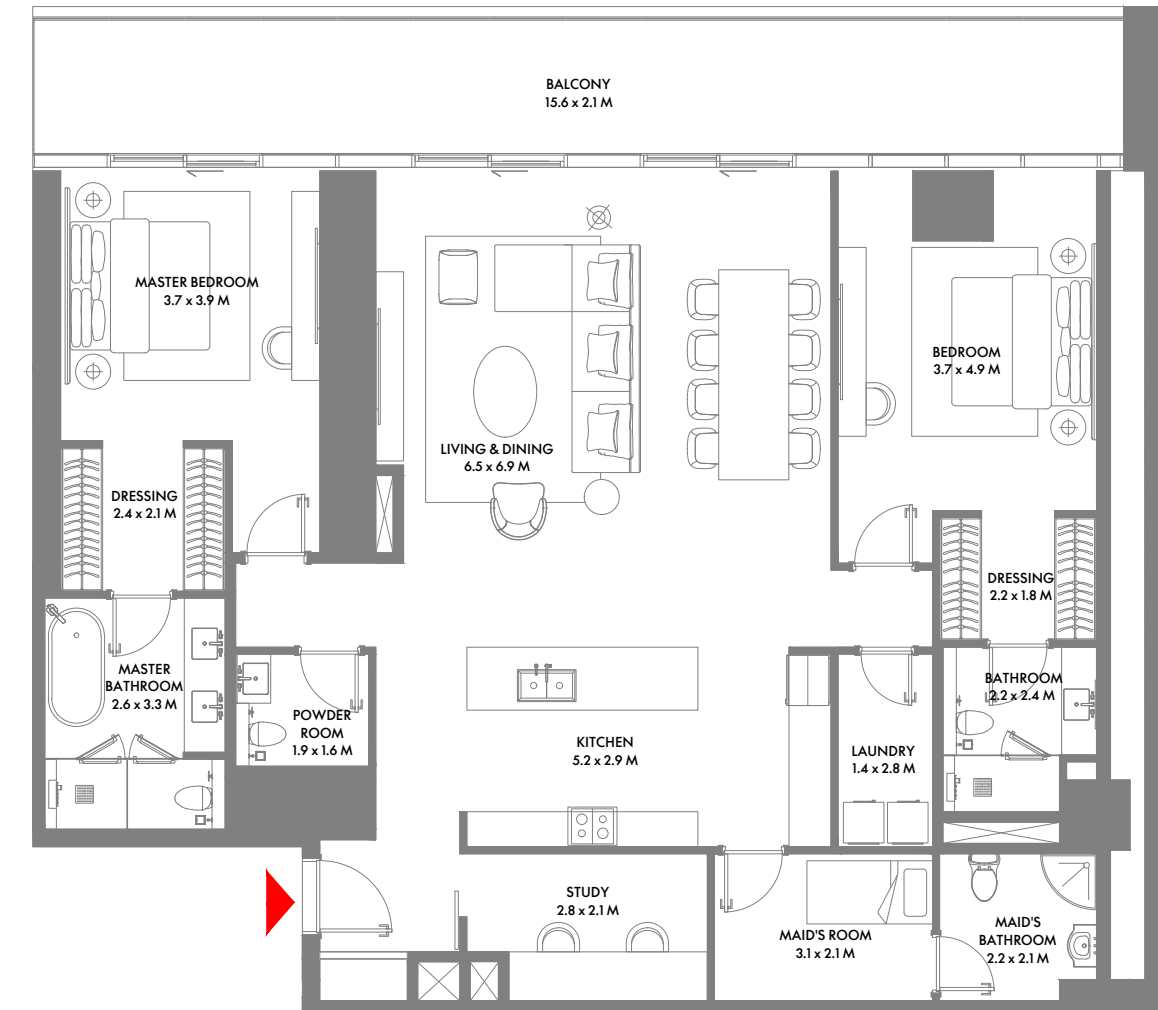


5TH TO 7TH & 15TH TO 20TH FLOOR

2 Bedroom D

Unit Area: 167.60 Sqm (1,805 Sqft) | Balcony Area: 29.76 Sqm (320 Sqft) | Total Area: 197.36 Sqm (2,125 Sqft)

1-Measurements are indicative 'finish to finish' in Metric & Imperial excluding construction tolerance. 2-Plot/unit dimensions may vary from brochure, and unit types/plans may exist as mirrored versions; 3-All images used are for illustrative purposes only. 4-Unless stated otherwise, all fittings and interior decorative items shown are for illustrative purposes only. 5-The developer reserves the right to make alterations, at its absolute discretion, without any liability whatsoever up to the final 'as built' status.

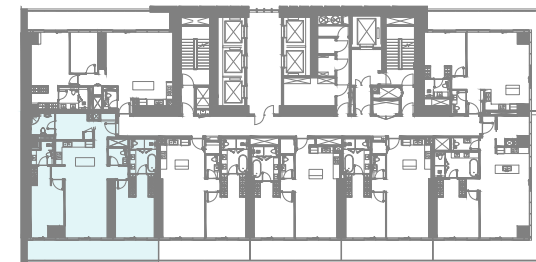
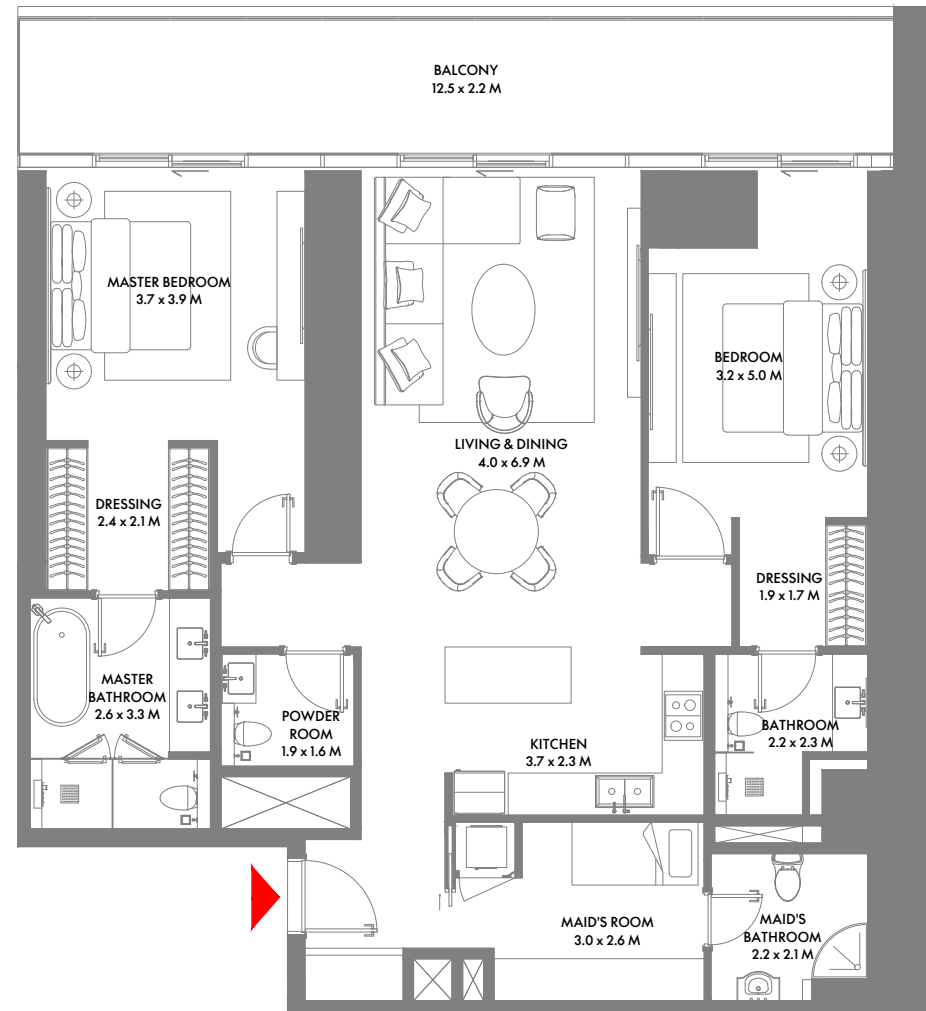


8TH & 14TH FLOOR

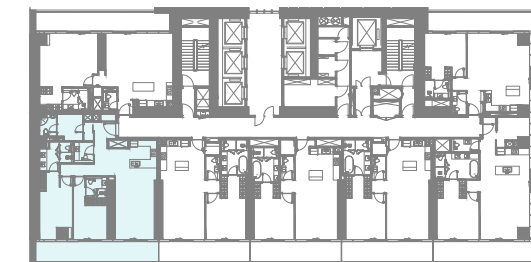
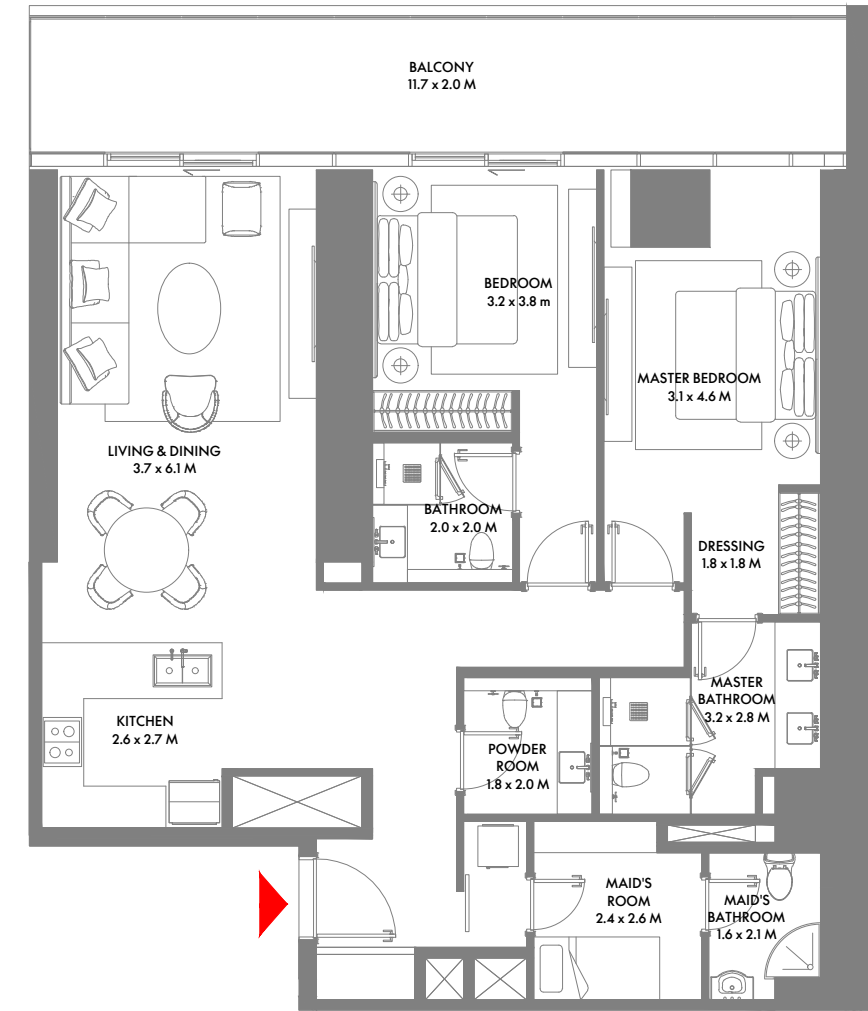
2 Bedroom E

Unit Area: 177.02 Sqm (1,906 Sqft) | Balcony Area: 31.39 Sqm (338 Sqft) | Total Area: 208.41 Sqm (2,244 Sqft)

1-Measurements are indicative 'finish to finish' in Metric & Imperial excluding construction tolerance. 2-Plot/unit dimensions may vary from brochure, and unit types/plans may exist as mirrored versions; 3-All images used are for illustrative purposes only. 4-Unless stated otherwise, all fittings and interior decorative items shown are for illustrative purposes only. 5-The developer reserves the right to make alterations, at its absolute discretion, without any liability whatsoever up to the final 'as built' status.



4TH FLOOR



3RD & 22ND FLOOR

2 Bedroom F

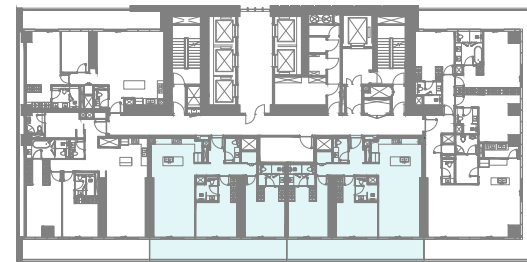
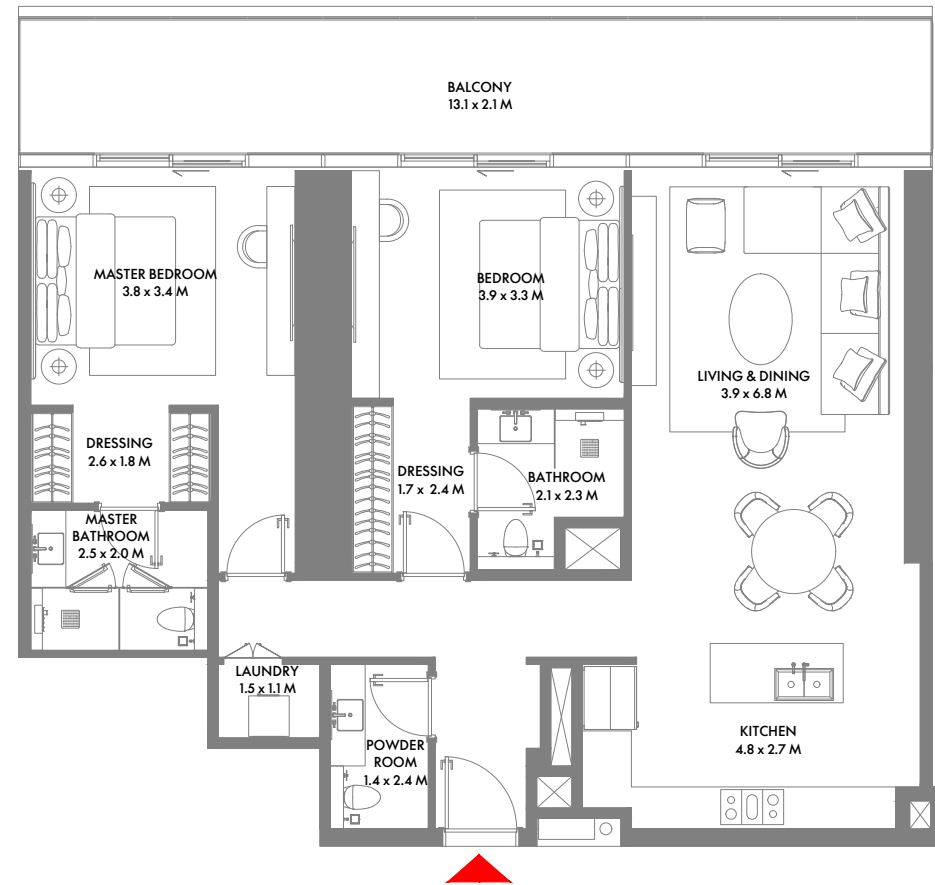
Unit Area: 136.05 Sqm (1,465 Sqft) | Balcony Area: 24.65 Sqm (265 Sqft) | Total Area: 160.70 Sqm (1,730 Sqft)

1-Measurements are indicative 'finish to finish' in Metric & Imperial excluding construction tolerance. 2-Plot/unit dimensions may vary from brochure, and unit types/plans may exist as mirrored versions; 3-All images used are for illustrative purposes only. 4-Unless stated otherwise, all fittings and interior decorative items shown are for illustrative purposes only. 5-The developer reserves the right to make alterations, at its absolute discretion, without any liability whatsoever up to the final 'as built' status.

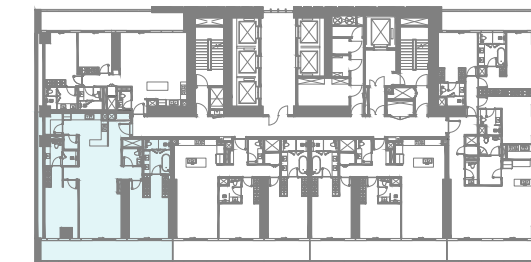
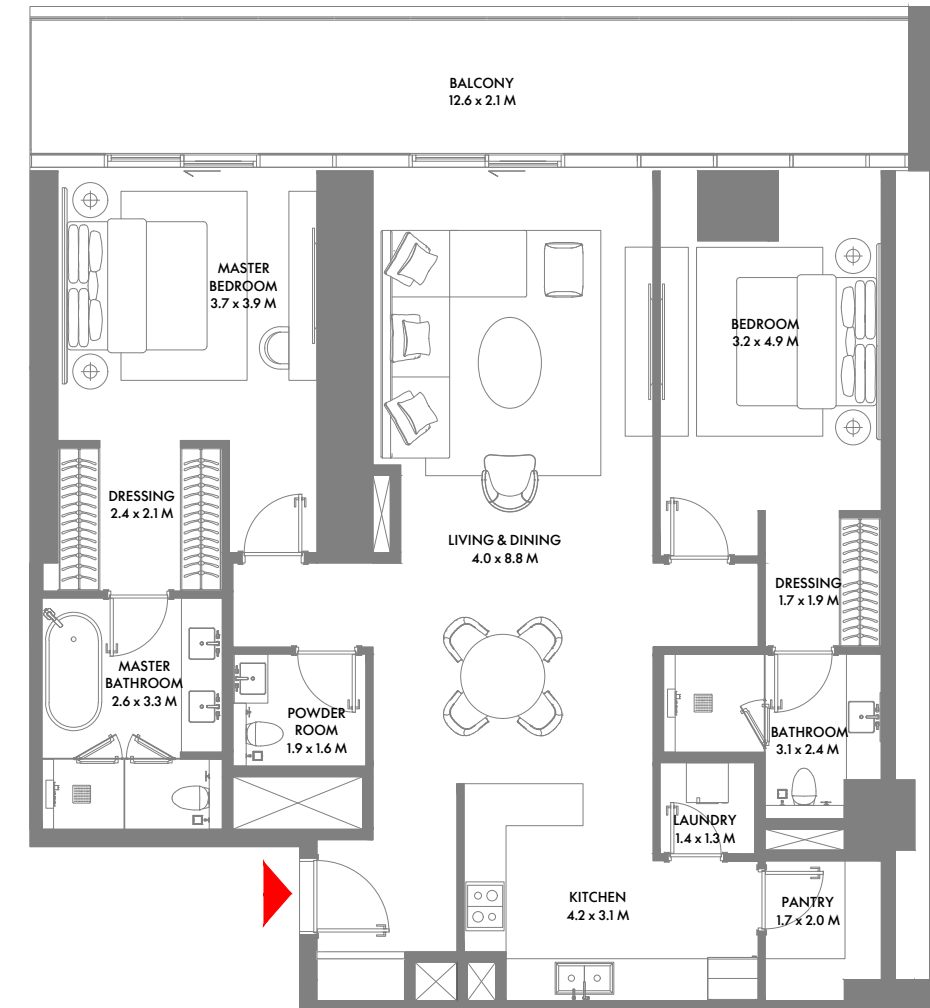
2 Bedroom G

Unit Area: 130.17 Sqm (1,402 Sqft) | Balcony Area: 23.89 Sqm (257 Sqft) | Total Area: 154.06 Sqm (1,659 Sqft)

1-Measurements are indicative 'finish to finish' in Metric & Imperial excluding construction tolerance. 2-Plot/unit dimensions may vary from brochure, and unit types/plans may exist as mirrored versions; 3-All images used are for illustrative purposes only. 4-Unless stated otherwise, all fittings and interior decorative items shown are for illustrative purposes only. 5-The developer reserves the right to make alterations, at its absolute discretion, without any liability whatsoever up to the final 'as built' status.



10TH & 22ND FLOOR



21ST FLOOR

2 Bedroom H

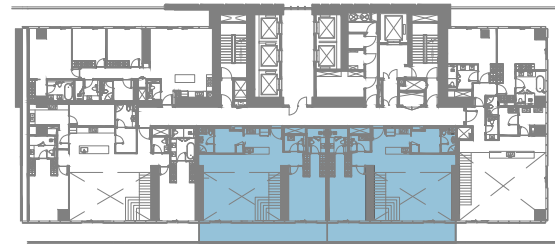
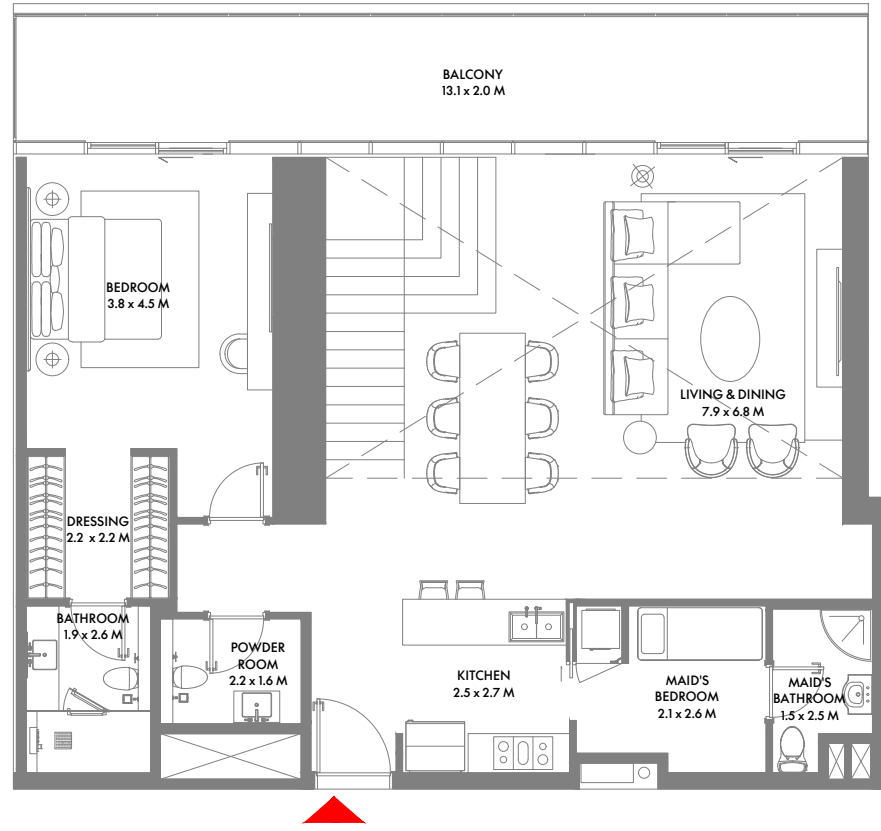
Unit Area: 118.34 Sqm (1,274 Sqft) | Balcony Area: 25.92 Sqm (279 Sqft) | Total Area: 144.26 Sqm (1,553 Sqft)

1-Measurements are indicative 'finish to finish' in Metric & Imperial excluding construction tolerance. 2-Plot/unit dimensions may vary from brochure, and unit types/plans may exist as mirrored versions; 3-All images used are for illustrative purposes only. 4-Unless stated otherwise, all fittings and interior decorative items shown are for illustrative purposes only. 5-The developer reserves the right to make alterations, at its absolute discretion, without any liability whatsoever up to the final 'as built' status.

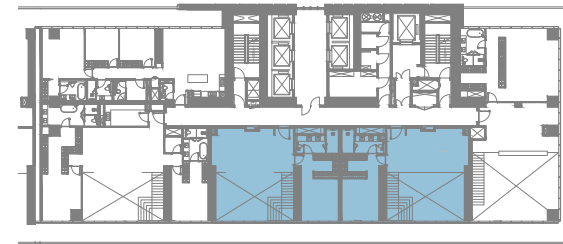
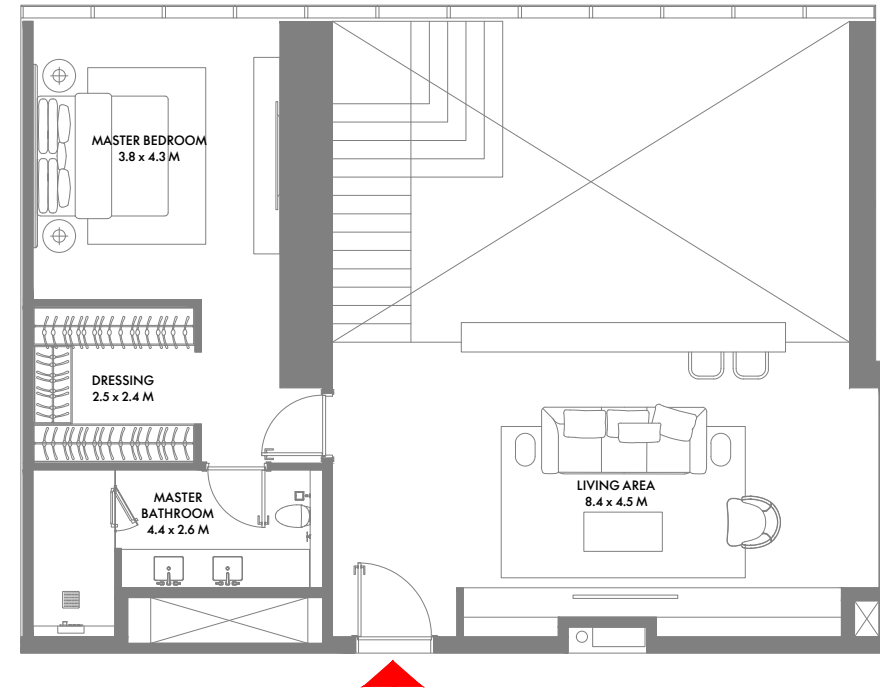
2 Bedroom I

Unit Area: 135.96 Sqm (1,464 Sqft) | Balcony Area: 24.73 Sqm (266 Sqft) | Total Area: 160.69 Sqm (1,730 Sqft)

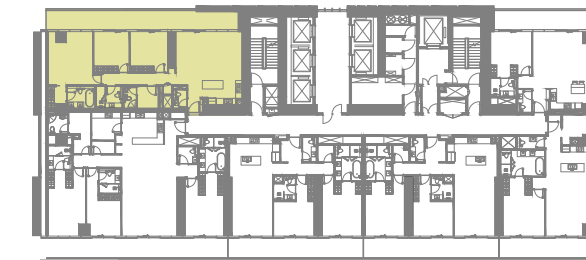
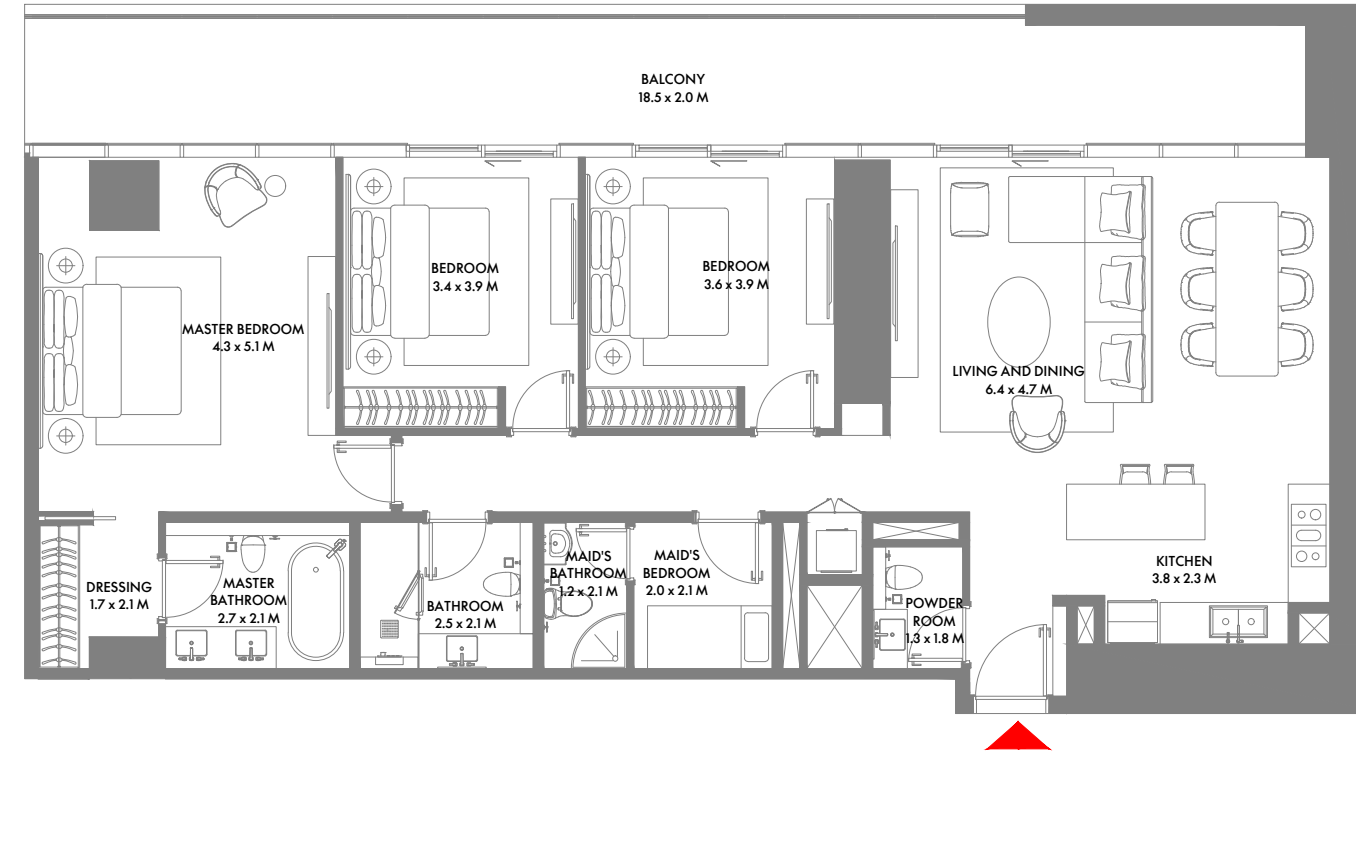
1-Measurements are indicative 'finish to finish' in Metric & Imperial excluding construction tolerance. 2-Plot/unit dimensions may vary from brochure, and unit types/plans may exist as mirrored versions; 3-All images used are for illustrative purposes only. 4-Unless stated otherwise, all fittings and interior decorative items shown are for illustrative purposes only. 5-The developer reserves the right to make alterations, at its absolute discretion, without any liability whatsoever up to the final 'as built' status.



11TH FLOOR



12TH FLOOR



9TH TO 12TH FLOOR

2 Bedroom Duplex A

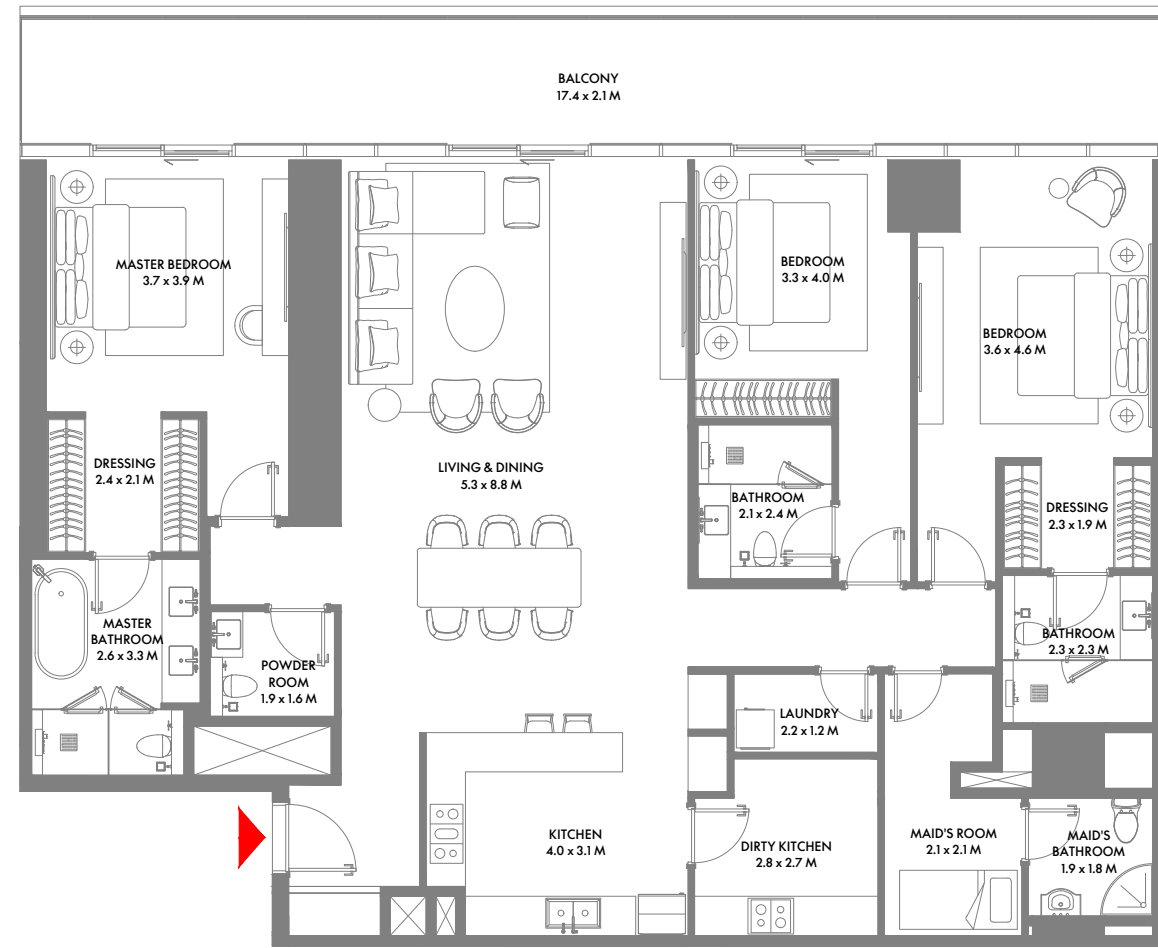
Unit Area: 211.06 Sqm (2,272 Sqft) | Balcony Area: 25.70 Sqm (277 Sqft) | Total Area: 236.76 Sqm (2,549 Sqft)

1-Measurements are indicative 'finish to finish' in Metric & Imperial excluding construction tolerance. 2-Plot/unit dimensions may vary from brochure, and unit types/plans may exist as mirrored versions; 3-All images used are for illustrative purposes only. 4-Unless stated otherwise, all fittings and interior decorative items shown are for illustrative purposes only. 5-The developer reserves the right to make alterations, at its absolute discretion, without any liability whatsoever up to the final 'as built' status.

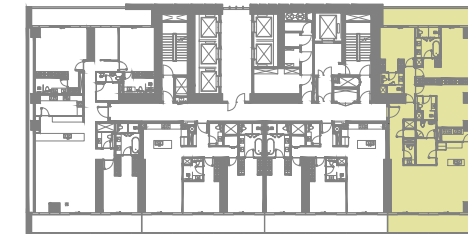
3 Bedroom A

Unit Area: 143.52 Sqm (1,545 Sqft) | Balcony Area: 35.99 Sqm (388 Sqft) | Total Area: 179.51 Sqm (1,933 Sqft)

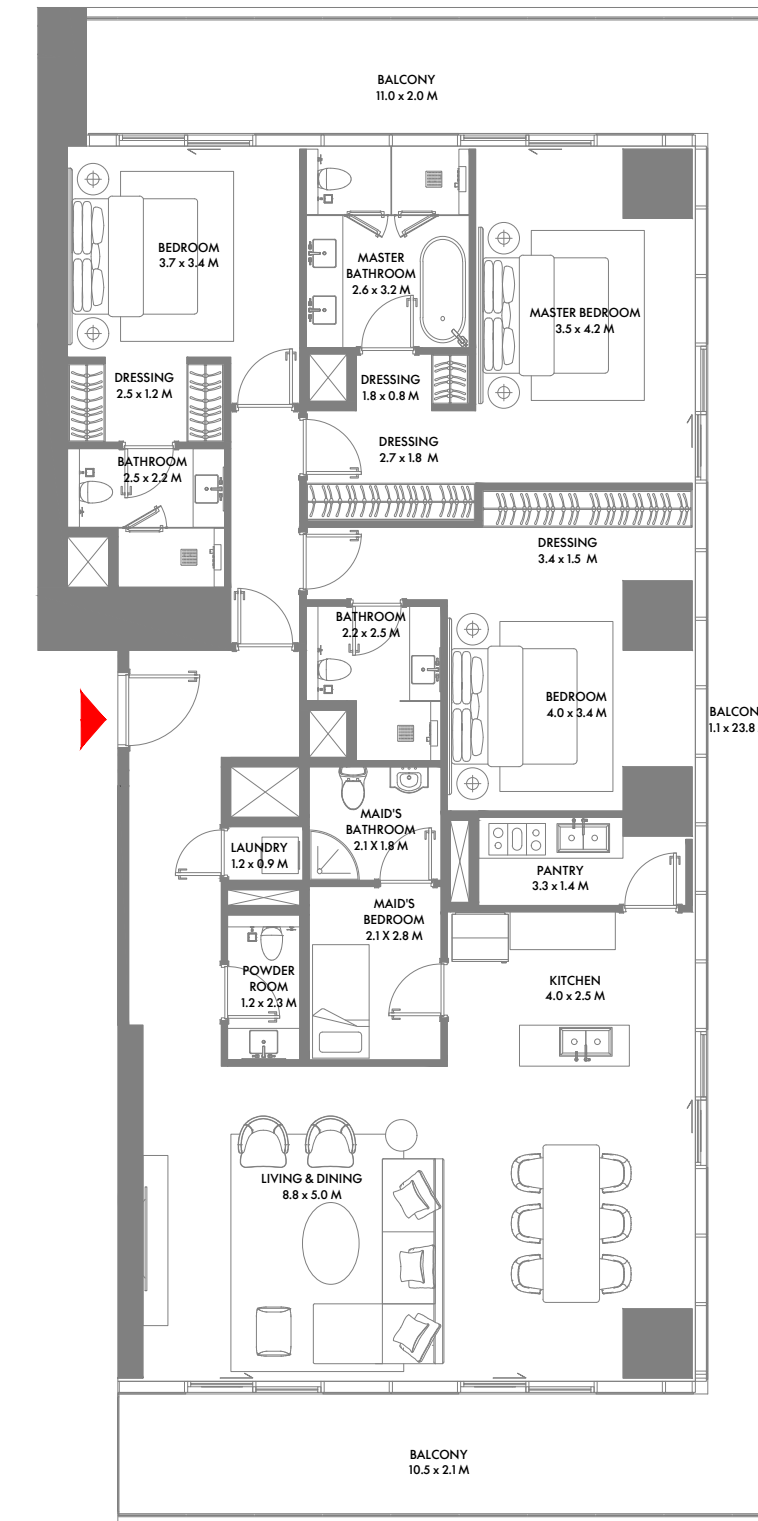
1-Measurements are indicative 'finish to finish' in Metric & Imperial excluding construction tolerance. 2-Plot/unit dimensions may vary from brochure, and unit types/plans may exist as mirrored versions; 3-All images used are for illustrative purposes only. 4-Unless stated otherwise, all fittings and interior decorative items shown are for illustrative purposes only. 5-The developer reserves the right to make alterations, at its absolute discretion, without any liability whatsoever up to the final 'as built' status.



9TH & 10TH FLOOR



14TH TO 27TH FLOOR



3 Bedroom B

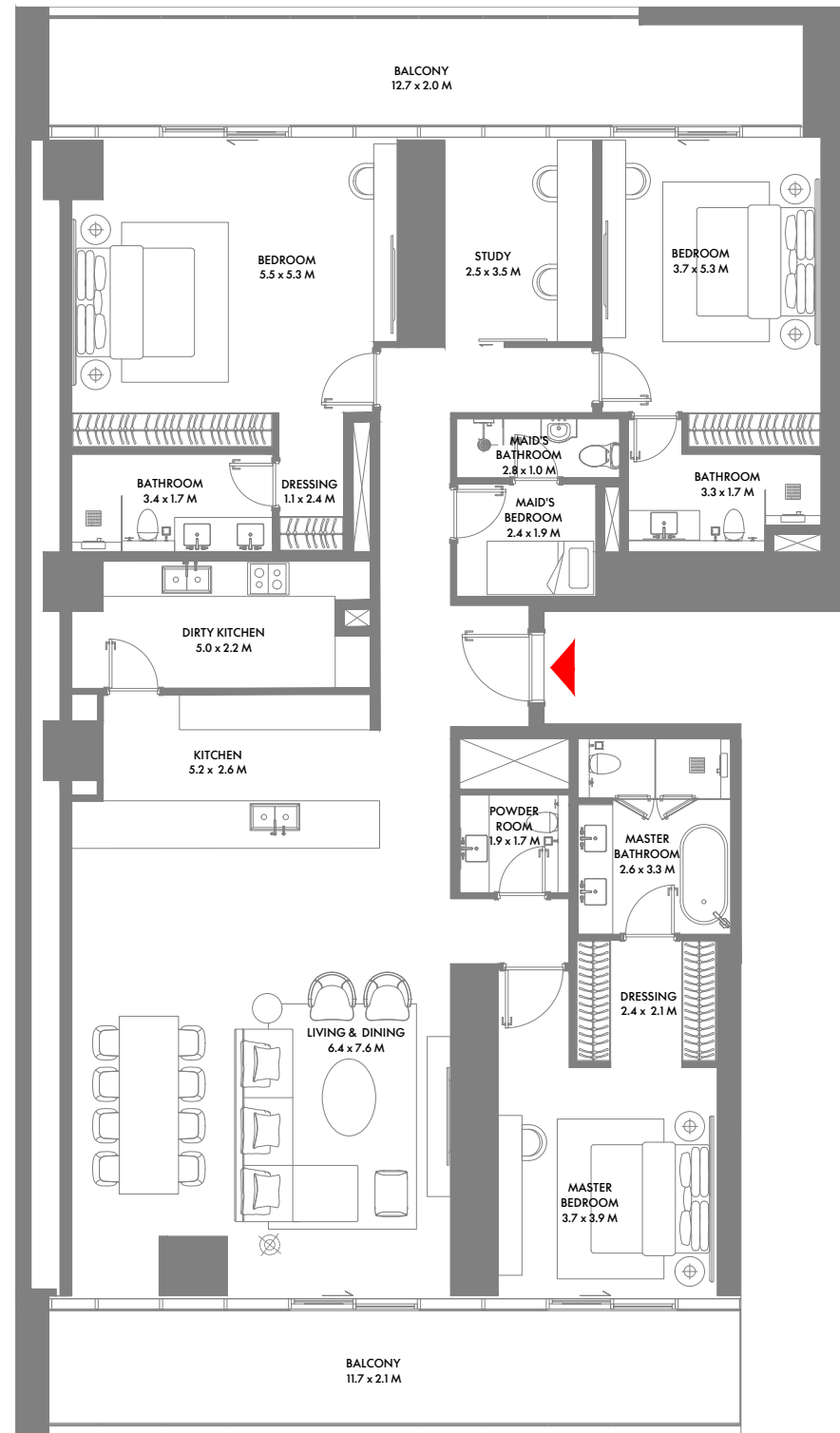
Unit Area: 198.71 Sqm (2,139 Sqft) | Balcony Area: 34.53 Sqm (372 Sqft) | Total Area: 233.24 Sqm (2,511 Sqft)

1-Measurements are indicative 'finish to finish' in Metric & Imperial excluding construction tolerance. 2-Plot/unit dimensions may vary from brochure, and unit types/plans may exist as mirrored versions; 3-All images used are for illustrative purposes only. 4-Unless stated otherwise, all fittings and interior decorative items shown are for illustrative purposes only. 5-The developer reserves the right to make alterations, at its absolute discretion, without any liability whatsoever up to the final 'as built' status.

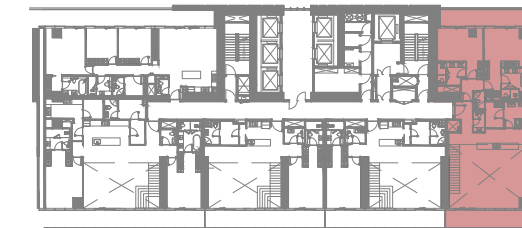
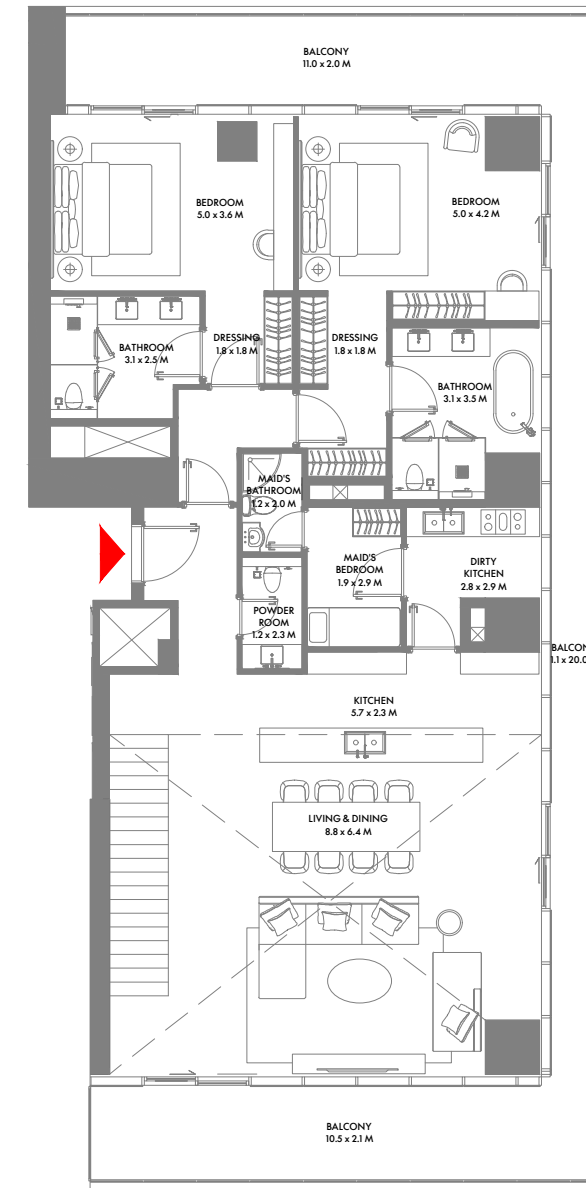
3 Bedroom C

Unit Area: 190.50 Sqm (2,051 Sqft) | Balcony Area: 61.38 Sqm (661 Sqft) | Total Area: 251.88 Sqm (2,712 Sqft)

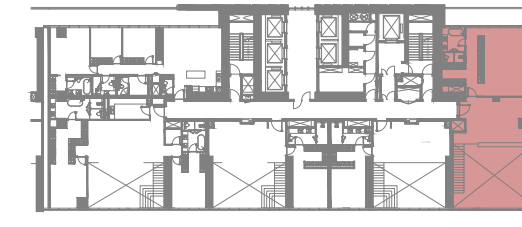
1-Measurements are indicative 'finish to finish' in Metric & Imperial excluding construction tolerance. 2-Plot/unit dimensions may vary from brochure, and unit types/plans may exist as mirrored versions; 3-All images used are for illustrative purposes only. 4-Unless stated otherwise, all fittings and interior decorative items shown are for illustrative purposes only. 5-The developer reserves the right to make alterations, at its absolute discretion, without any liability whatsoever up to the final 'as built' status.



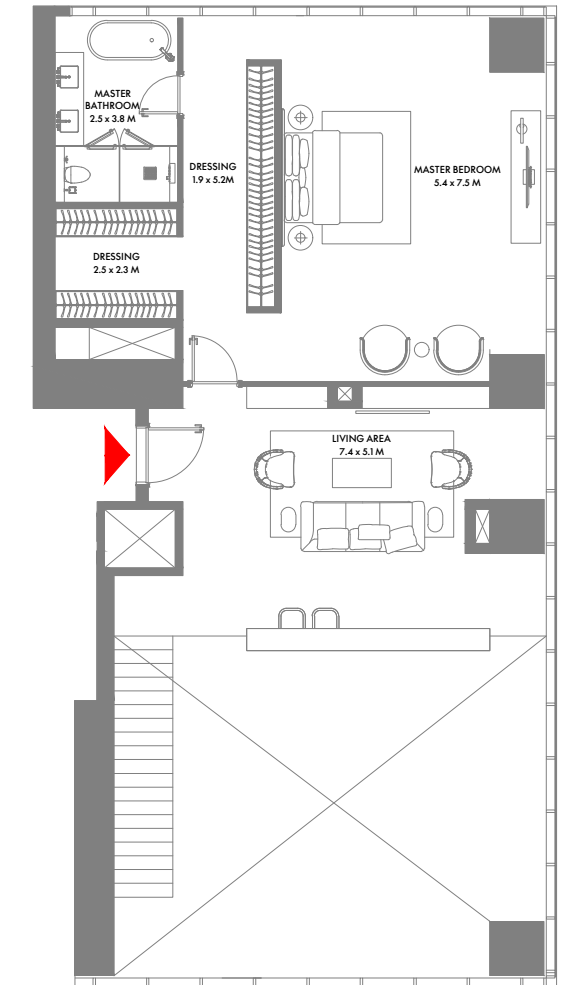
23RD TO 27TH FLOOR



11TH FLOOR



12TH FLOOR



3 Bedroom D

Unit Area: 226.73 Sqm (2,441 Sqft) | Balcony Area: 48.14 Sqm (518 Sqft) | Total Area: 274.87 Sqm (2,959 Sqft)

1-Measurements are indicative 'finish to finish' in Metric & Imperial excluding construction tolerance. 2-Plot/unit dimensions may vary from brochure, and unit types/plans may exist as mirrored versions; 3-All images used are for illustrative purposes only. 4-Unless stated otherwise, all fittings and interior decorative items shown are for illustrative purposes only. 5-The developer reserves the right to make alterations, at its absolute discretion, without any liability whatsoever up to the final 'as built' status.

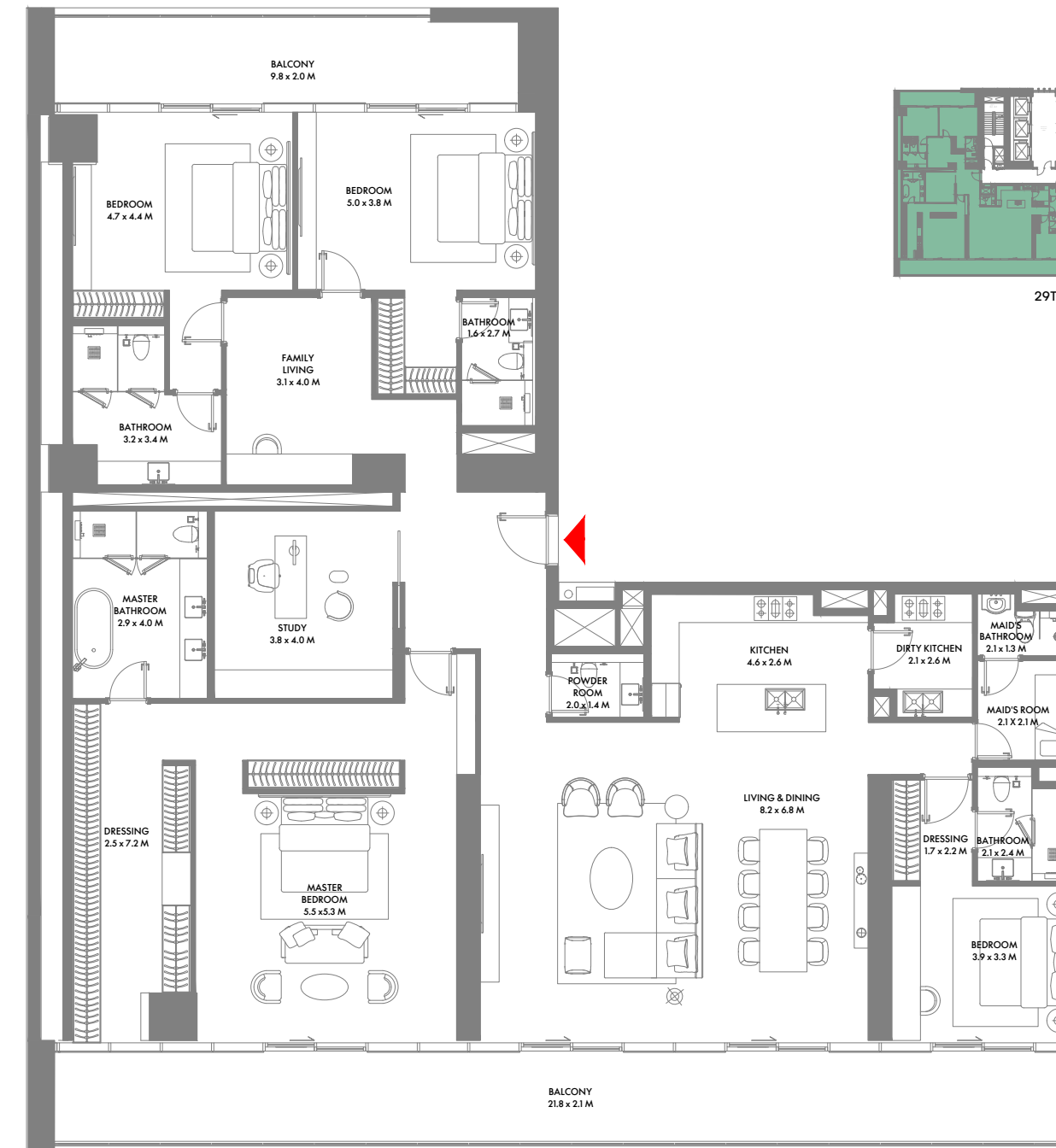
3 Bedroom Duplex A

Unit Area: 314.03 Sqm (3,381 Sqft) | Balcony Area: 61.15 Sqm (658 Sqft) | Total Area: 375.18 Sqm (4,039 Sqft)

1-Measurements are indicative 'finish to finish' in Metric & Imperial excluding construction tolerance. 2-Plot/unit dimensions may vary from brochure, and unit types/plans may exist as mirrored versions; 3-All images used are for illustrative purposes only. 4-Unless stated otherwise, all fittings and interior decorative items shown are for illustrative purposes only. 5-The developer reserves the right to make alterations, at its absolute discretion, without any liability whatsoever up to the final 'as built' status.



29TH TO 31ST & 33RD TO 36TH FLOOR



29TH FLOOR

4 Bedroom A

Unit Area: 316.85 Sqm (3,411 Sqft) | Balcony Area: 87.30 Sqm (940 Sqft) | Total Area: 404.15 Sqm (4,351 Sqft)

1-Measurements are indicative 'finish to finish' in Metric & Imperial excluding construction tolerance. 2-Plot/unit dimensions may vary from brochure, and unit types/plans may exist as mirrored versions; 3-All images used are for illustrative purposes only. 4-Unless stated otherwise, all fittings and interior decorative items shown are for illustrative purposes only. 5-The developer reserves the right to make alterations, at its absolute discretion, without any liability whatsoever up to the final 'as built' status.

4 Bedroom B

Unit Area: 304.12 Sqm (3,274 Sqft) | Balcony Area: 63.05 Sqm (679 Sqft) | Total Area: 367.17 Sqm (3,953 Sqft)

1-Measurements are indicative 'finish to finish' in Metric & Imperial excluding construction tolerance. 2-Plot/unit dimensions may vary from brochure, and unit types/plans may exist as mirrored versions; 3-All images used are for illustrative purposes only. 4-Unless stated otherwise, all fittings and interior decorative items shown are for illustrative purposes only. 5-The developer reserves the right to make alterations, at its absolute discretion, without any liability whatsoever up to the final 'as built' status.



4 Bedroom C

Unit Area: 294.57 Sqm (3,171 Sqft) | Balcony Area: 61.78 Sqm (665 Sqft) | Total Area: 356.35 Sqm (3,836 Sqft)

1-Measurements are indicative 'finish to finish' in Metric & Imperial excluding construction tolerance. 2-Plot/unit dimensions may vary from brochure, and unit types/plans may exist as mirrored versions; 3-All images used are for illustrative purposes only. 4-Unless stated otherwise, all fittings and interior decorative items shown are for illustrative purposes only. 5-The developer reserves the right to make alterations, at its absolute discretion, without any liability whatsoever up to the final 'as built' status.

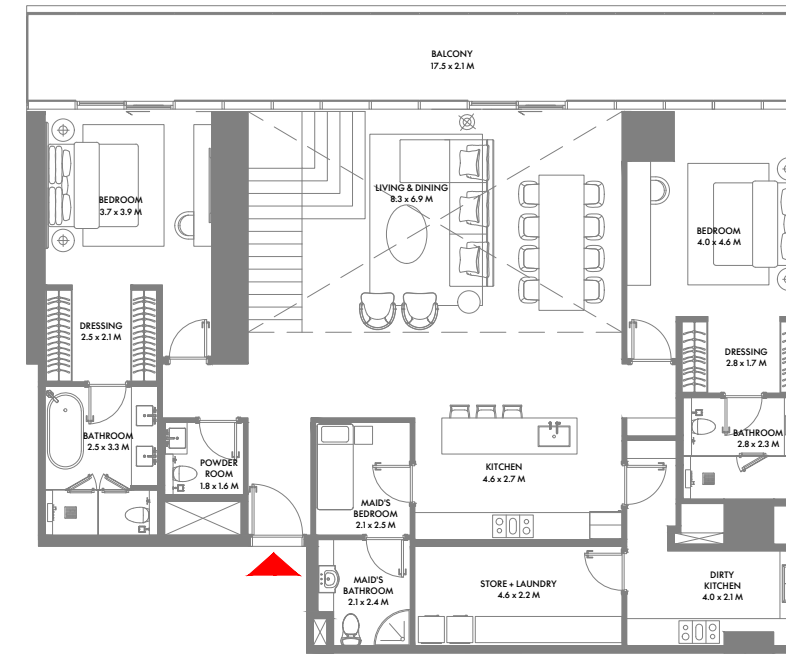
4 Bedroom D

Unit Area: 259.76 Sqm (2,797 Sqft) | Balcony Area: 54.52 Sqm (586 Sqft) | Total Area: 314.28 Sqm (3,383 Sqft)

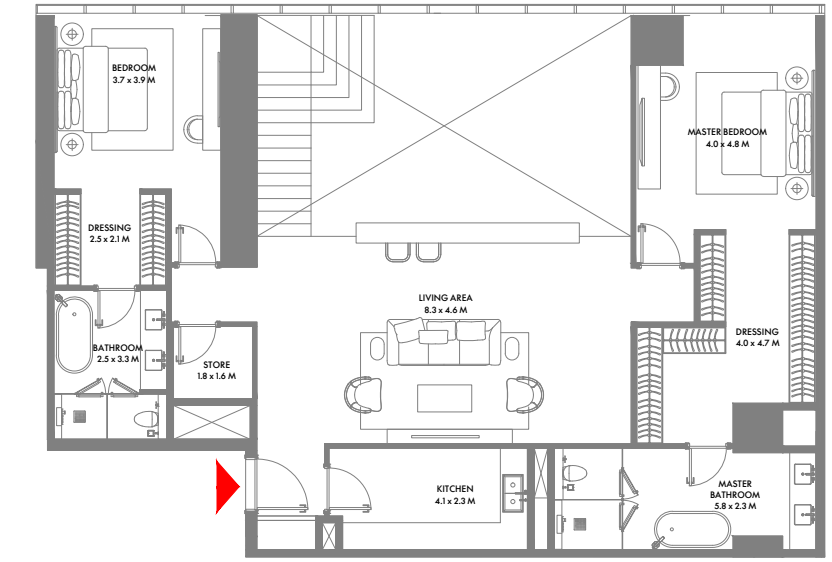
1-Measurements are indicative 'finish to finish' in Metric & Imperial excluding construction tolerance. 2-Plot/unit dimensions may vary from brochure, and unit types/plans may exist as mirrored versions; 3-All images used are for illustrative purposes only. 4-Unless stated otherwise, all fittings and interior decorative items shown are for illustrative purposes only. 5-The developer reserves the right to make alterations, at its absolute discretion, without any liability whatsoever up to the final 'as built' status.



32ND FLOOR



11TH FLOOR



12TH FLOOR

4 Bedroom E

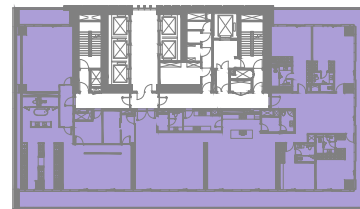
Unit Area: 305.48 Sqm (3,289 Sqft) | Balcony Area: 87.30 Sqm (939 Sqft) | Total Area: 392.78 Sqm (4,228 Sqft)

1-Measurements are indicative 'finish to finish' in Metric & Imperial excluding construction tolerance. 2-Plot/unit dimensions may vary from brochure, and unit types/plans may exist as mirrored versions; 3-All images used are for illustrative purposes only. 4-Unless stated otherwise, all fittings and interior decorative items shown are for illustrative purposes only. 5-The developer reserves the right to make alterations, at its absolute discretion, without any liability whatsoever up to the final 'as built' status.

4 Bedroom Duplex A

Unit Area: 349.66 Sqm (3,764 Sqft) | Balcony Area: 34.31 Sqm (370 Sqft) | Total Area: 383.97 Sqm (4,134 Sqft)

1-Measurements are indicative 'finish to finish' in Metric & Imperial excluding construction tolerance. 2-Plot/unit dimensions may vary from brochure, and unit types/plans may exist as mirrored versions; 3-All images used are for illustrative purposes only. 4-Unless stated otherwise, all fittings and interior decorative items shown are for illustrative purposes only. 5-The developer reserves the right to make alterations, at its absolute discretion, without any liability whatsoever up to the final 'as built' status.



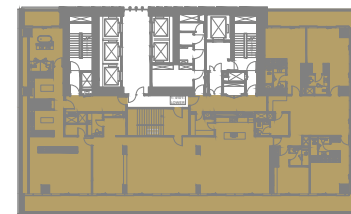
37TH TO 40TH FLOOR

PRESIDENTIAL SUITE

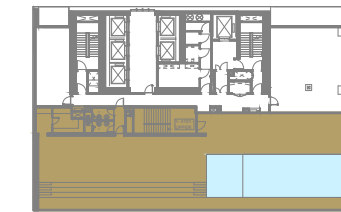
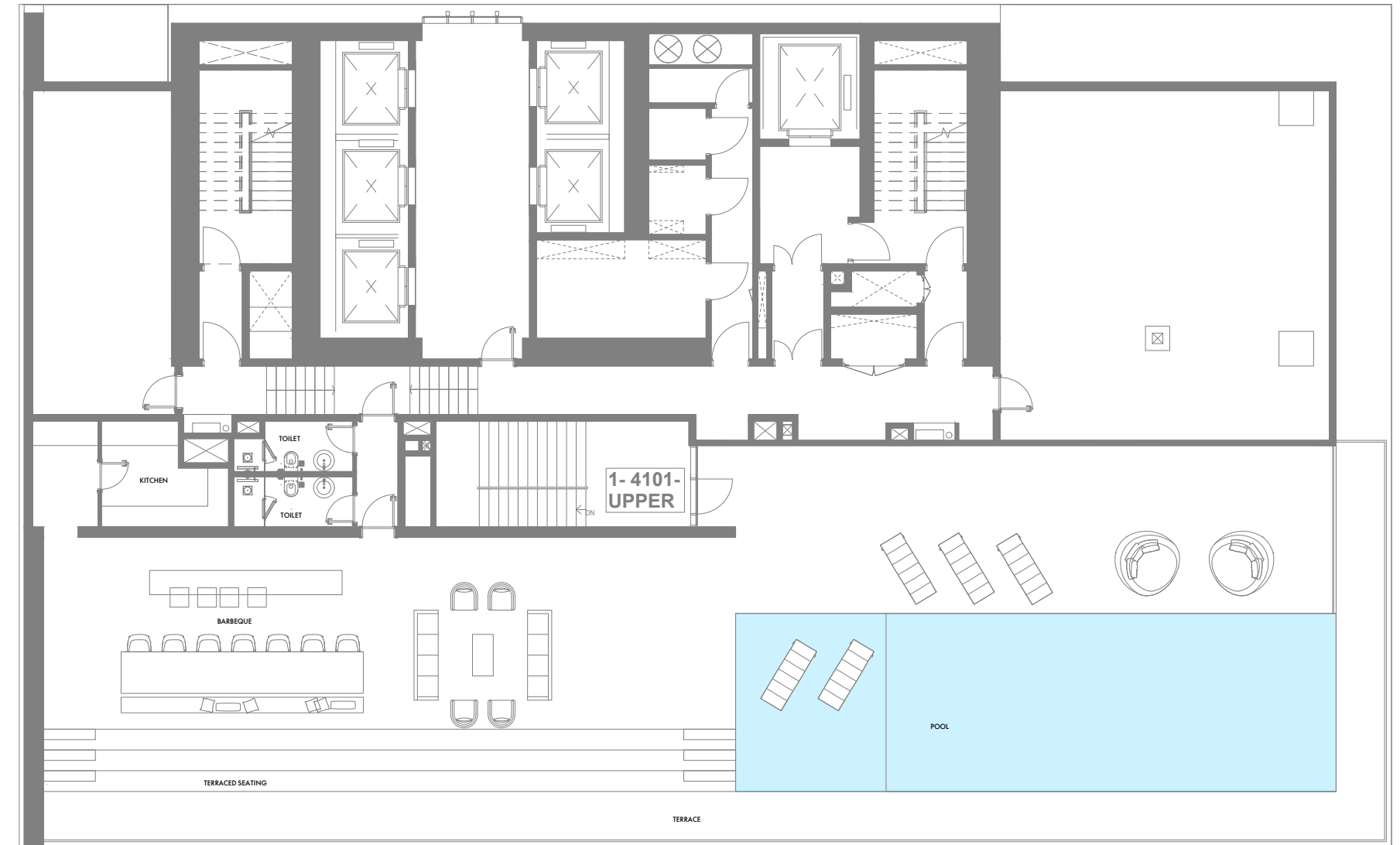
5 Bedroom Penthouse

Unit Area: 550.85 Sqm (5,930 Sqft) | Balcony Area: 136.15 Sqm (1,465 Sqft) | Total Area: 687.00 Sqm (7,395 Sqft)

1-Measurements are indicative 'finish to finish' in Metric & Imperial excluding construction tolerance. 2-Plot/unit dimensions may vary from brochure, and unit types/plans may exist as mirrored versions; 3-All images used are for illustrative purposes only. 4-Unless stated otherwise, all fittings and interior decorative items shown are for illustrative purposes only. 5-The developer reserves the right to make alterations, at its absolute discretion, without any liability whatsoever up to the final 'as built' status.



41ST FLOOR



ROOF FLOOR

Presidential Suite

Unit Area: 559.75 Sqm (6,025 Sqft) | Balcony Area: 129.39 Sqm (1,393 Sqft) | Terrace Area: 406.64 Sqm (4,377 Sqft) | Total Area: 1,095.78 Sqm (11,795 Sqft)

1-Measurements are indicative 'finish to finish' in Metric & Imperial excluding construction tolerance. 2-Plot/unit dimensions may vary from brochure, and unit types/plans may exist as mirrored versions; 3-All images used are for illustrative purposes only. 4-Unless stated otherwise, all fittings and interior decorative items shown are for illustrative purposes only. 5-The developer reserves the right to make alterations, at its absolute discretion, without any liability whatsoever up to the final 'as built' status.

ABOUT ARADA

Launched in 2017 and headquartered in the UAE, Arada was created to build spaces people connect with for healthier, happier and more meaningful lives. Arada's scope of operation covers property development, retail, education and hospitality.

Arada has so far launched four record-breaking communities in the Emirate of Sharjah, Aljada, Masaar, Anantara Sharjah Resort & Residences and Nasma Residences as well as Jouri Hills at Jumeirah Golf Estates and Armani Beach Residences at Palm Jumeirah, both in Dubai.



Aljada Discovery Center, Aljada, Sharjah | Masaar Discovery Center, Masaar, Sharjah | Arada HQ: 19th Floor, Festival Tower, Dubai Festival City, Dubai
800-ARADA (27232) | info@arada.com; arada.com; [f](#) [t](#) [x](#) [in](#) [v](#) @aradaliving

W Residences Dubai Harbour are not owned, developed or sold by Marriott International, Inc. or its affiliates ("Marriott"). Arada Developments LLC and EGR Group LLC use the W marks under a license from Marriott, which has not confirmed the accuracy of any of the statements or representations made herein.

